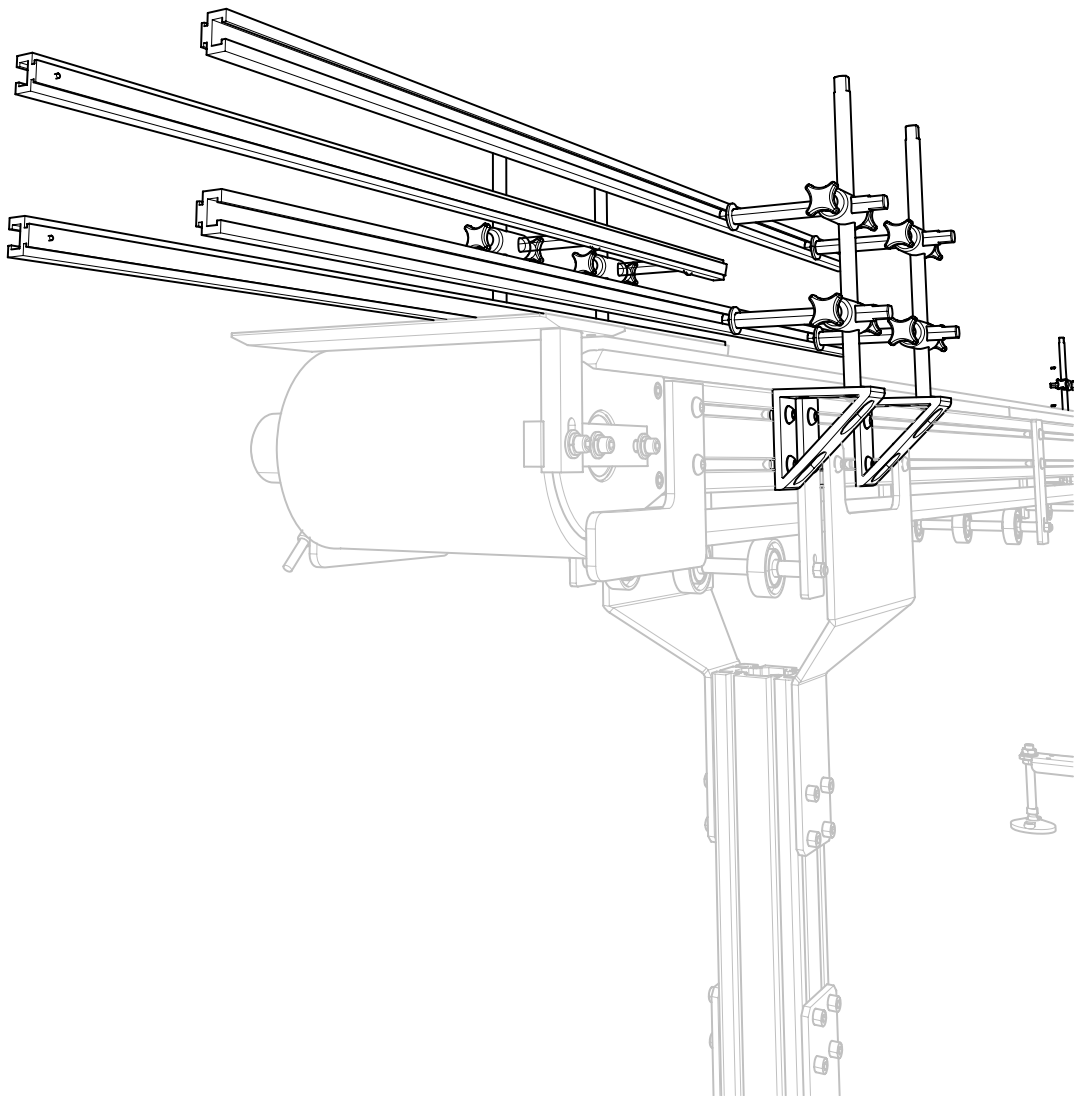
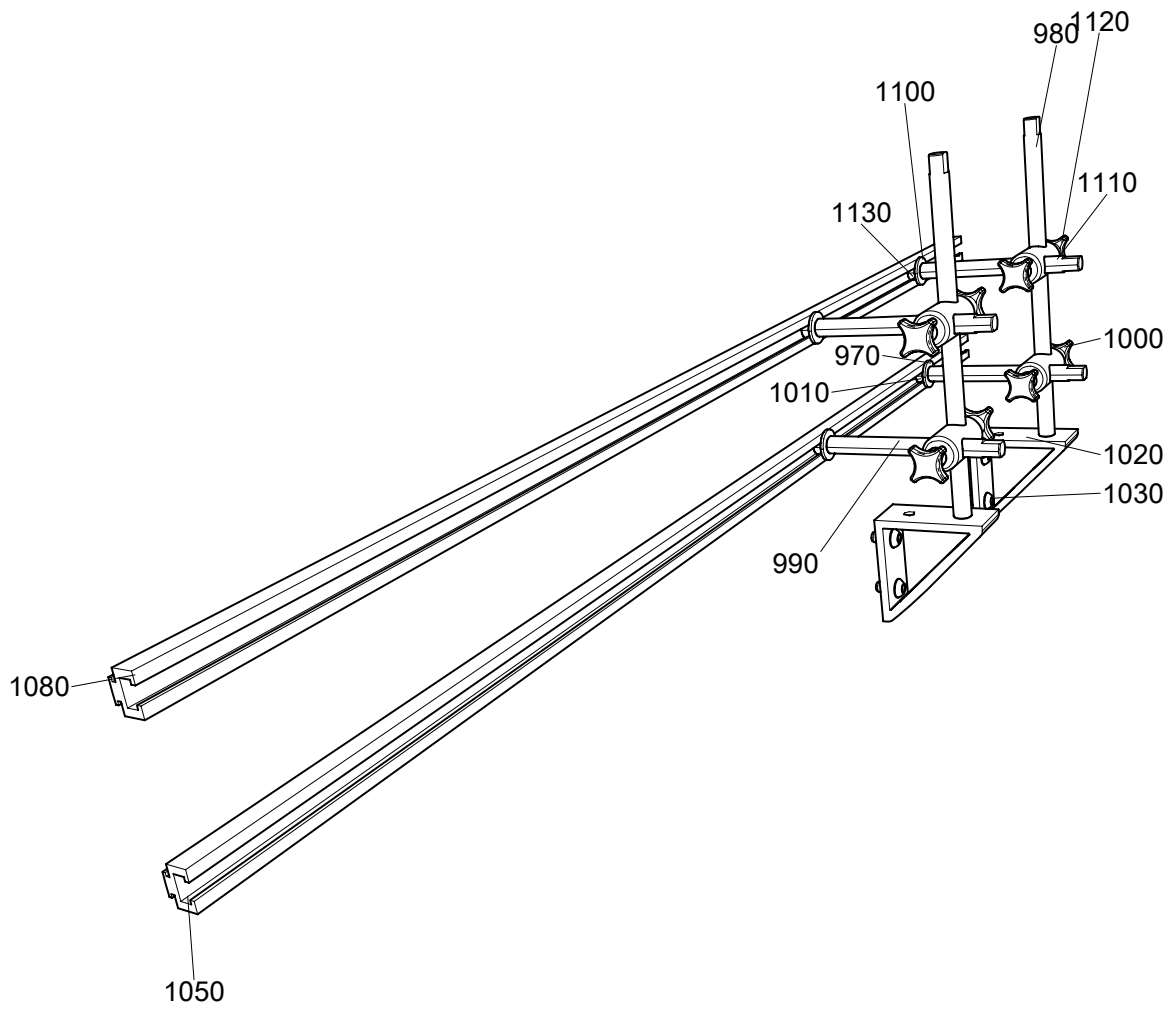


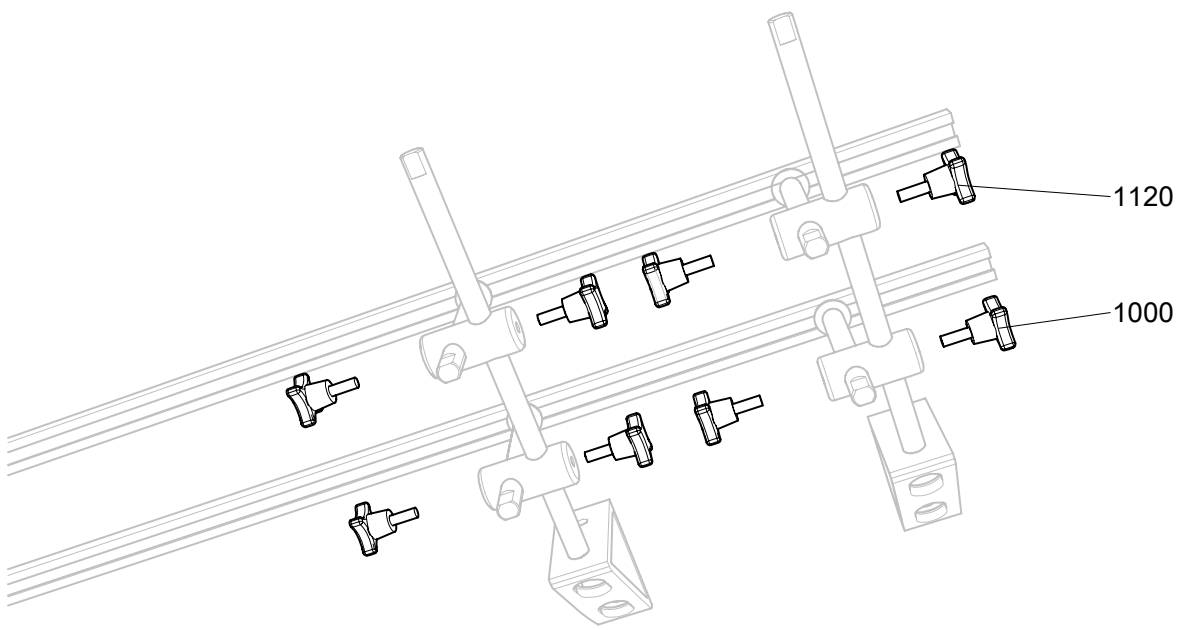
8x12 Conveyor



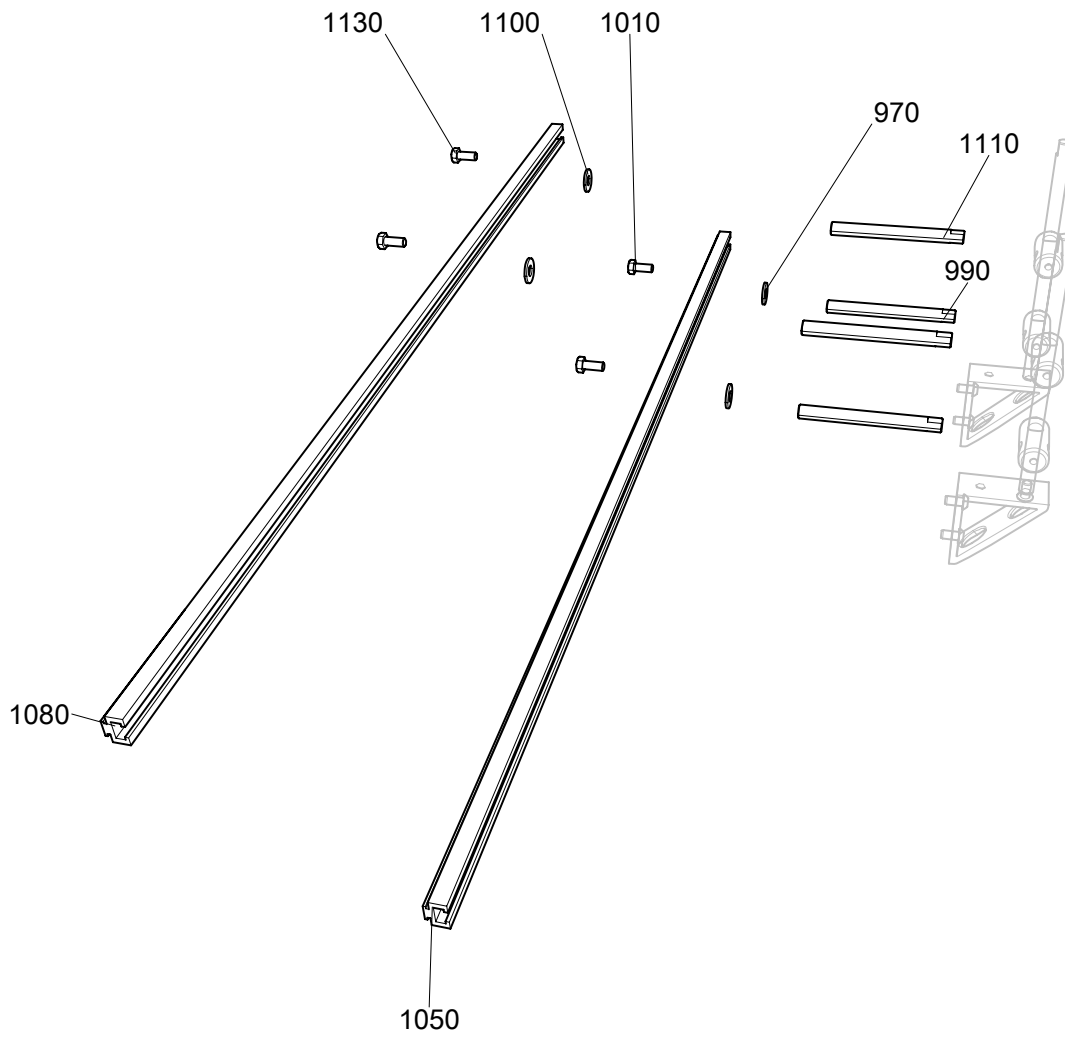
Guide Rails



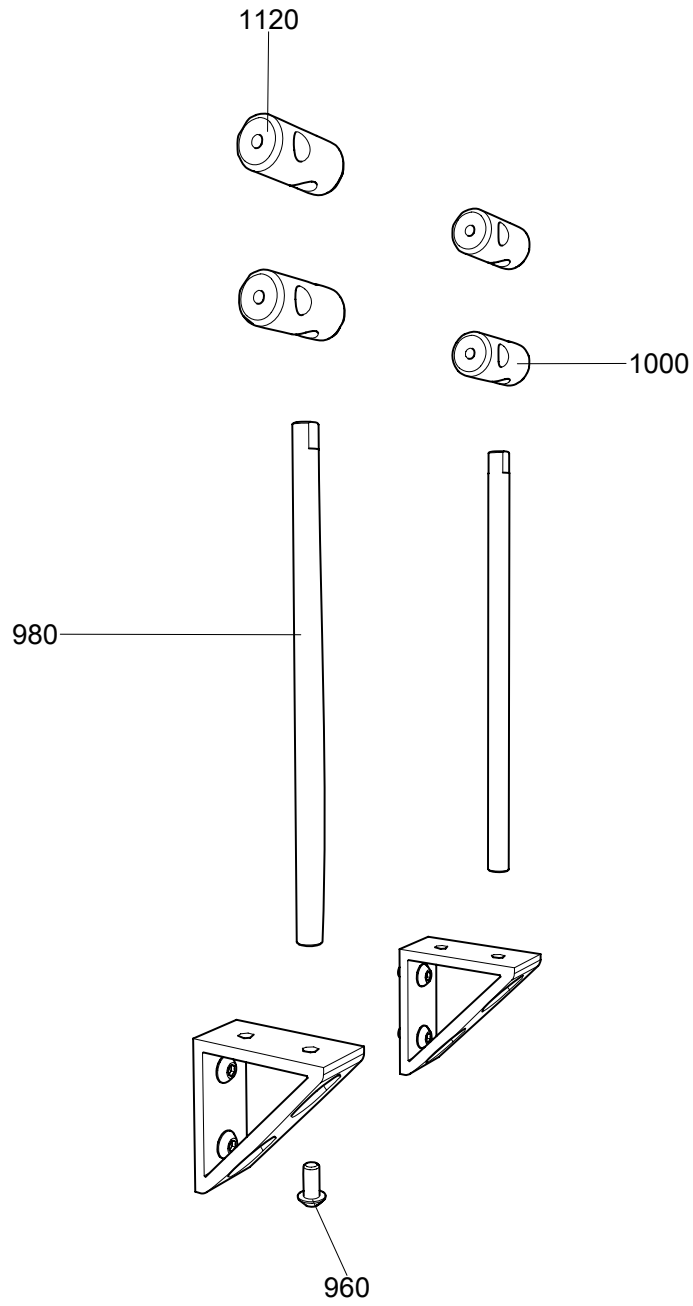
Guide Hardware



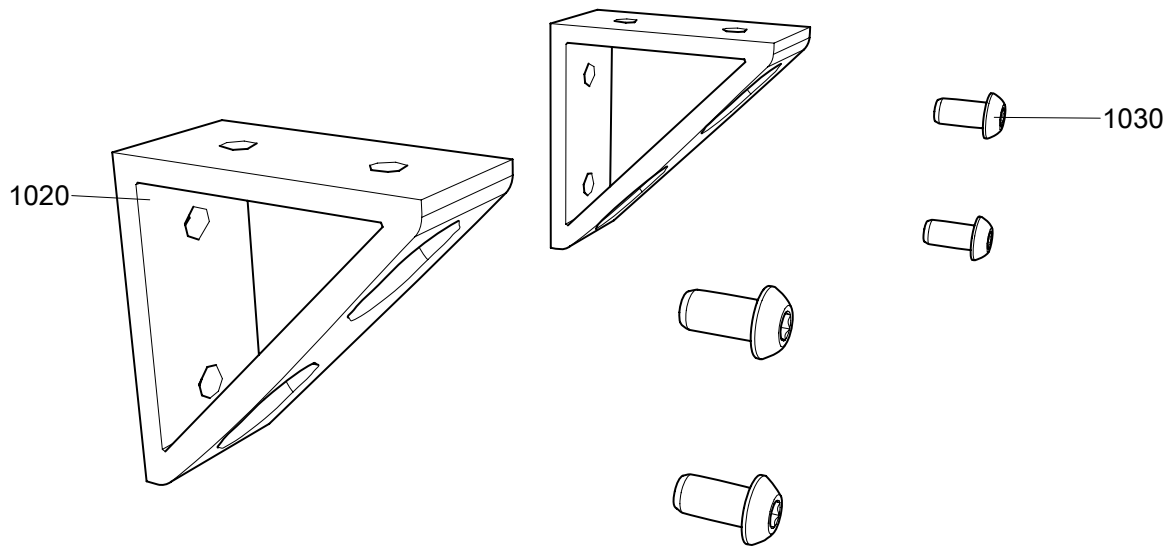
Rod Adjustment Knobs



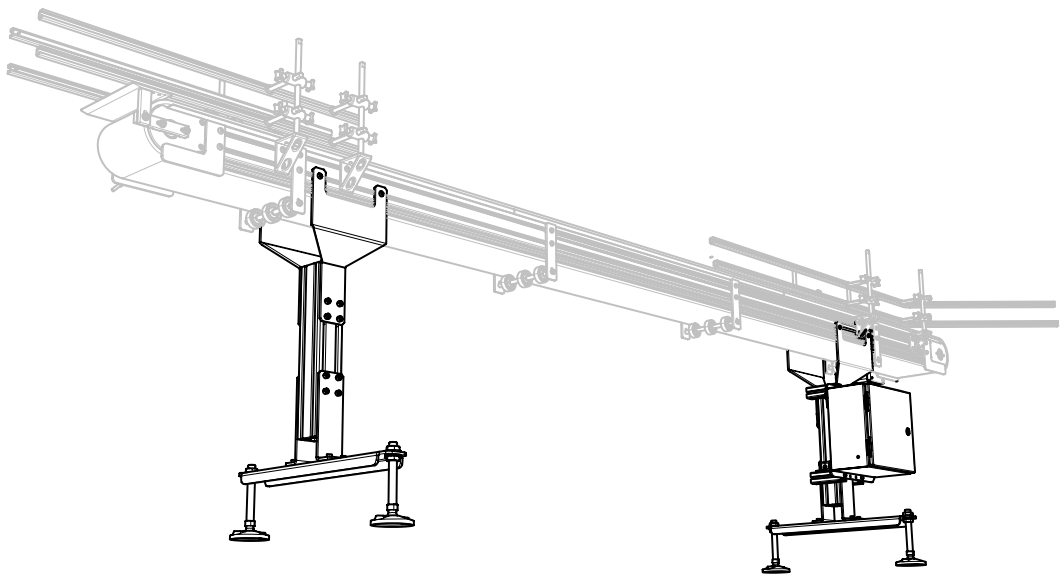
Rails and Hardware



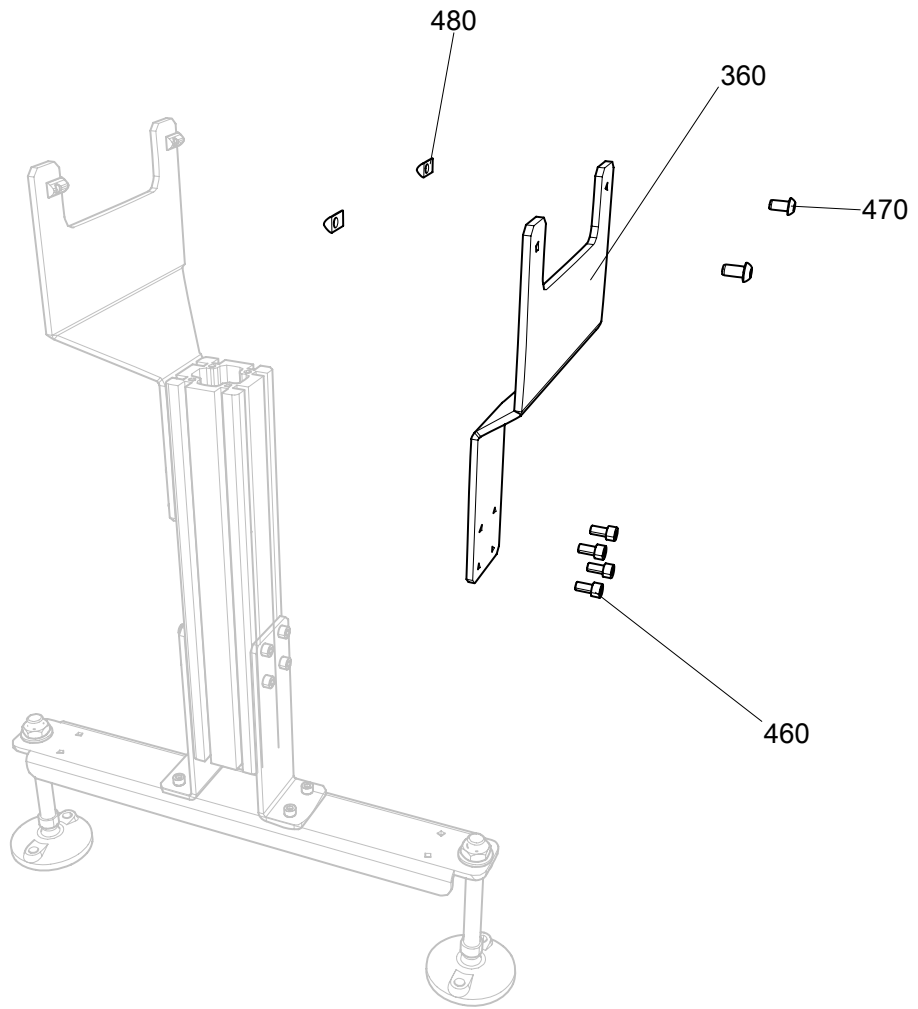
Rod Adjustment Assembly



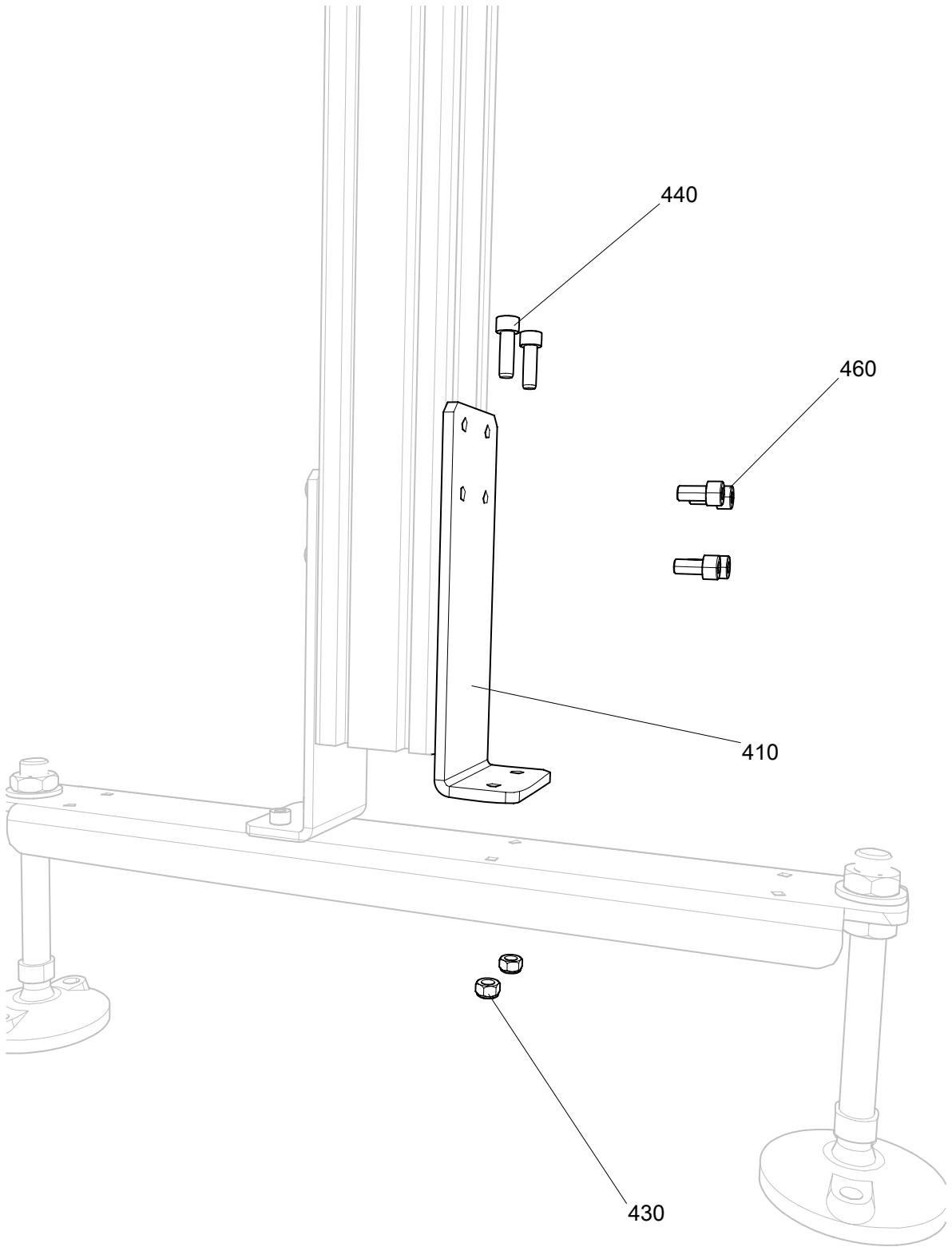
Bracket Assembly



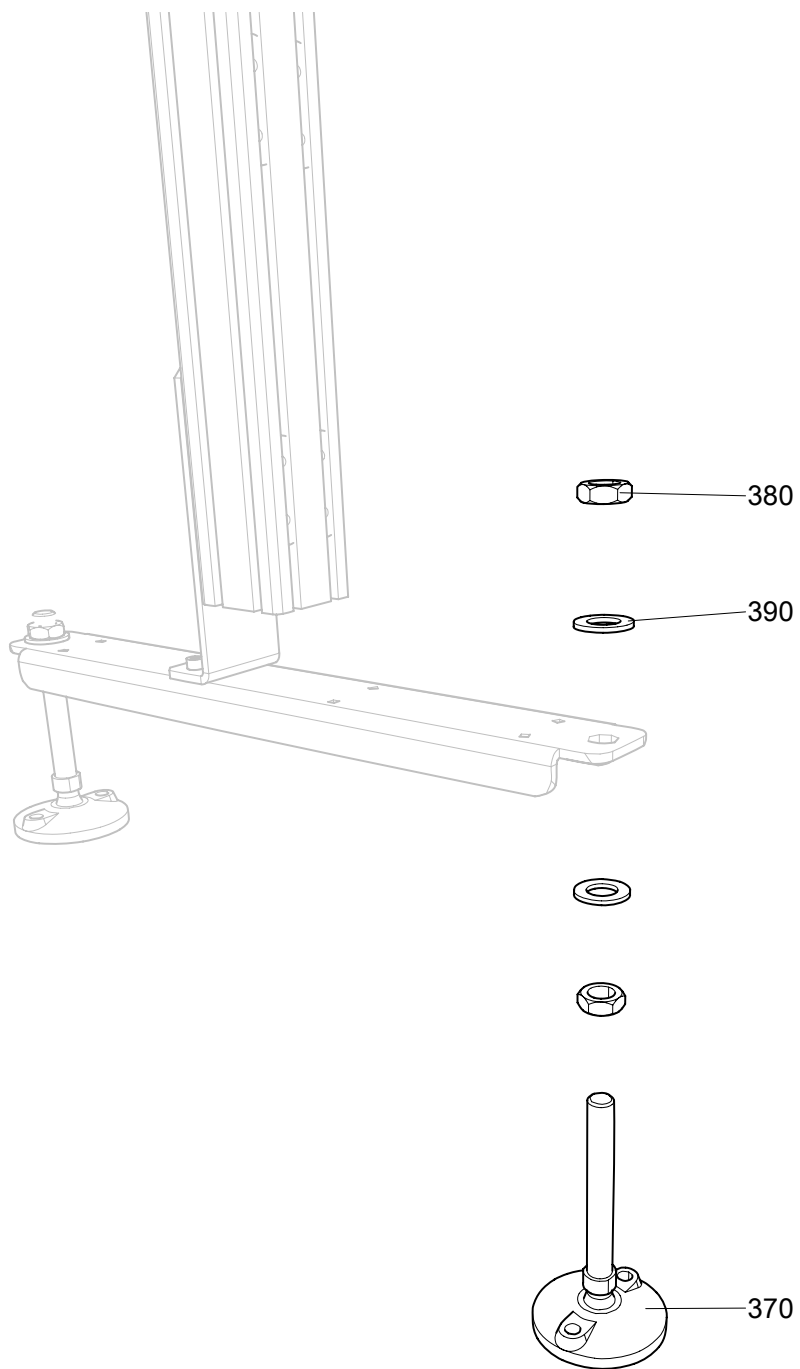
Leg Assembly



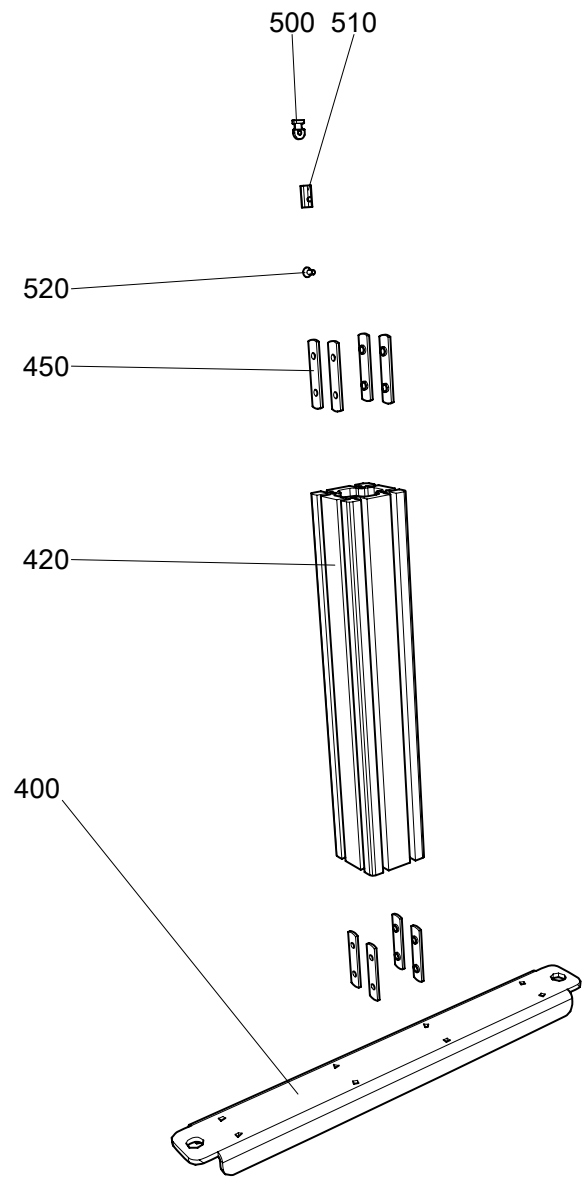
Upper Leg Bracket



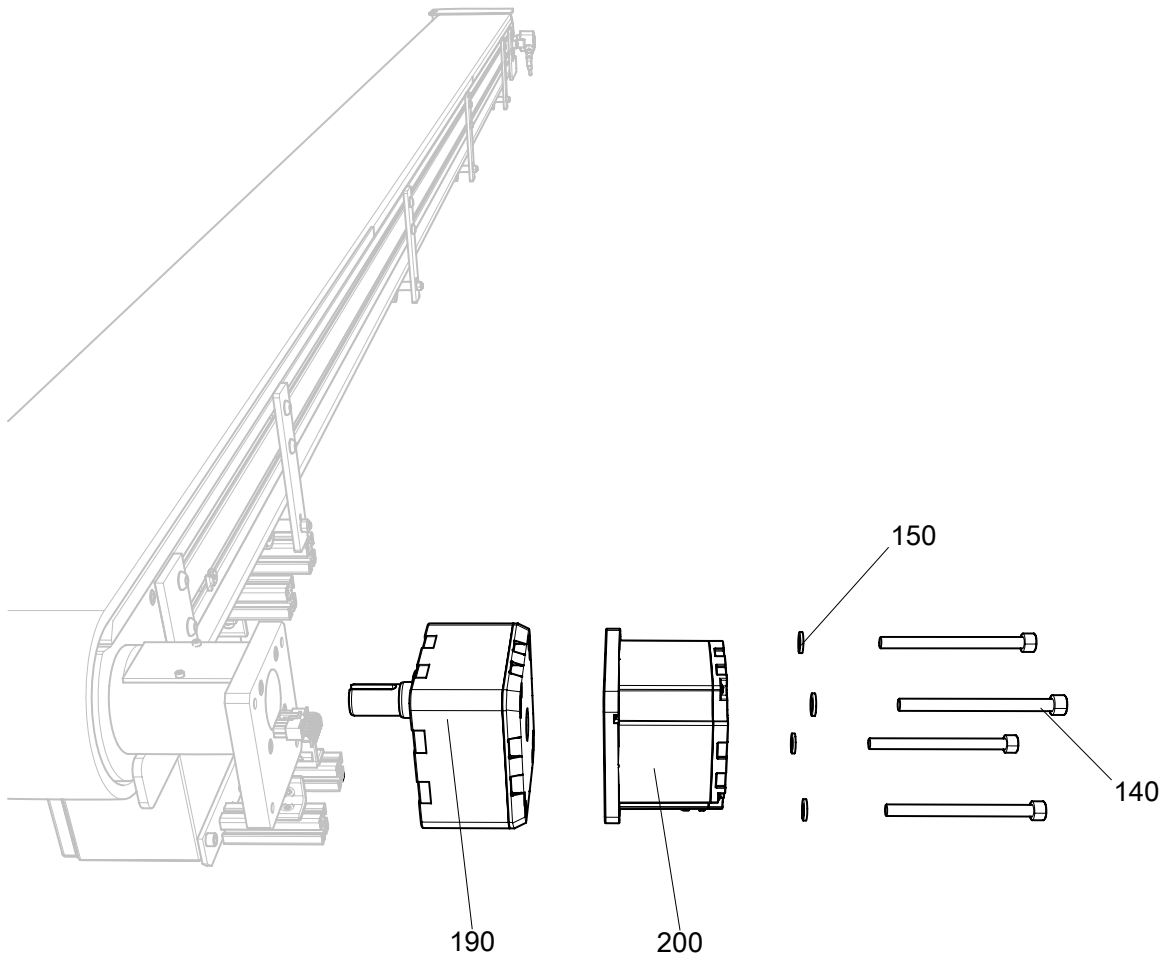
Lower Leg Bracket



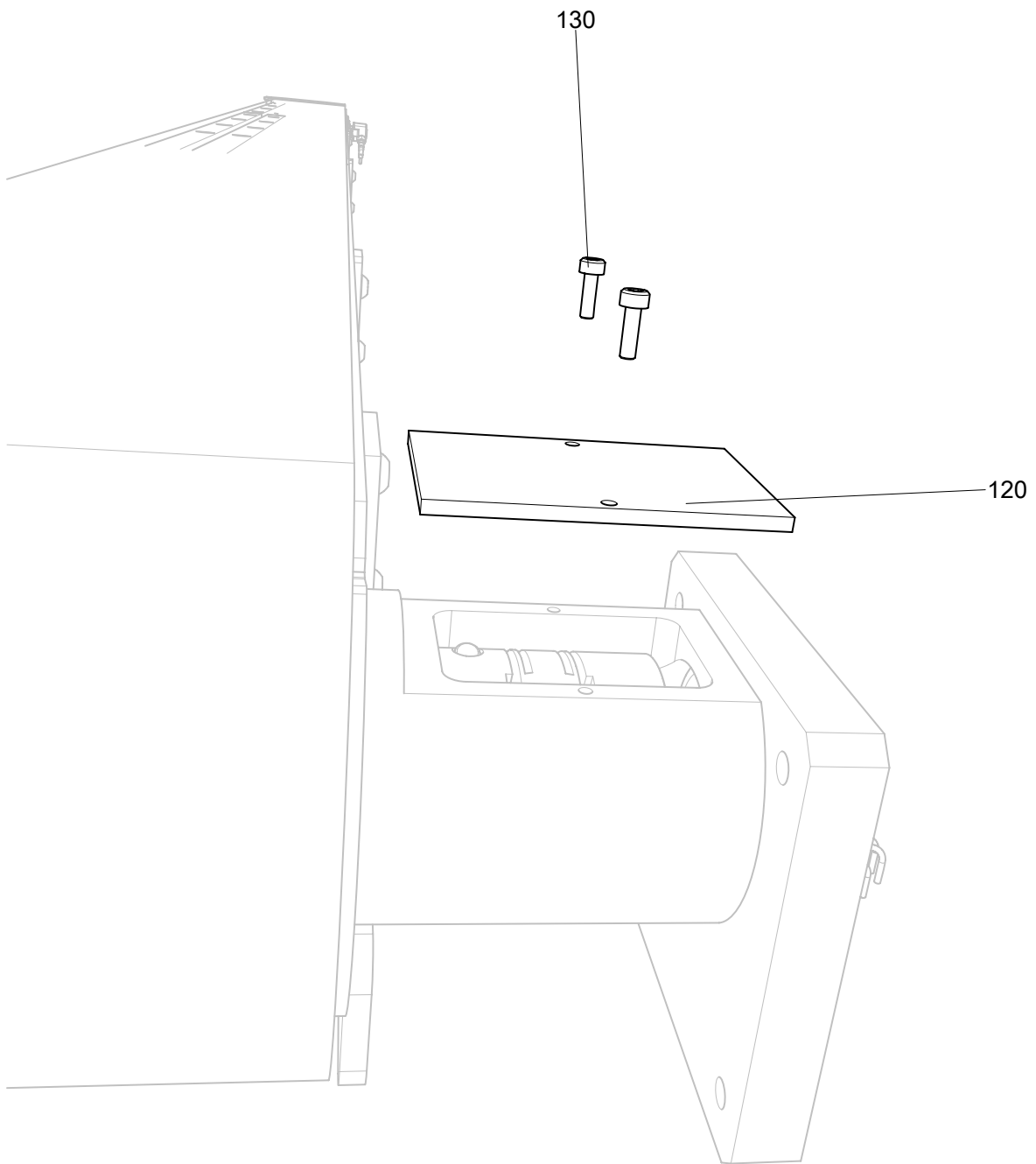
Leveling Foot



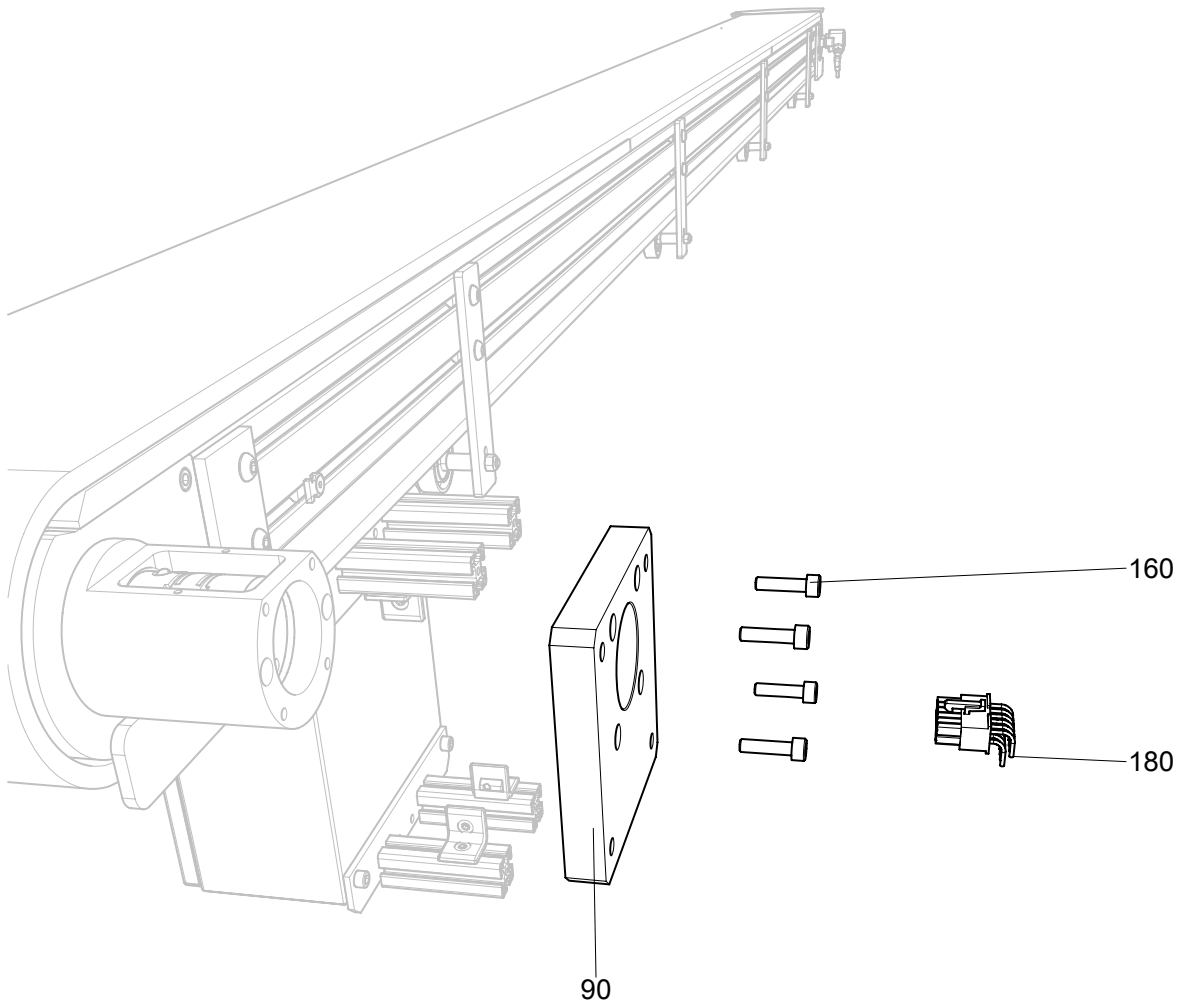
Leg Extrusion



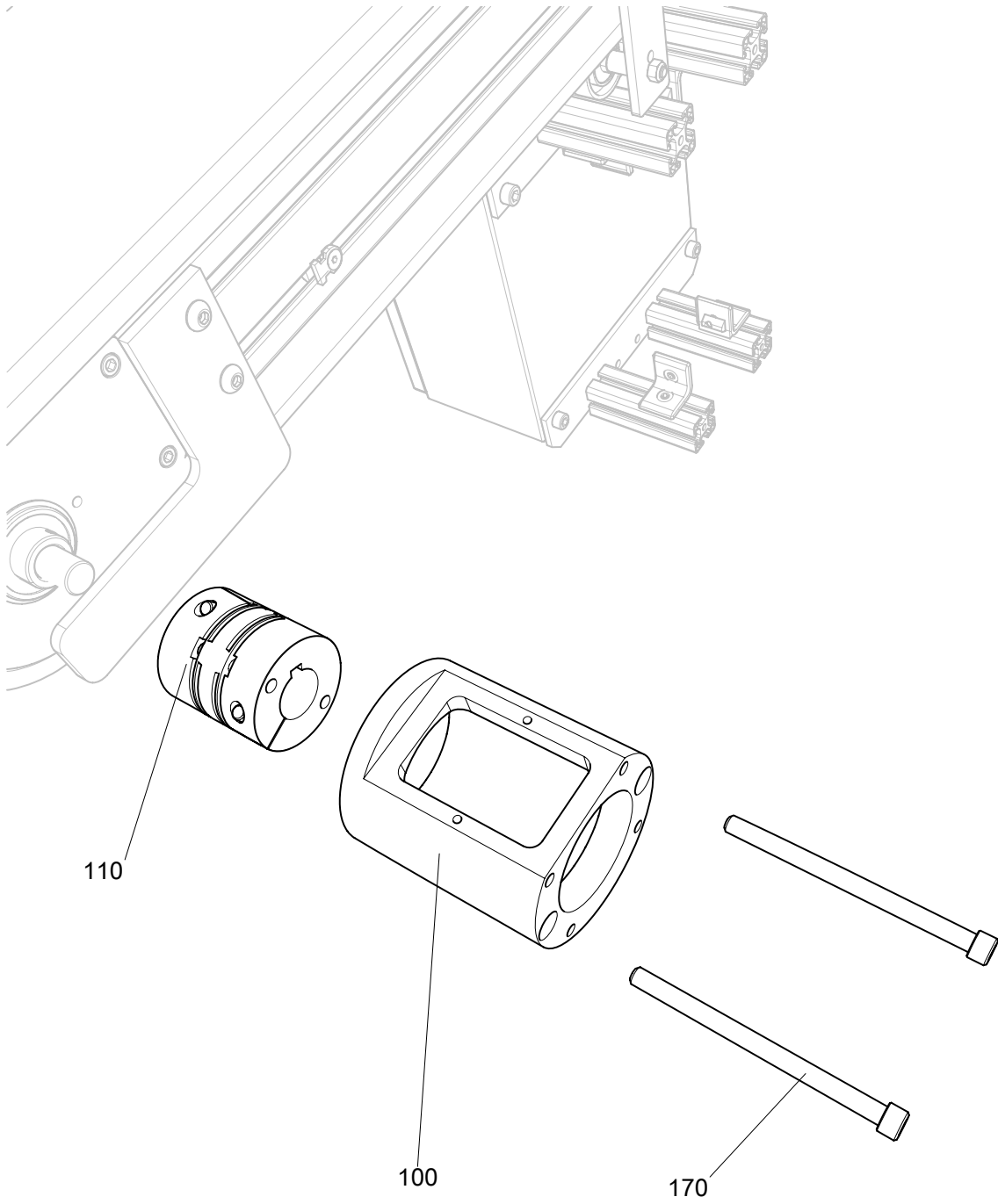
Conveyor Gearbox and Motor



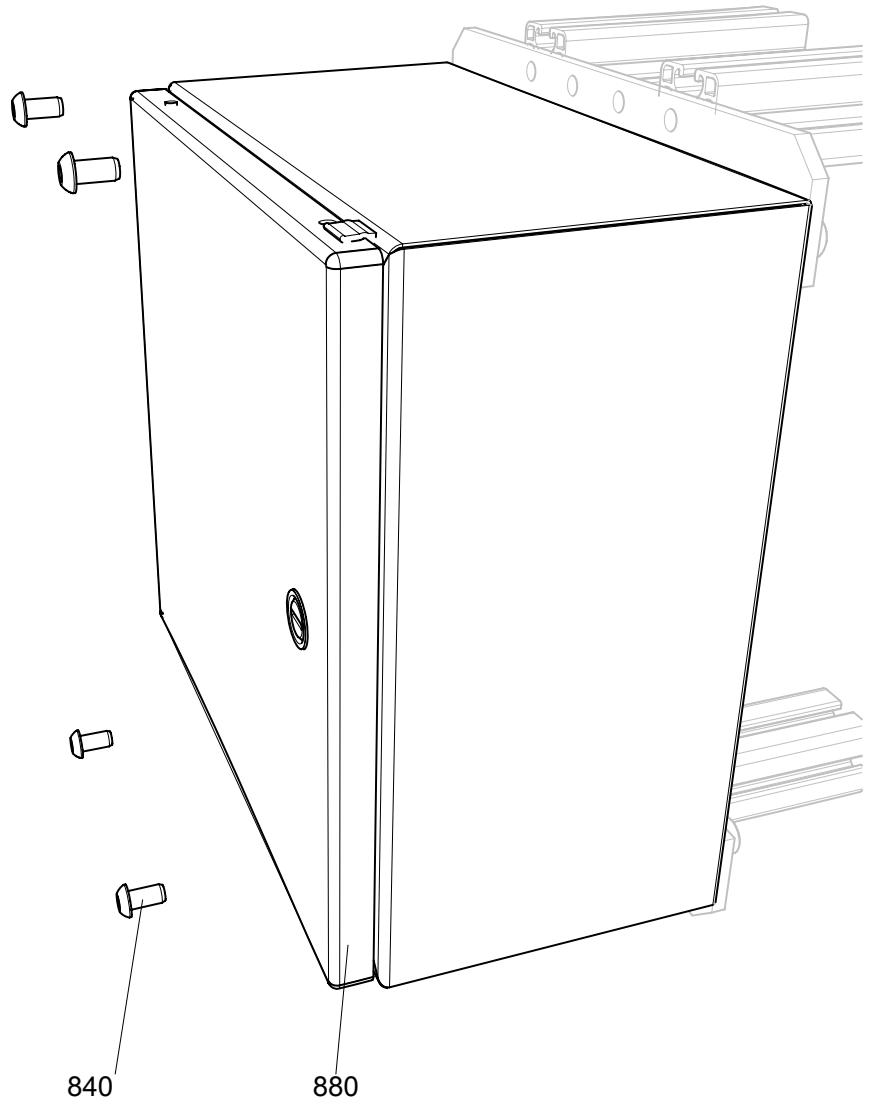
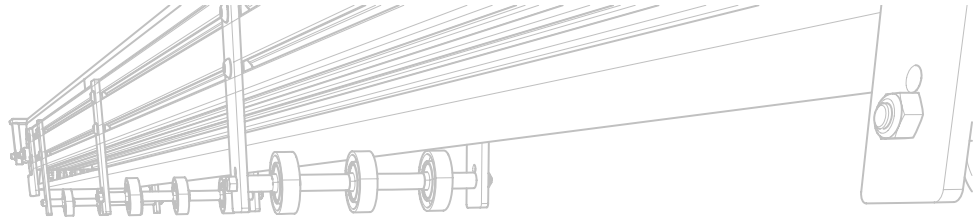
Cover Plate



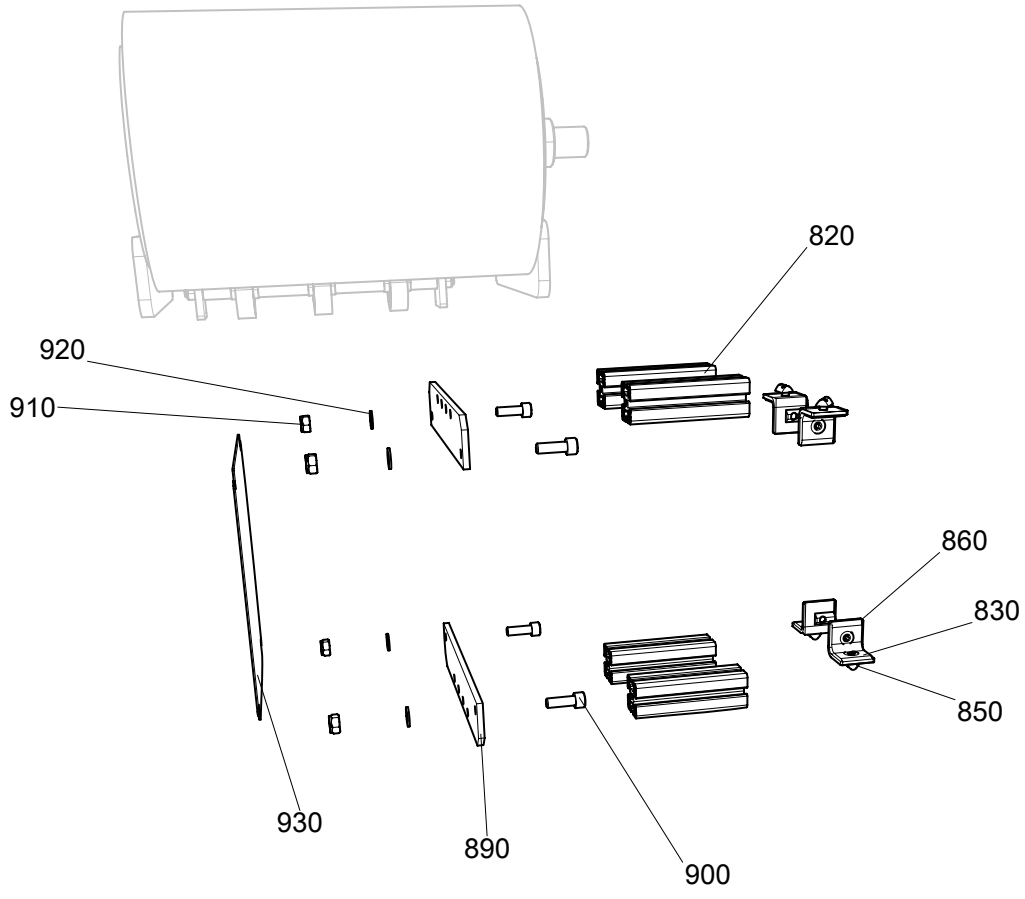
Drive Adaptor Plate



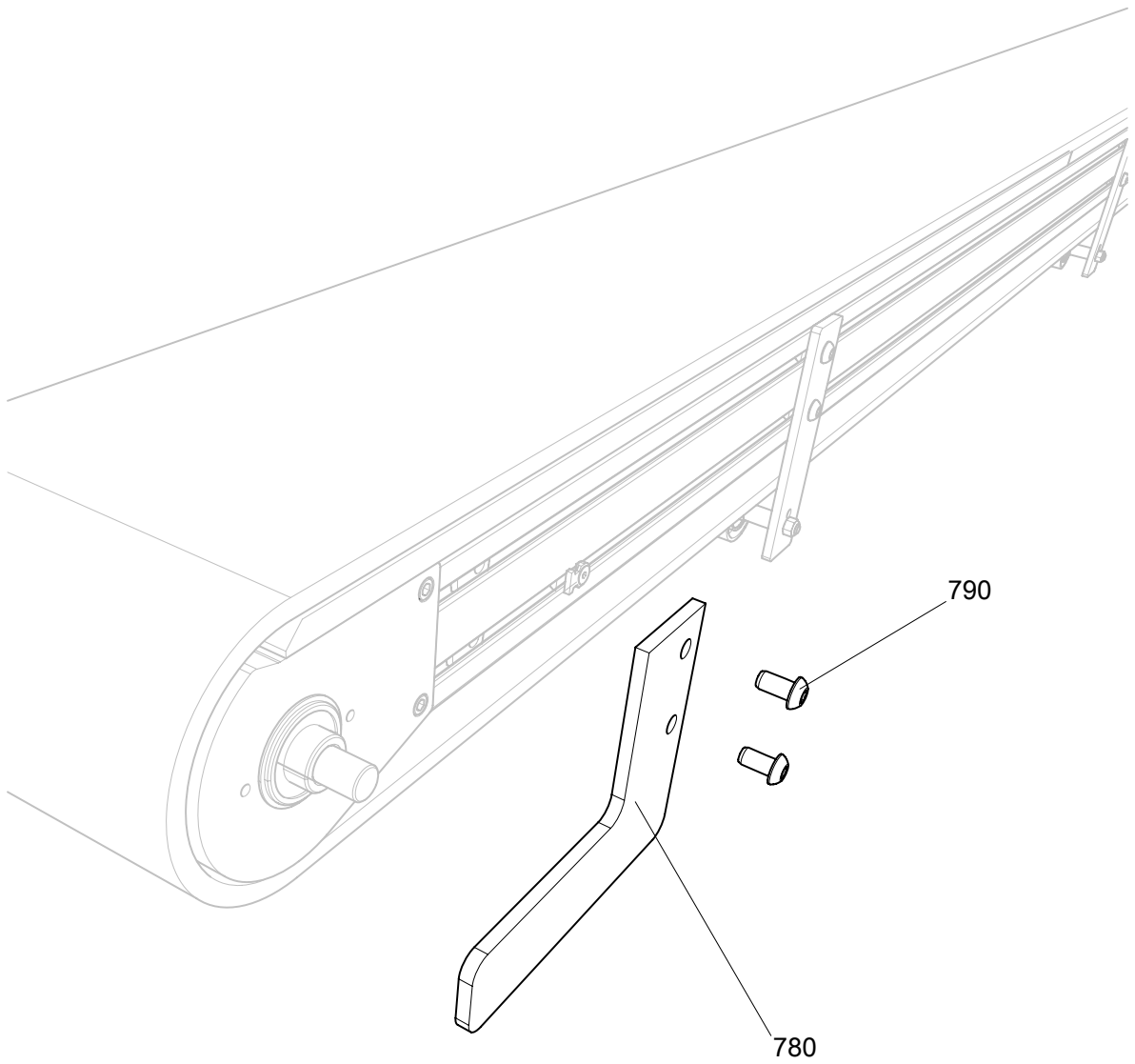
Adaptor Gear Box



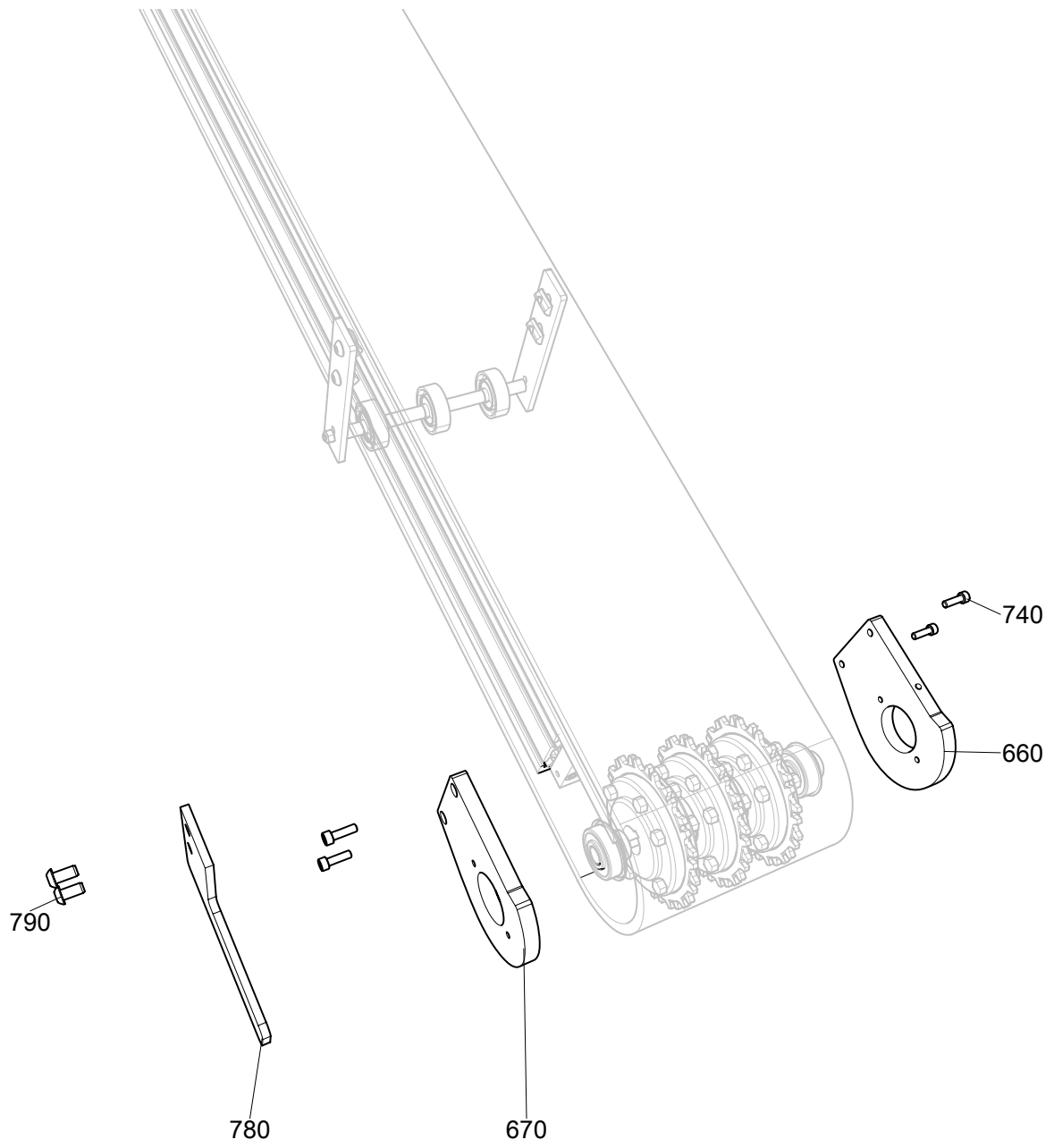
12x12 Enclosure



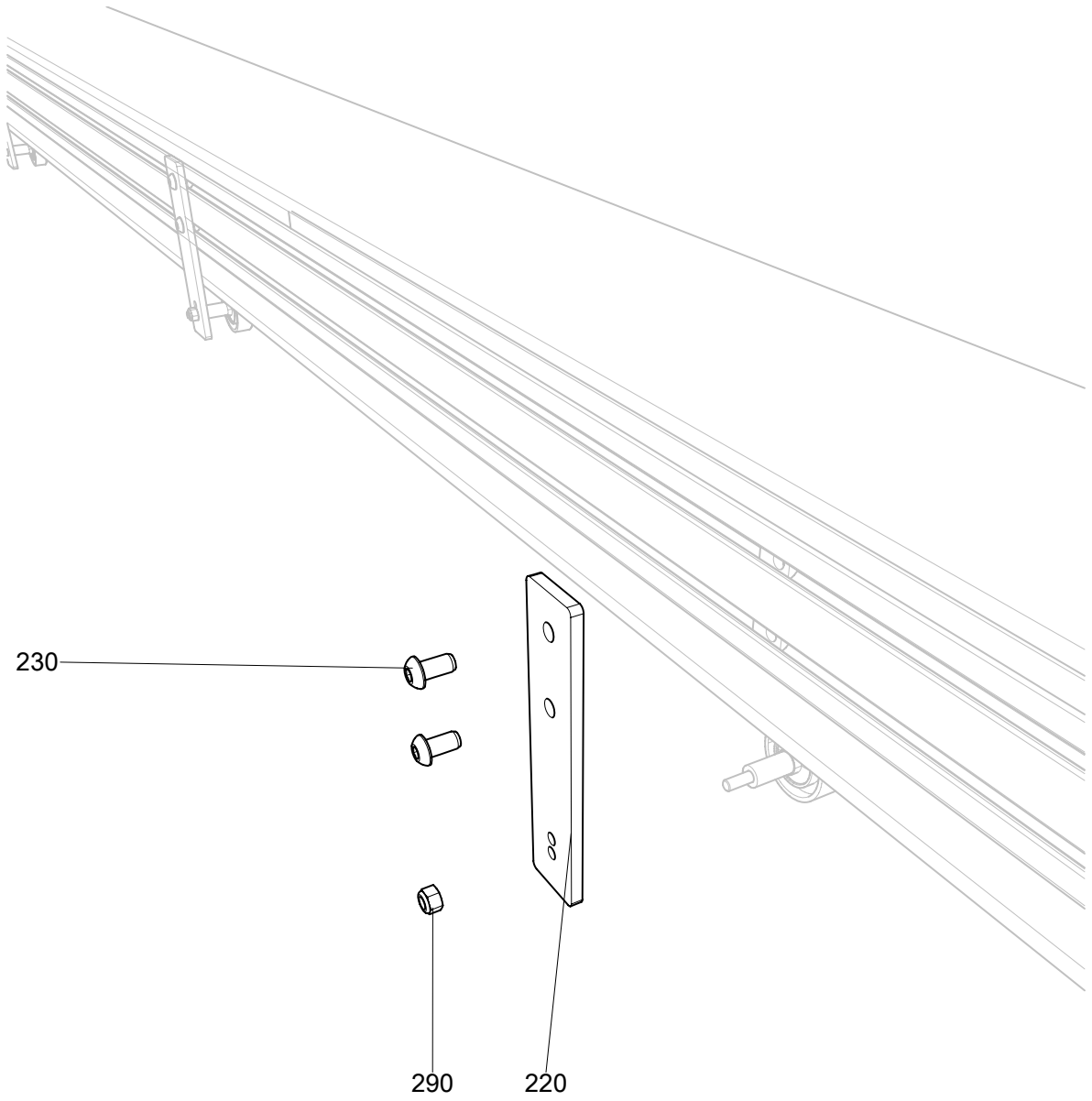
12x12 Extrusion Bracket



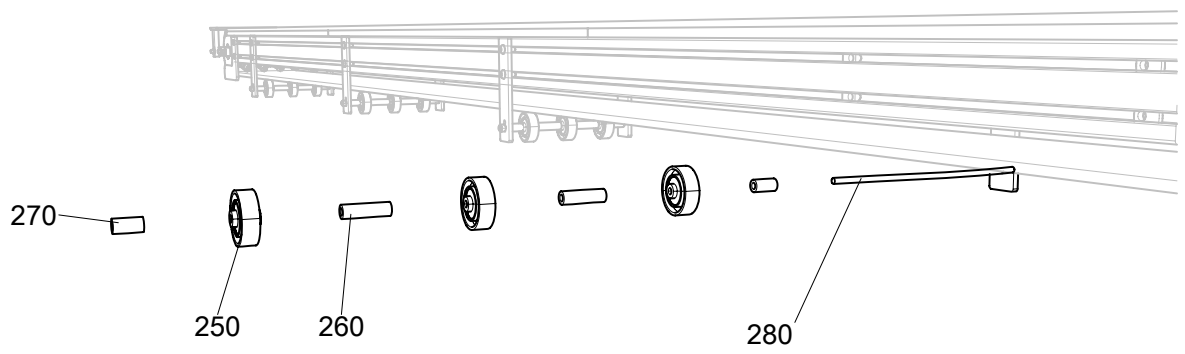
Conveyor Guard



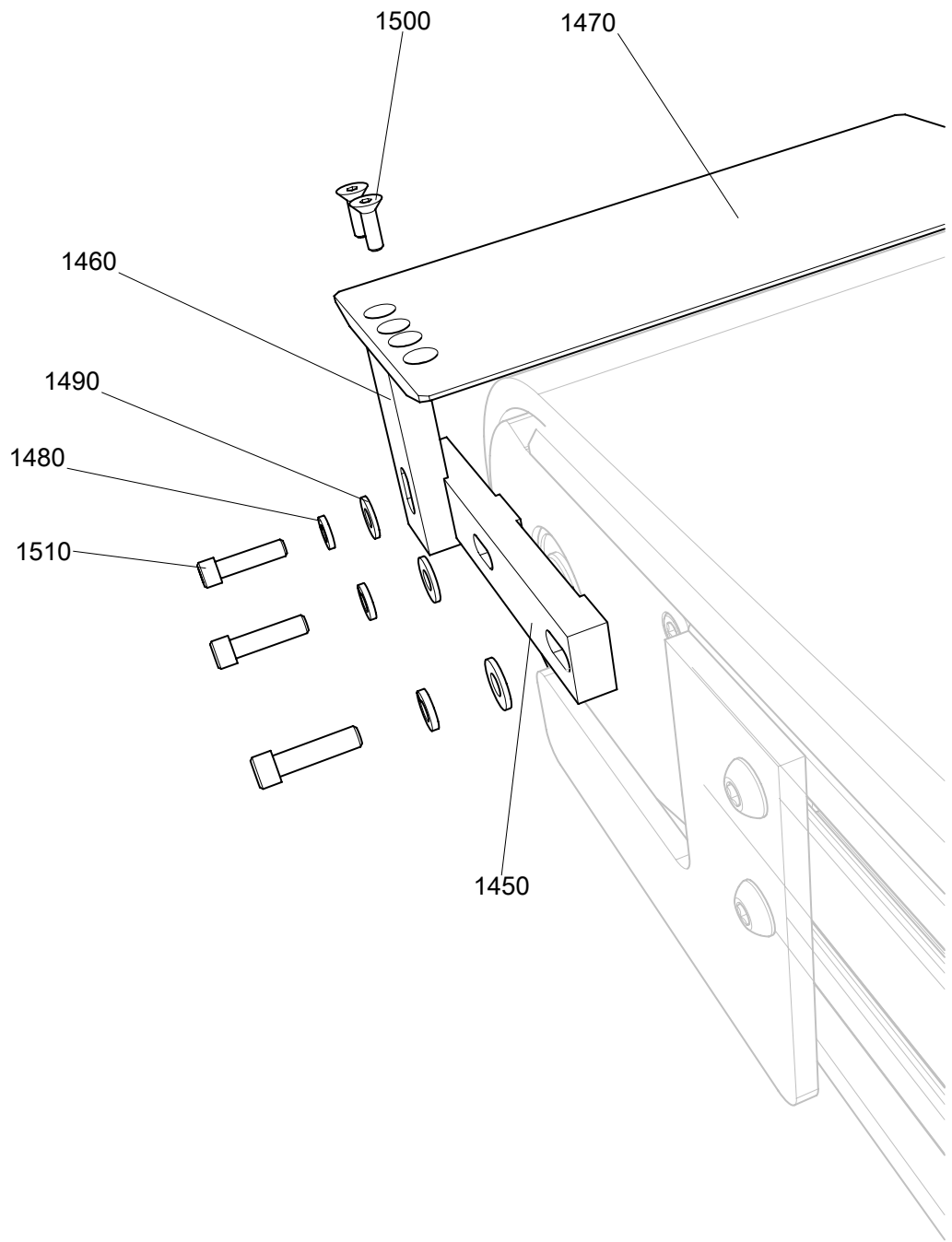
Shaft Plate



Idler Side Plate

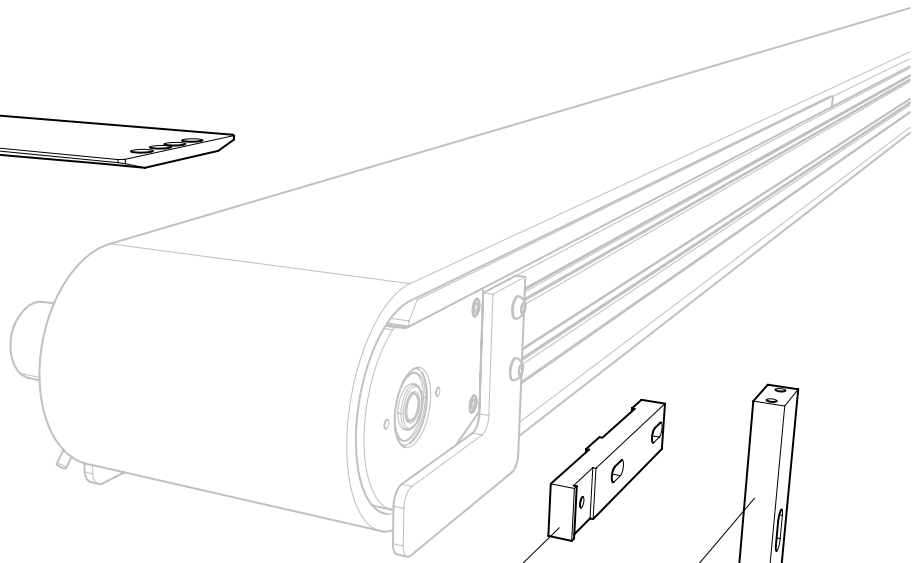


Wheel Skates



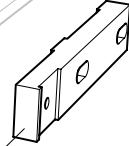
Dead Plate Hardware

1470

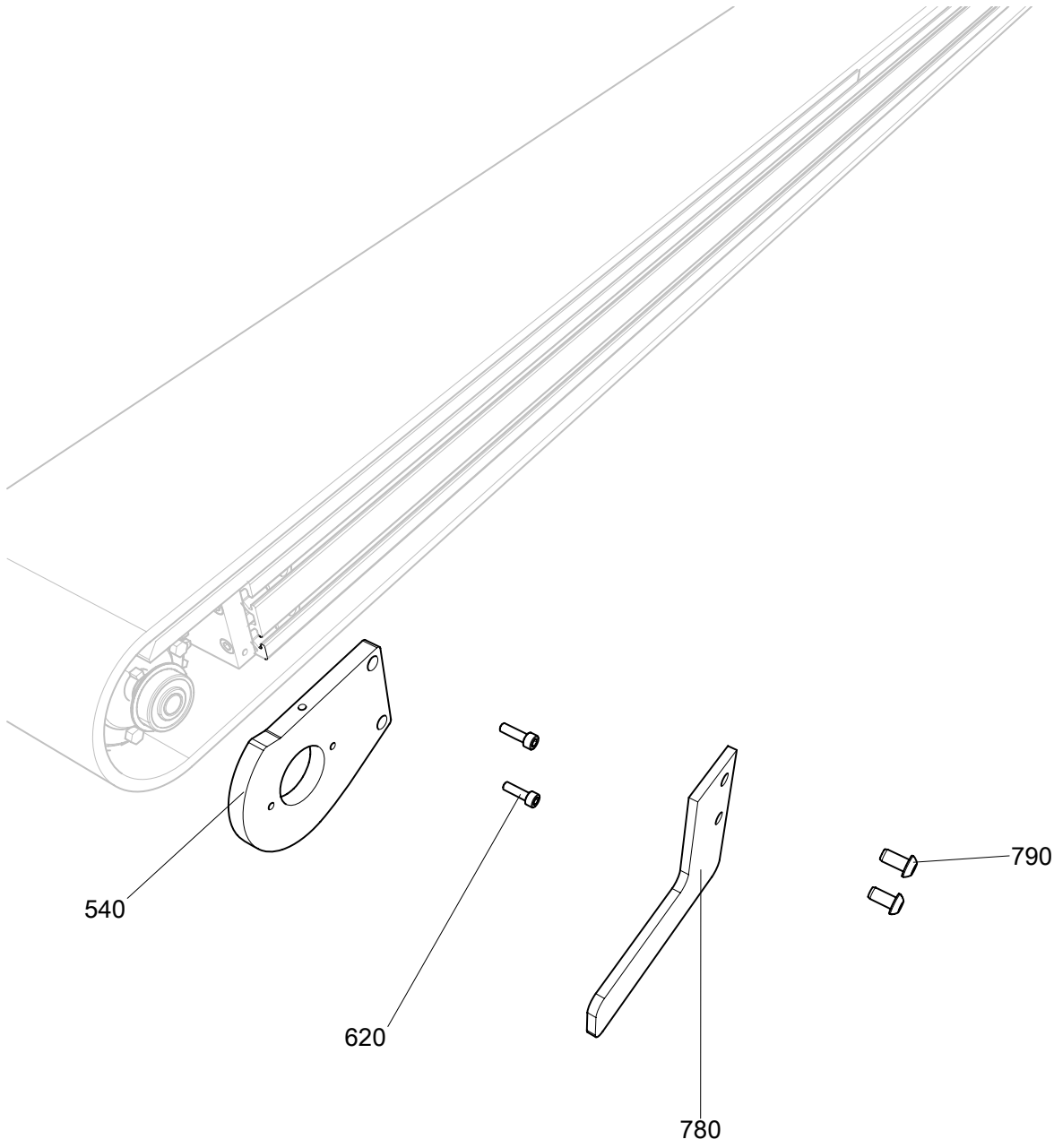


1450

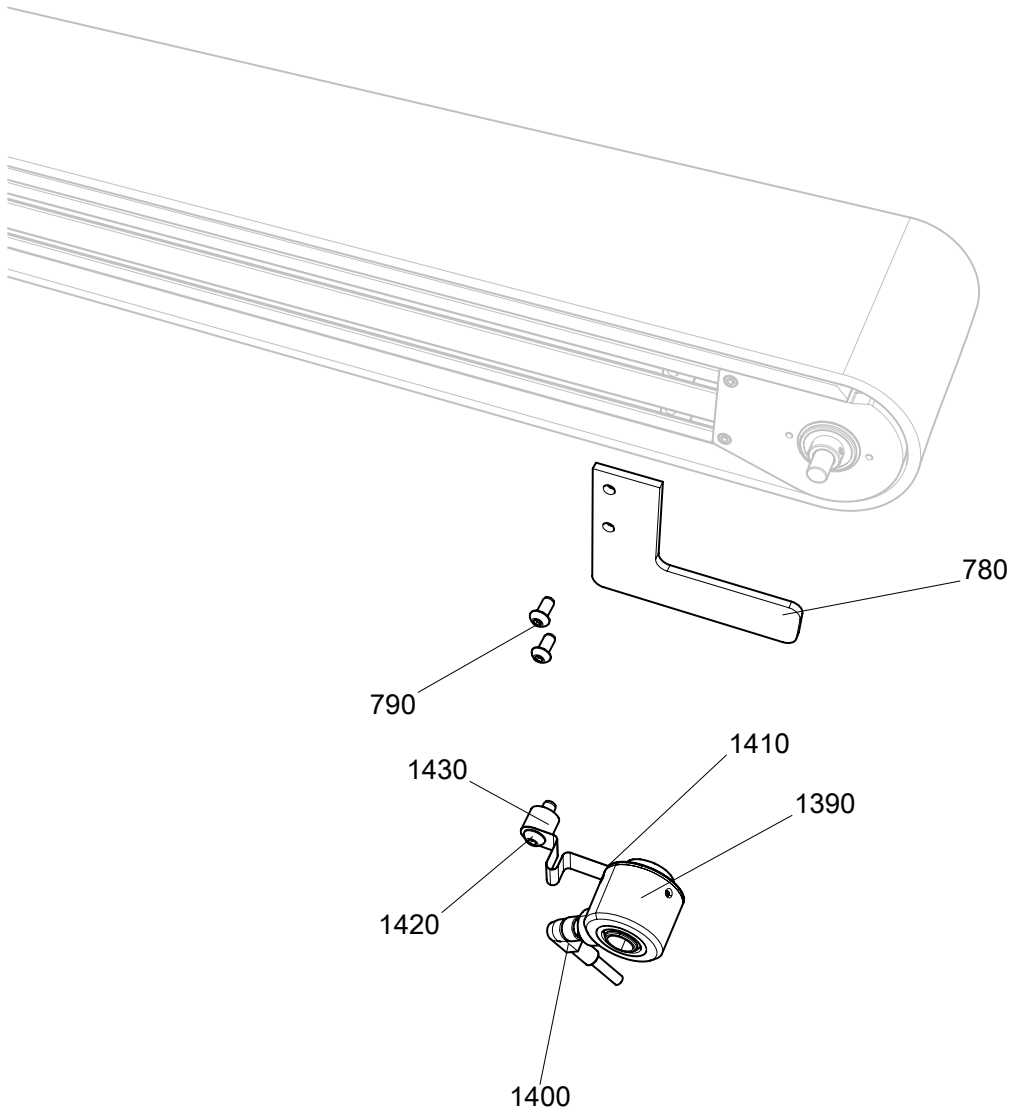
1460



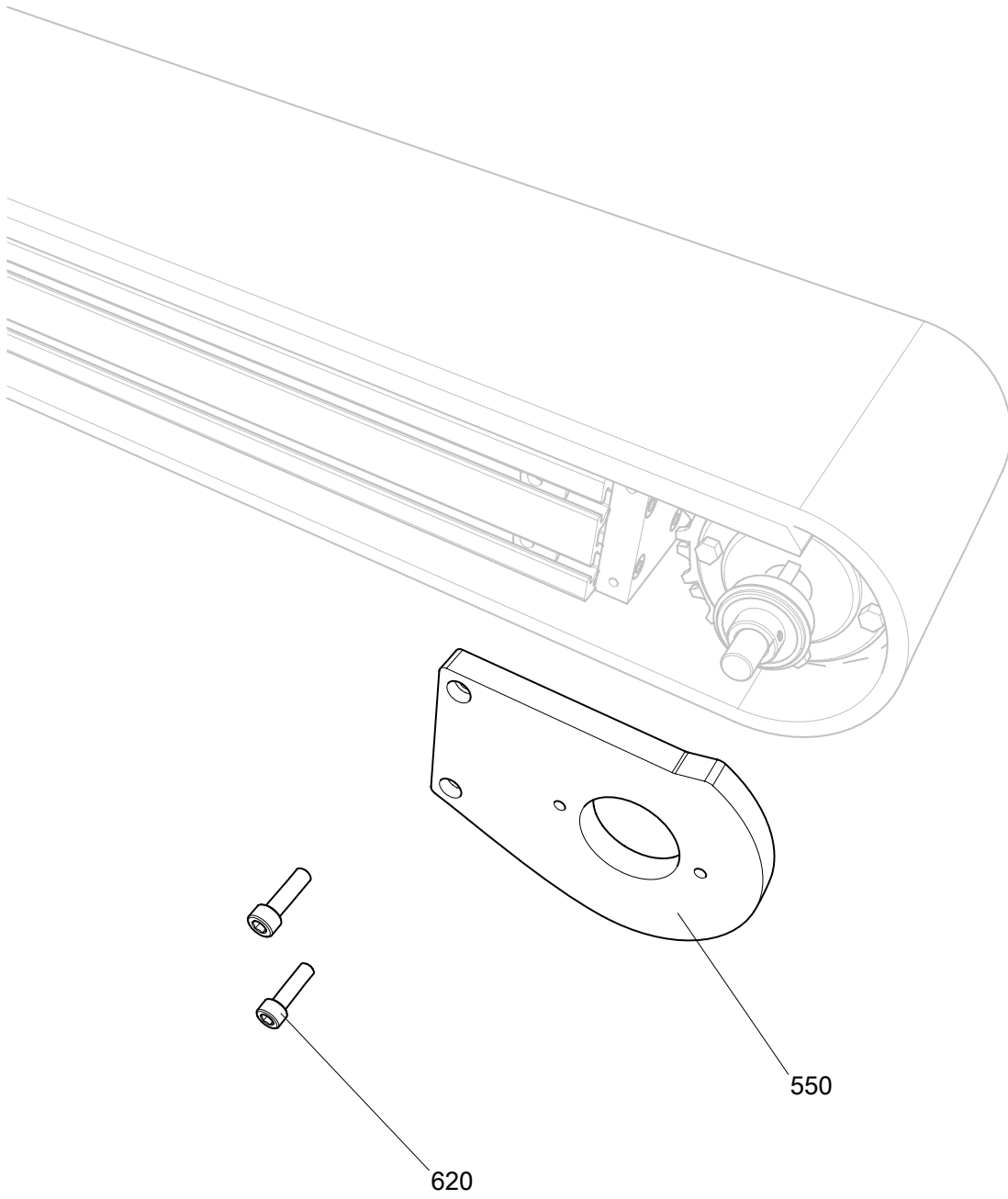
Dead Plate



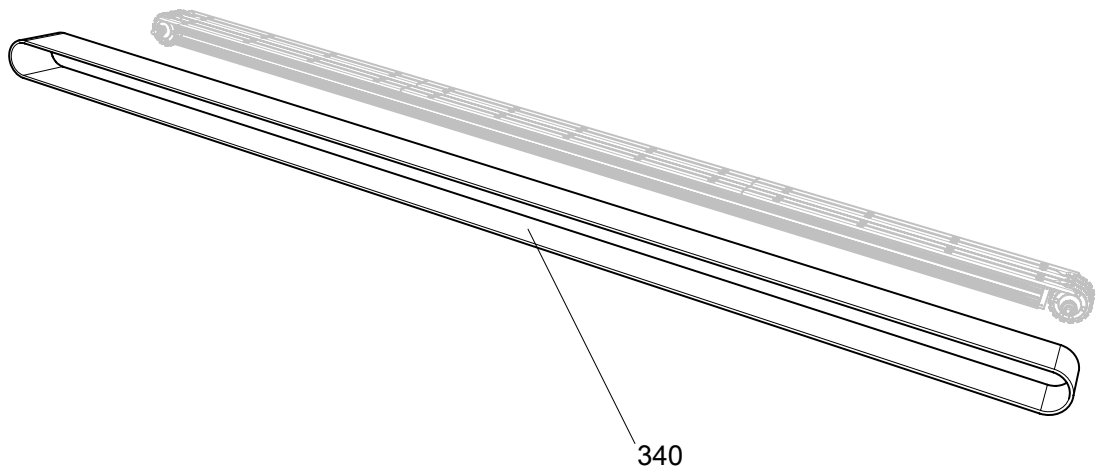
Conveyor Guard and Shaft Plate



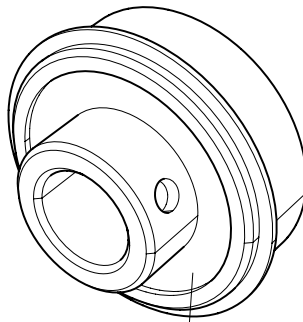
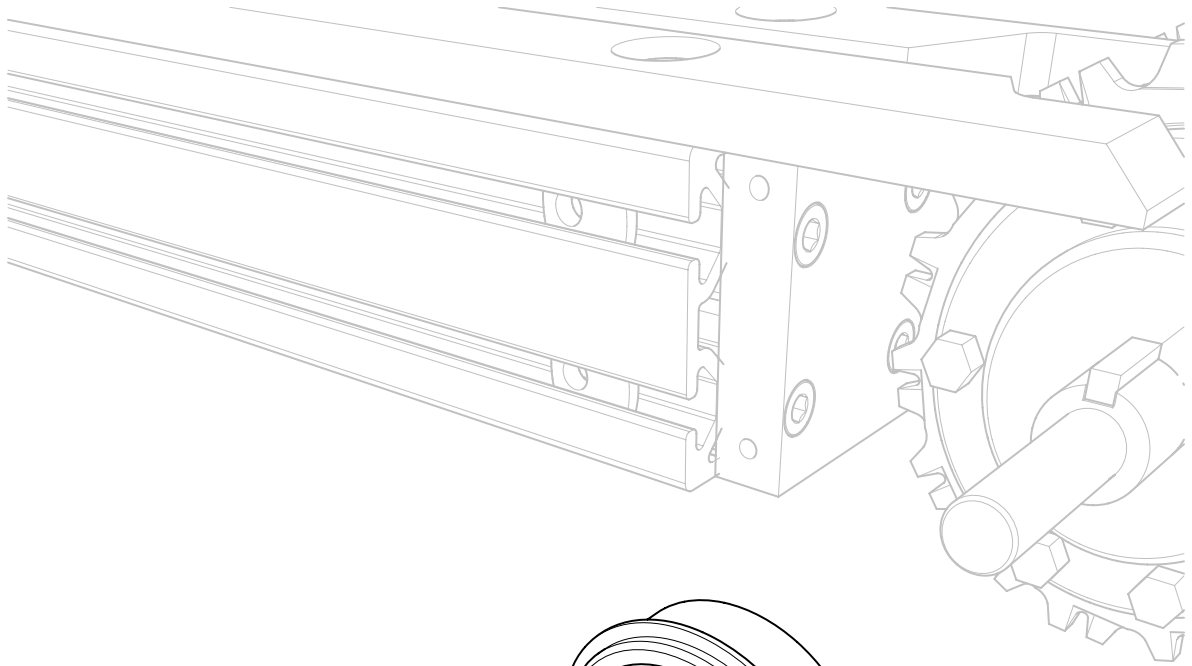
Encoder and Guard



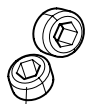
Front Shaft Plate



8x26 Conveyor Chain

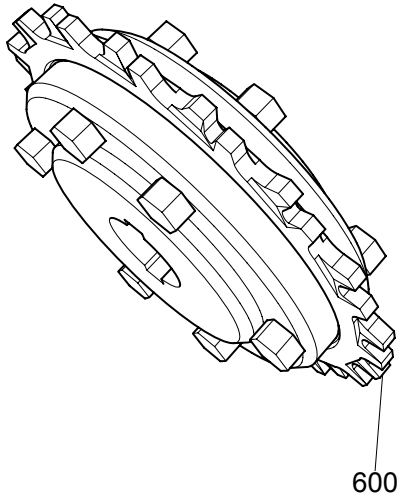
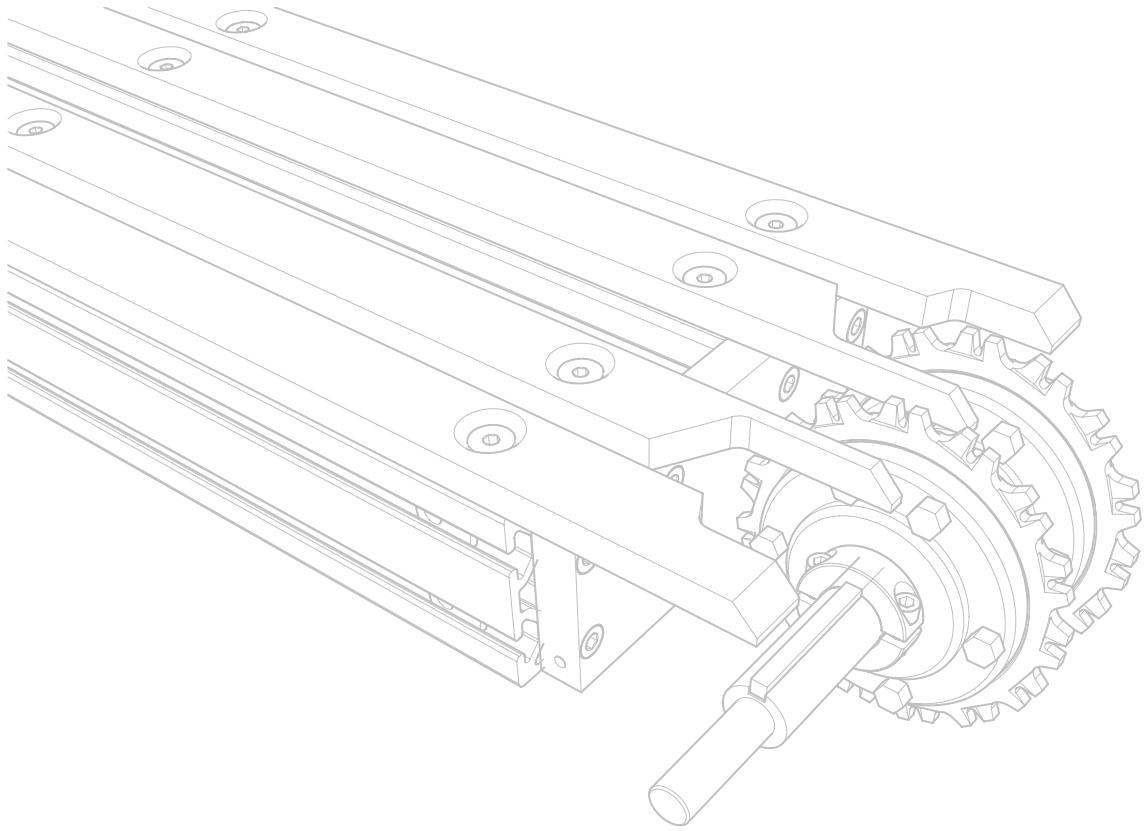


31095

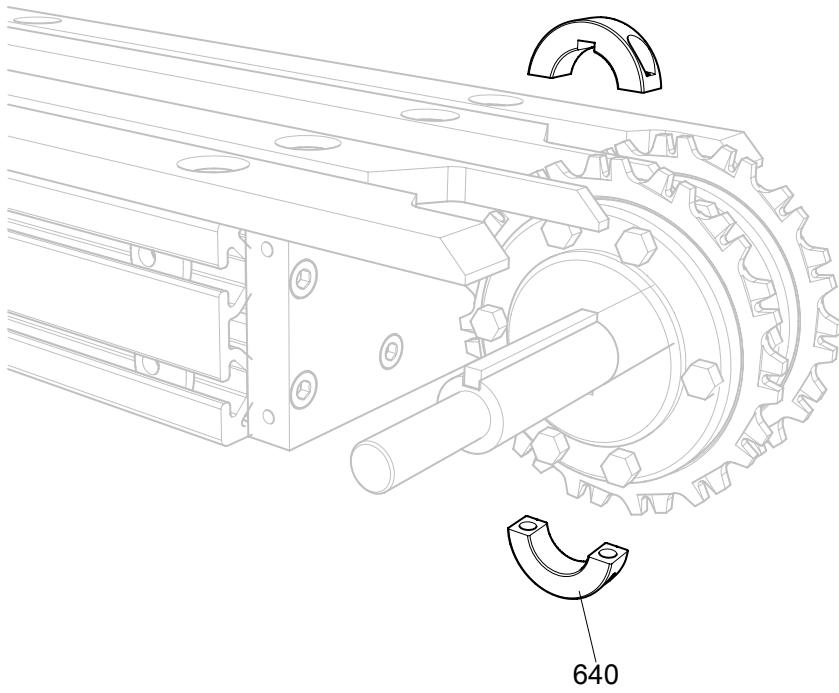


570

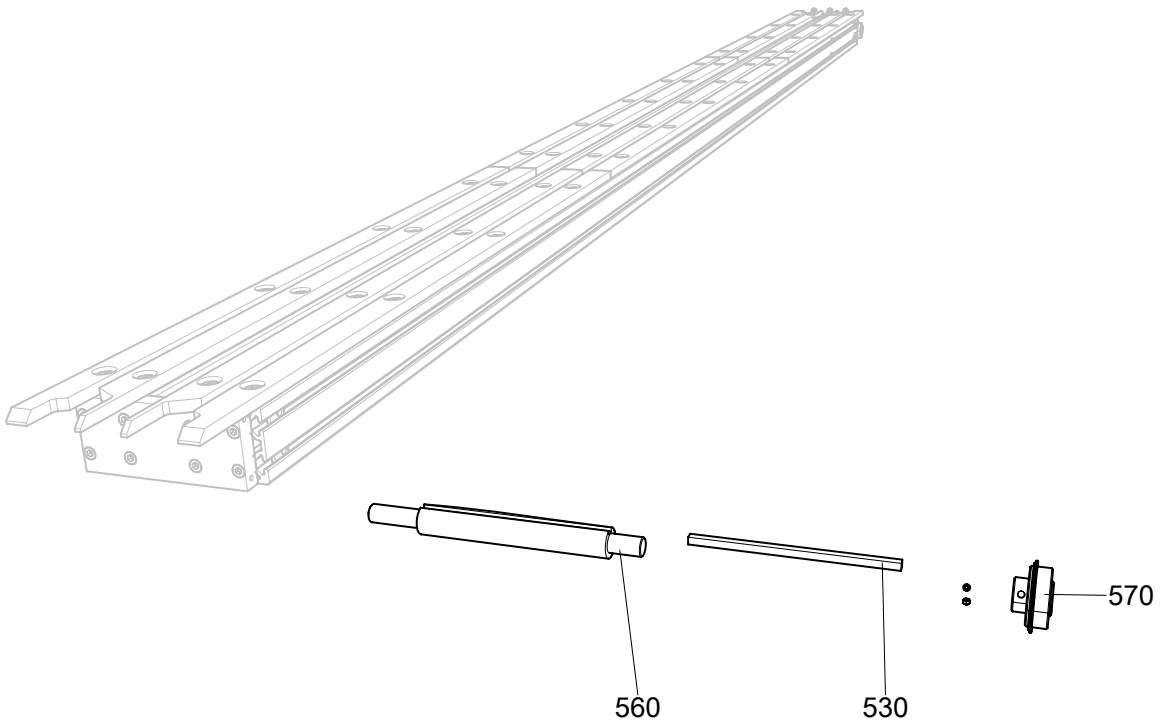
31095 Bearing



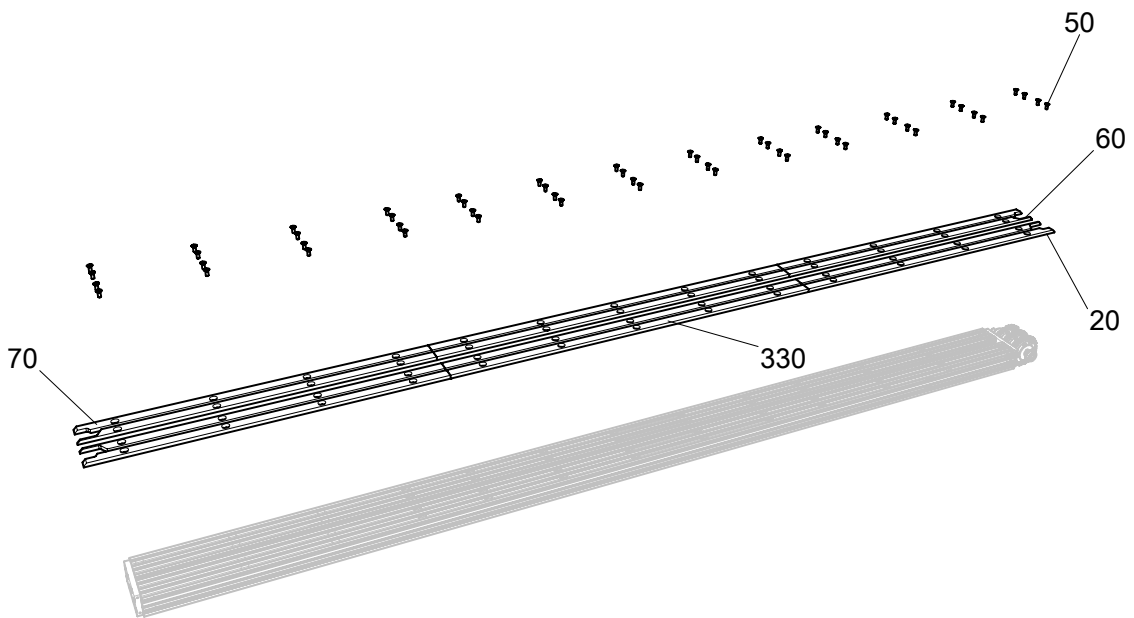
40 Series Tie Base Assembly



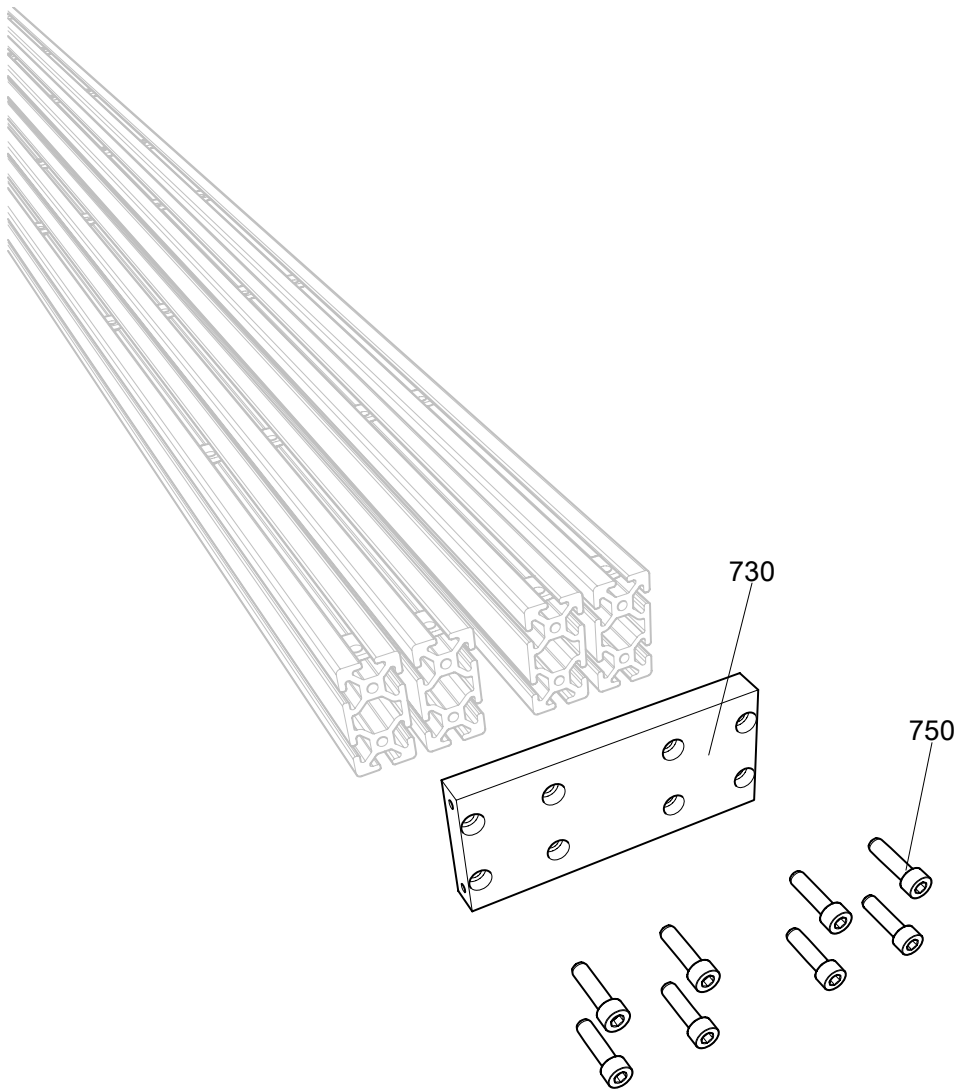
1 Inch 2 Piece Collar



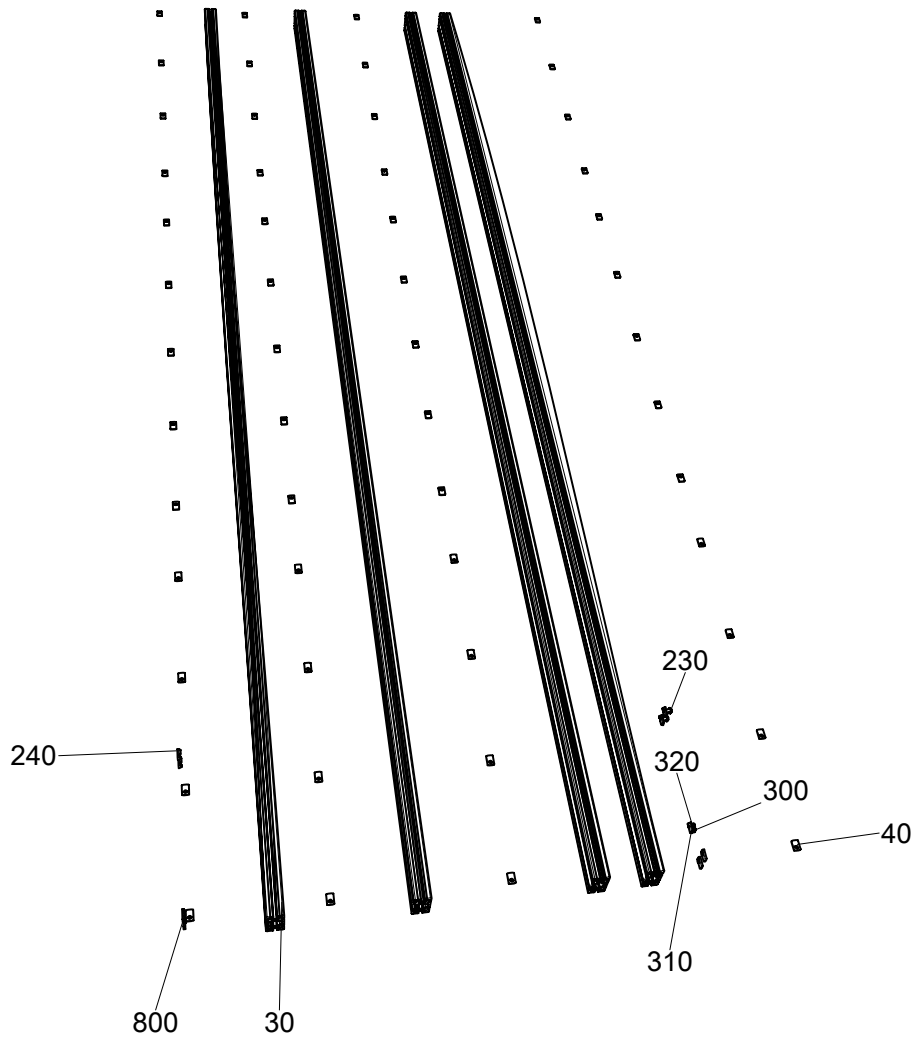
Conveyor Shaft Key and Bearing



Conveyor Slides



Conveyor End Plate



Conveyor Body

ITEM	DESCRIPTION	PART NO.	REV	QTY	INFO
10	8" WIDE X 12' LONG CONVEYOR	ASSY-034819	-	1	
20	•CONVEYOR BODY 8IN X 12FT	ASSY-038966	-	1	
30	••EXTRUSION 4080 X 3473.4mm	MECH-038968	-	4	
40	••TNUT, ECONOMY, M8 X 1.25, 80/20 40-1981	MECX-033187	M	52	
50	••SCREW, FHCS, M8 X 20 LG, SS	HDWX-013366	D	52	
60	••CONVEYOR SLIDE INNER LEFT	MACH-035329	A	2	
70	••CONVEYOR SLIDE INNER RIGHT	MACH-035330	A	2	
80	••DRIVE ASSY RS2-4 CONVEYOR	ASSY-023585	A	1	
90	•••DRIVE ADAPTER PLATE	MACH-026101	A	1	
100	•••ADAPTER GEARBOX	MACH-026102	A	1	
110	•••COUPLING MODIFICATION (CONVEYOR DRIVE)	MACH-026346	A	1	
120	•••COVER ADAPTER	MACH-026364	A	1	
130	•••SCREW, SHCS, M3 X 10 LG, SS	HDWX-014050	A	2	
140	•••SCREW, SHCS, M8 X 100 LG, SS	HDWX-014095	A	4	
150	•••WASHER, LOCK, M8, SS	HDWX-014288	C	4	
160		HDWX-006727	-	4	
170	•••SCREW, SHCS, 1/4-20 X 3.50 LG, BO	HDWX-013869	A	2	
180	•••CABLE 3M EXTENSION FOR SPG MOTOR	ELEC-011153	A	1	
190	•••GEARBOX SPG 30:1	MECH-016331	A	1	
200	•••MOTOR SPG 10400	ELEC-011925	A	1	
210	••IDLER ASSY	ASSY-026833	A	4	
220	•••IDLER SIDE PLATE	MECH-017105	A	2	
230	•••SCREW, BHCS, M8 X 16 LG, SS	HDWX-013251	J	4	
240	•••NUT, T-NUT, SINGLE DROP-IN, M8, 80/20 40-1986	MECX-015584	B	4	
250	•••WHEEL SKATE NYLON 1.9DIA X.6	MECH-010946	B	3	
260	•••SPACER, 1 3/4in	MECX-017989	A	2	
270	•••OUTBOARD IDLER SPACER	MECH-017326	A	2	
280	•••STUD IDLER	MACH-031511	A	1	
290	•••NUT, HEX, NYLOCK, 1/4-20, PL	HDWX-013048	A	2	
300	••TIES MOUNTING BASE	ELEX-012803	D	1	
310	••NUT T-NUT DROP IN HANDLE 10-32	MECH-015561	B	1	
320	••SCREW, FHCS, 10-32 X 0.50 LG, BO	HDWX-013298	E	1	
330	••CONVEYOR SLIDE INTERMEDIATE	MACH-038967	-	4	
340	••CONVEYOR CHAIN S900 8" X 26'	MECH-015083	-	1	
350	•LEG ASSY - END	ASSY-024246	A	2	
360	••BRACKET UPPER - LEG	MECH-014978	A	2	
370	••LEVELING FT W/MTG 3/4-10 HOLE, VALU VG 511-02-P34L7	MECH-010596	E	2	
380	••NUT, HEX, JAM, 3/4-10, PL	HDWX-013056	E	4	
390	••WASHER, STD, 3/4, PL	HDWX-014310	D	4	
400	••BASE - END LEG	MECH-014596	B	1	
410	••BRACKET LOWER - LEG	MECH-014977	A	2	

ITEM	DESCRIPTION	PART NO.	REV	QTY	INFO
420	••EXTRUSION 8080 X 450mm	MECH-016160	A	1	
430	••NUT, HEX, NYLOCK, M8, SS	HDWX-013102	C	4	
440	••SCREW, SHCS, M8 X 25 LG, SS	HDWX-006739	A	4	
450	••NUT TNUT ECONOMY DBL M8 X 1.25	MECH-015582	G	8	
460	••SCREW, SHCS, M8 X 16 LG, SS	HDWX-014096	C	16	
470	••SCREW, BHCS, M8 X 16 LG, SS	HDWX-013251	J	4	
480	••NUT, T-NUT, SINGLE DROP-IN, M8, 80/20 40-1986	MECX-015584	B	4	
490	••TIE BASE ASSY FOR 40 SERIES	-	A	1	
500	••TIES MOUNTING BASE	ELEX-012803	D	1	
510	••NUT T-NUT DROP IN HANDLE 10-32	MECH-015561	B	1	
520	••SCREW, FHCS, 10-32 X 0.50 LG, BO	HDWX-013298	E	1	
530	•SPROCKET END - LEFT	ASSY-031488	A	1	
540	••SHAFT PLATE,FRONT LEFT,SC-LINEAR	MACH-027753	-	1	
550	••SHAFT PLATE,FRONT RIGHT,SC- LINEAR	MACH-027758	-	1	
560	••CONVEYOR SHAFT	MACH-030123	A	1	
570	••31095 BEARING BALL DBL SEAL	MECH-010290	E	2	
580	••RING, RETAINING, SMALLEY WHM-193	HDWX-032982	E	1	
590		MECH-010853	-	3	
600	••TIE BASE ASSY FOR 40 SERIES	-	A	4	
610	••CONVEYOR END PLATE	MACH-027812	A	1	
620	••SCREW, SHCS, M6 X 20 LG, SS	HDWX-013030	A	4	
630	••SCREW, SHCS, M8 X 30 LG, SS	HDWX-014099	B	8	
640	••COLLAR 2PC 1" WITH KEY	MECH-015197	A	2	
650	•SPROCKET END - RIGHT	ASSY-031489	A	1	
660	••SHAFT PLATE,FRONT LEFT,SC-LINEAR	MACH-027753	-	1	
670	••SHAFT PLATE,FRONT RIGHT,SC- LINEAR	MACH-027758	-	1	
680	••CONVEYOR SHAFT	MACH-030123	A	1	
690	••31095 BEARING BALL DBL SEAL	MECH-010290	E	2	
700	••RING, RETAINING, SMALLEY WHM-193	HDWX-032982	E	1	
710		MECH-010853	-	3	
720	••TIE BASE ASSY FOR 40 SERIES	-	A	4	
730	••CONVEYOR END PLATE	MACH-027812	A	1	
740	••SCREW, SHCS, M6 X 20 LG, SS	HDWX-013030	A	4	
750	••SCREW, SHCS, M8 X 30 LG, SS	HDWX-014099	B	8	
760	••COLLAR 2PC 1" WITH KEY	MECH-015197	A	2	
770	•GUARD ASSEMBLY - CONVEYOR CHAIN	ASSY-023978	A	4	
780	••CONVEYOR GUARD, SC-LINEAR	MECH-010557	A	1	
790	••SCREW, BHCS, M8 X 16 LG, SS	HDWX-013251	J	2	
800	••TNUT, ECONOMY, M8 X 1.25, 80/20 40-1981	MECX-033187	M	2	
810	•ENCLOSURE MOUNTING ASSEMBLY - CONVEYOR	ASSY-024394	A	1	
820	••40X40 EXTRUSION x 5.00 (127mm) LG	MACH-035318	B	4	

ITEM	DESCRIPTION	PART NO.	REV	QTY	INFO
830	••BRACKET 8020 2 HOLE INSIDE CORNER 40 SERIES 40-4302	MECH-015606	C	4	
840	••SCREW, BHCS, M8 X 16 LG, SS	HDWX-013251	J	4	
850	••FASTENING SET FOR BRACKET 8 40, ITEM 0.0.350.17	HDWX-033366		8	
860	••BRACKET, 90 DEGREE ANGLE, ITEM 0.0.196.87	MECH-014987	A	4	
870	•CONVEYOR ENCLOSURE ASSEMBLY SPEEDGLIDER	ASSY-023721	B	1	
880	••ENCLOSURE 12 x 12 x 6 (HOFFMAN CSD12126LG)	ELEC-033360	B	1	
890	••ENCLOSURE MTG PLATE - CONVEYOR	MACH-027780	B	2	
900	••SCREW, SHCS, M10 X 30 LG, SS	HDWX-014033	B	4	
910	••NUT, HEX, NYLOCK, M10, SS	HDWX-013089	B	4	
920	••WASHER, STD, M10, SS	HDWX-014325	D	4	
930	••C-P1212, 32757 Encl Concept Panel 10.2X10.2	ELEC-012374	B	1	
940	•RAIL ASSY END TRANSFER	ASSY-025414	A	1	
950	••RAIL BRACKET ASSY	ASSY-023151	A	4	
960	••SCREW BHCS, 5/16-18 X 0.63 BO	HDWX-013217	J	1	
970	••WASHER, STD, 5/16, PL	HDWX-014315	D	1	
980	••32186 ROD ADJ SS 1/2DIA X 10	MECH-010733	C	1	
990	••30536 ROD ADJ 1/2DIA X 5	MECH-010734	C	1	
1000	••31202 CLAMP CROSS .50 X .50 PLASTIC	MECH-010376	D	1	
1010	••SCREW, HEX, 5/16-18 X 0.75 LG, PL	HDWX-013529	D	1	
1020	••BRACKET, 40 SERIES, 4 HOLE INSIDE GUSSET	MECH-010476	B	1	
1030	••SCREW, BHCS, M8 X 16 LG, SS	HDWX-013251	J	2	
1040	••NUT, T-NUT, SINGLE DROP-IN, M8, 80/20 40-1986	MECX-015584	B	2	
1050	••RAIL END TRANSFER	MACH-029830	A	2	
1060	••00377 PIN EXPANSION 3/32 X 0.25	MECH-034227	C	1	
1070	•RAIL ASSY DUAL - END TRANSFER	ASSY-025416	A	1	
1080	••RAIL END TRANSFER	MACH-029830	A	2	
1090	••00377 PIN EXPANSION 3/32 X 0.25	MECH-034227	C	1	
1100	••WASHER, STD, 5/16, PL	HDWX-014315	D	4	
1110	••30536 ROD ADJ 1/2DIA X 5	MECH-010734	C	4	
1120	••31202 CLAMP CROSS .50 X .50 PLASTIC	MECH-010376	D	4	
1130	••SCREW, HEX, 5/16-18 X 0.75 LG, PL	HDWX-013529	D	4	
1140	•RAIL ASSY SIDE TRANSFER	ASSY-025415	B	1	
1150	••RAIL BRACKET ASSY	ASSY-023151	A	4	
1160	••SCREW BHCS, 5/16-18 X 0.63 BO	HDWX-013217	J	1	
1170	••WASHER, STD, 5/16, PL	HDWX-014315	D	1	
1180	••32186 ROD ADJ SS 1/2DIA X 10	MECH-010733	C	1	
1190	••30536 ROD ADJ 1/2DIA X 5	MECH-010734	C	1	

ITEM	DESCRIPTION	PART NO.	REV	QTY	INFO
1200	•••31202 CLAMP CROSS .50 X .50 PLASTIC	MECH-010376	D	1	
1210	•••SCREW, HEX, 5/16-18 X 0.75 LG, PL	HDWX-013529	D	1	
1220	•••BRACKET,40 SERIES, 4 HOLE INSIDE GUSSET	MECH-010476	B	1	
1230	•••SCREW, BHCS, M8 X 16 LG, SS	HDWX-013251	J	2	
1240	•••NUT, T-NUT, SINGLE DROP-IN, M8, 80/20 40-1986	MECX-015584	B	2	
1250	••RAIL OUTBOARD SIDE TRANSFER 46" X 24" LG	MACH-029804	C	1	
1260	••RAIL OUTBOARD SIDE TRANSFER 52" X 24" LG	MACH-029805		1	
1270	•••31127 RAIL GUIDE ALUM MUST BE IN A TUBE	MECX-034908	A	1	
1280	•••00377 PIN EXPANSION 3/32 X 0.25	MECH-034227	C	1	
1290	•RAIL ASSY DUAL - SIDE TRANSFER	ASSY-025417	B	1	
1300	••RAIL OUTBOARD SIDE TRANSFER 46" X 24" LG	MACH-029804	C	1	
1310	••RAIL OUTBOARD SIDE TRANSFER 52" X 24" LG	MACH-029805		1	
1320	•••31127 RAIL GUIDE ALUM MUST BE IN A TUBE	MECX-034908	A	1	
1330	•••00377 PIN EXPANSION 3/32 X 0.25	MECH-034227	C	1	
1340	••WASHER, STD, 5/16, PL	HDWX-014315	D	4	
1350	••30536 ROD ADJ 1/2DIA X 5	MECH-010734	C	4	
1360	••31202 CLAMP CROSS .50 X .50 PLASTIC	MECH-010376	D	4	
1370	••SCREW, HEX, 5/16-18 X 0.75 LG, PL	HDWX-013529	D	4	
1380	•ENCODER ASSY CONVEYOR	ASSY-032504	A	1	
1390	••ENCODER DYNAPAR, HS2020488144J, SEALED HOLLOW SHAFT ENCODER, 2048 RESOLUTION, 5/8"ID DIFFERENTIAL BIDIRECTIONAL 5-26V, 8 PIN M12 CONNECTOR	ELEC-040777	B	1	
1400	••Cable, Turck WKC8T-10/S618, M12 quick connect, 8 pin, Female, 90 degree, 10M, Encoder-cable	ELEC-040021	A	1	
1410	••Series HS20 Dynapar Encoder Tether & Hardware included with Encoder	ELEC-040777 - Encoder Tether	B	1	
1420	••SCREW, BHCS, M8 X 25 LG, SS	HDWX-013254	D	1	
1430	••SPACER, UNTHREADED - 3/4" OD, 5/8" LG, FOR 5/16" SCREW, AL - MCMaster CARR 92510A801	MECH-042325	A	1	
1440	•DEADPLATE ASSY - 8"	ASSY-023488	A	1	
1450	••MOUNT, DEADPLATE, END TRANSFER	MACH-027210	A	1	
1460	••UPRIGHT, DEADPLATE, END TRANSFER	MACH-031692	A	1	
1470	••DEADPLATE 8"	MECH-015418	A	1	

ITEM	DESCRIPTION	PART NO.	REV	QTY	INFO
1480	••WASHER, LOCK, 1/4, PL	HDWX-014257	C	3	
1490	••WASHER, SAE, 1/4, PL	HDWX-014293	C	3	
1500	••SCREW, FHCS, 10-32 X 0.63 LG, BO	HDWX-013300	B	2	
1510	••SCREW, SHCS, 1/4-20 X 1.00 LG, SS	HDWX-013853	B	3	