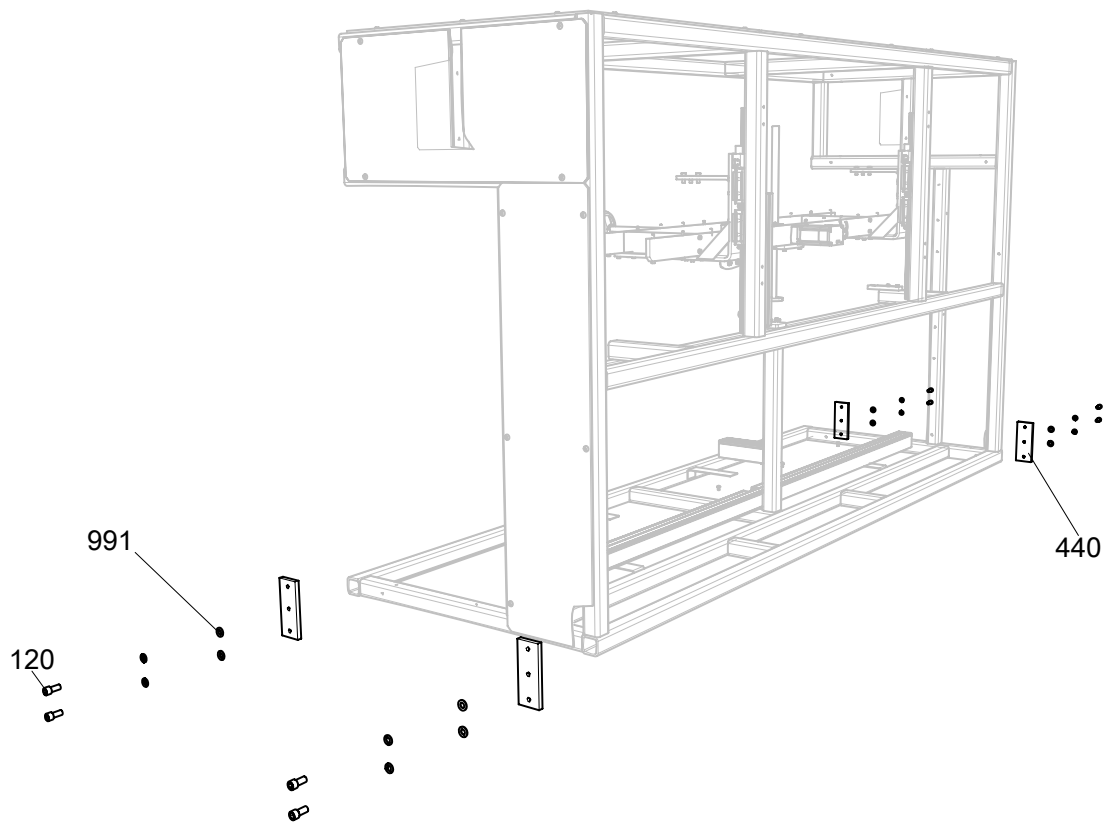
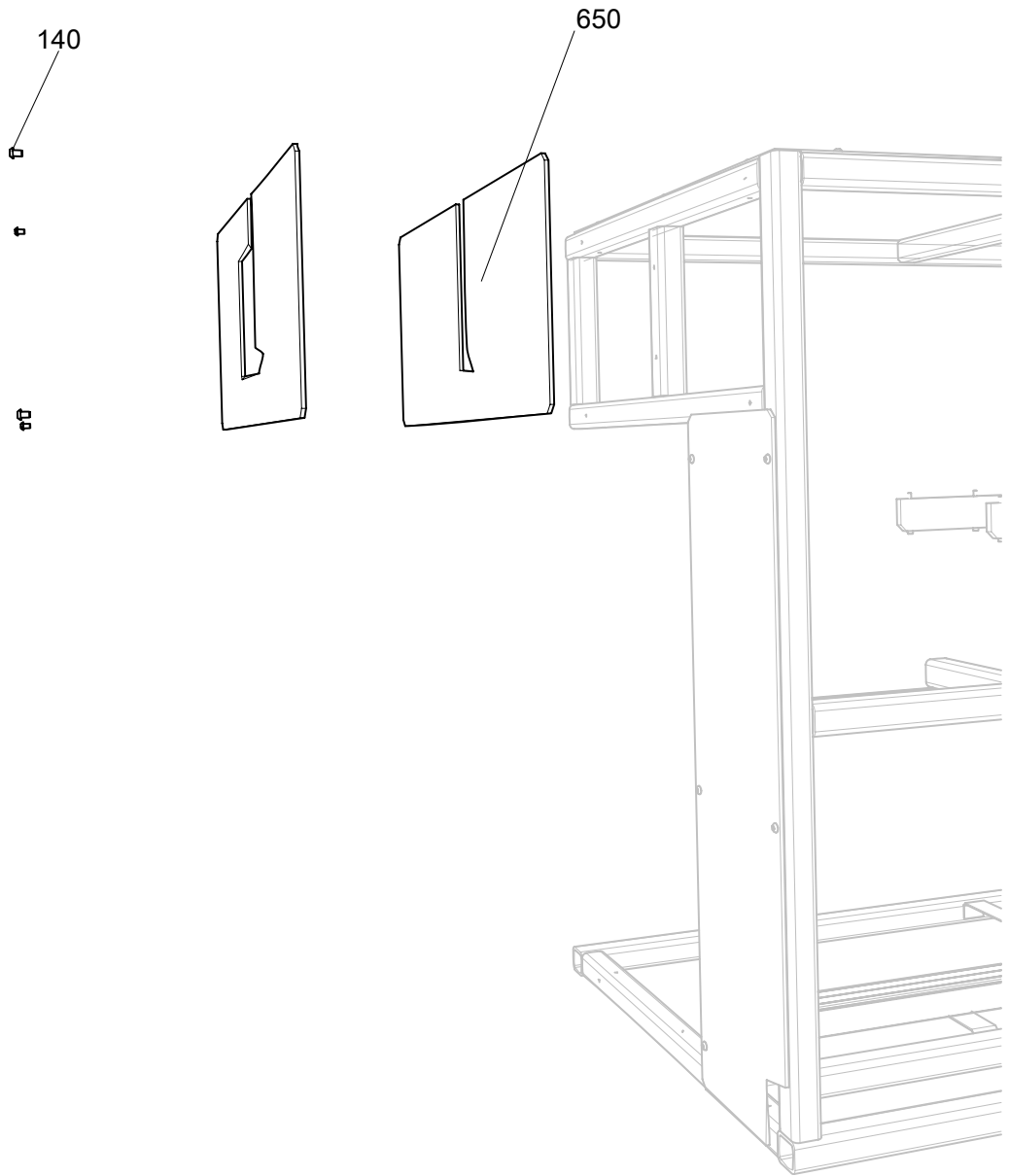


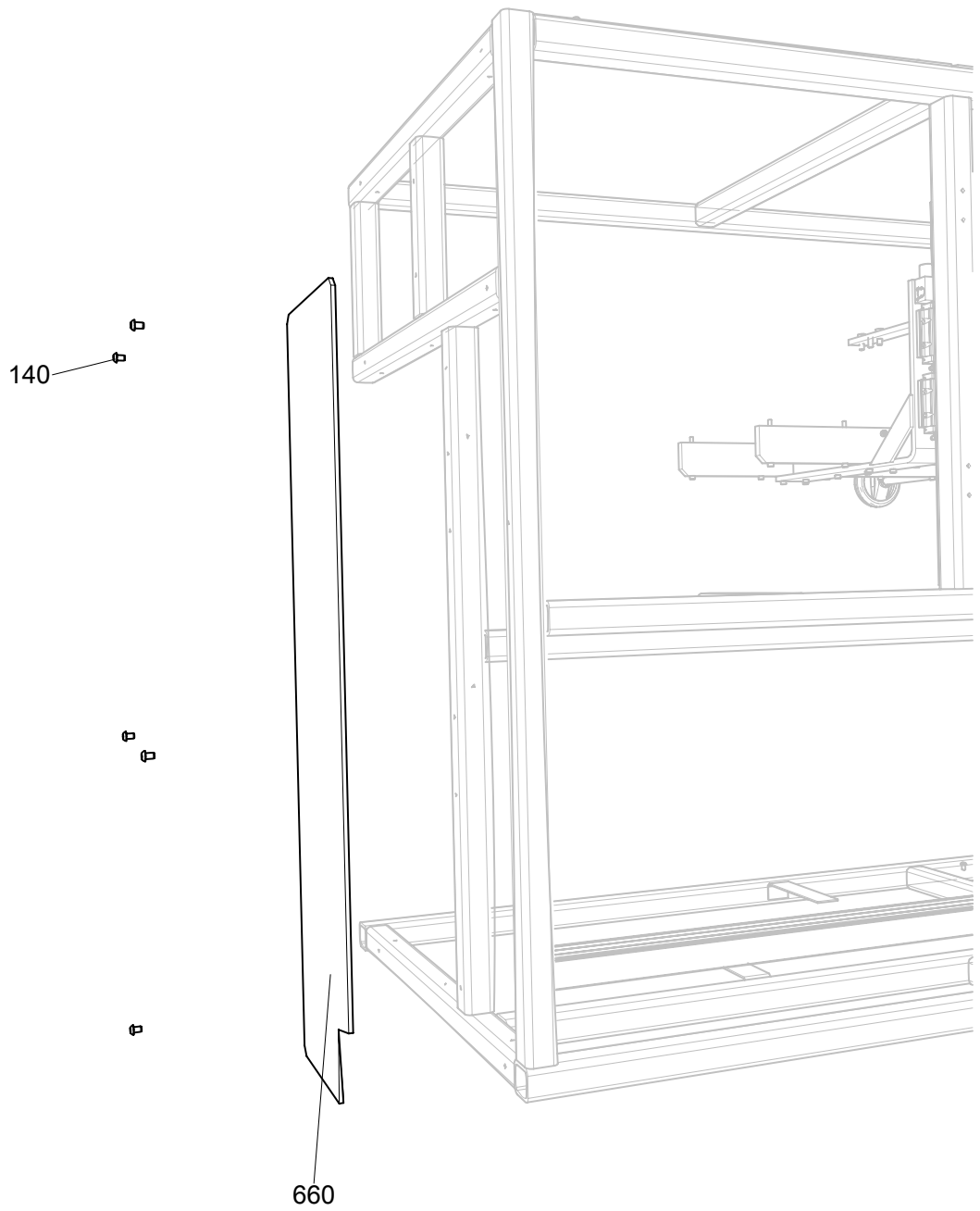
Flex Pitch Frame Assembly



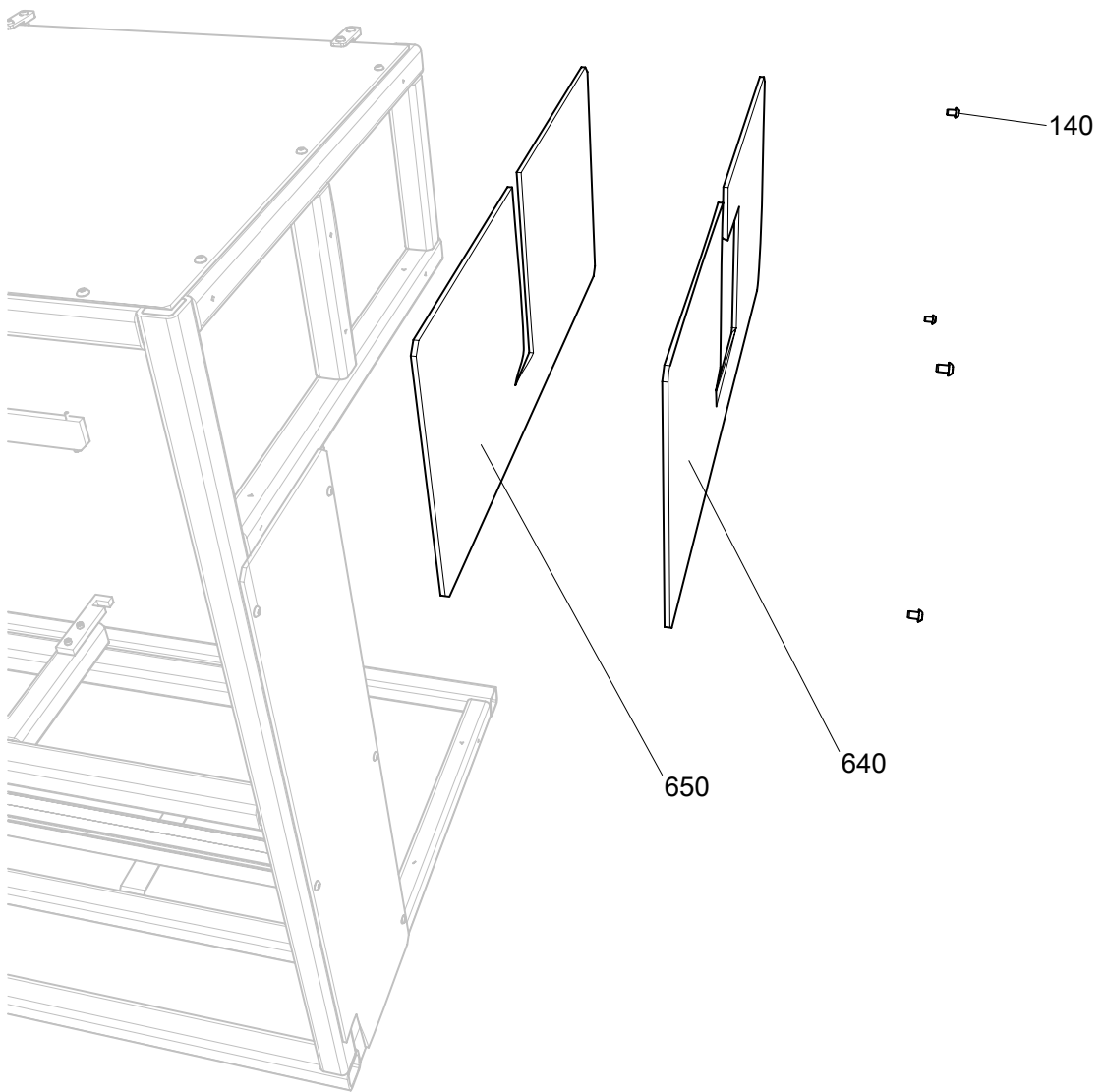
Leg Attachment



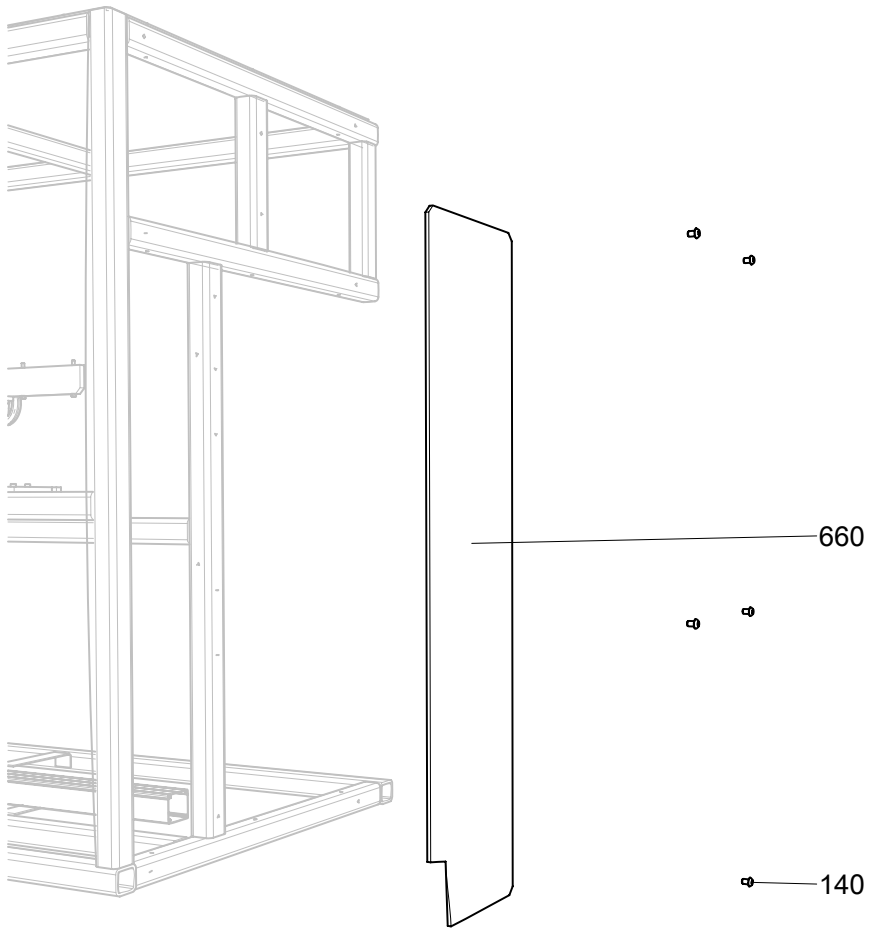
Left Top Window



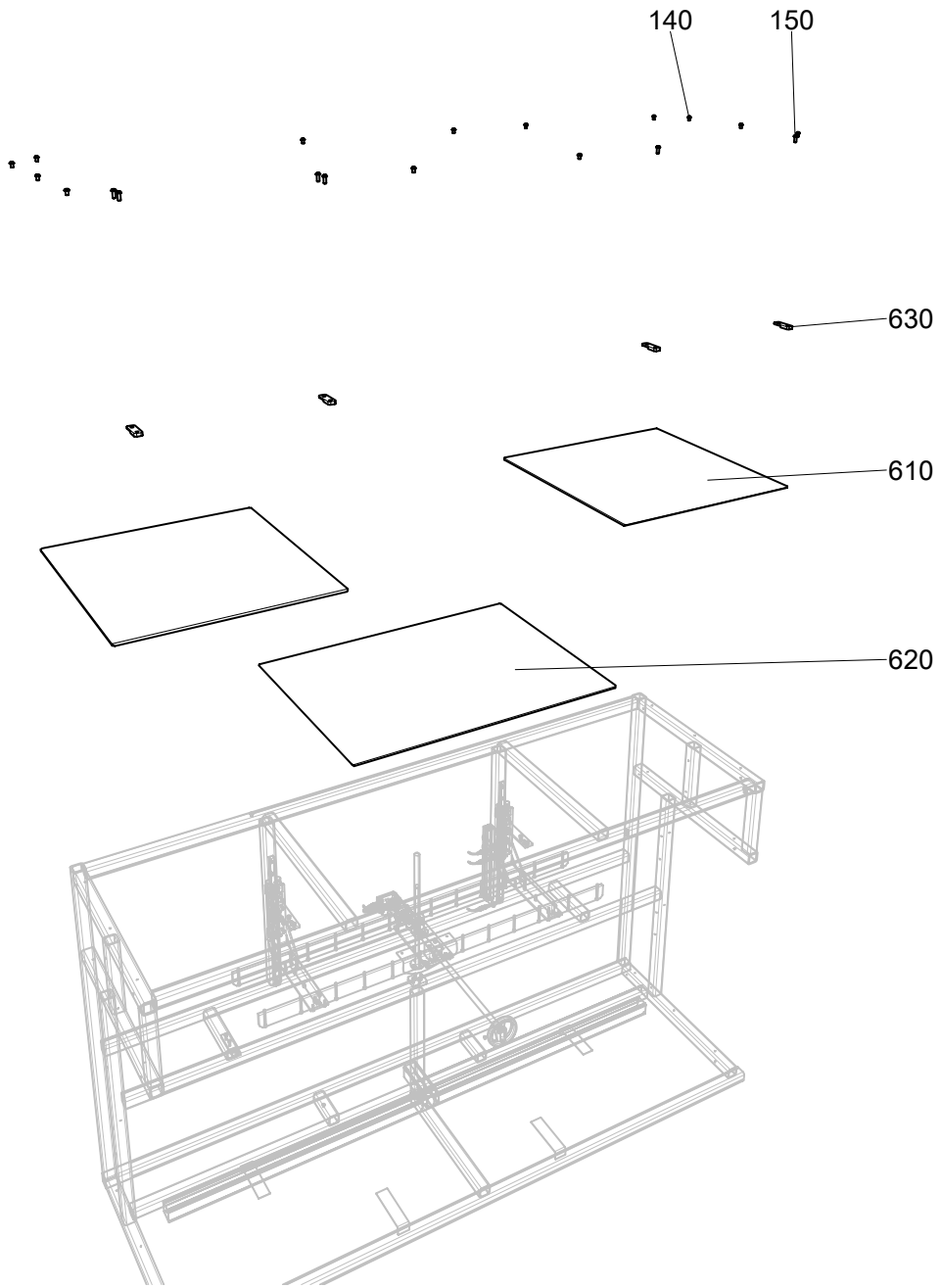
Window Side Rear



Right Top Window

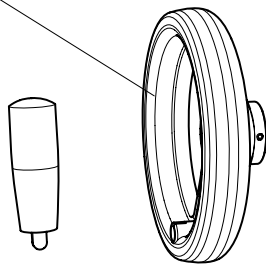


Right Rear Window

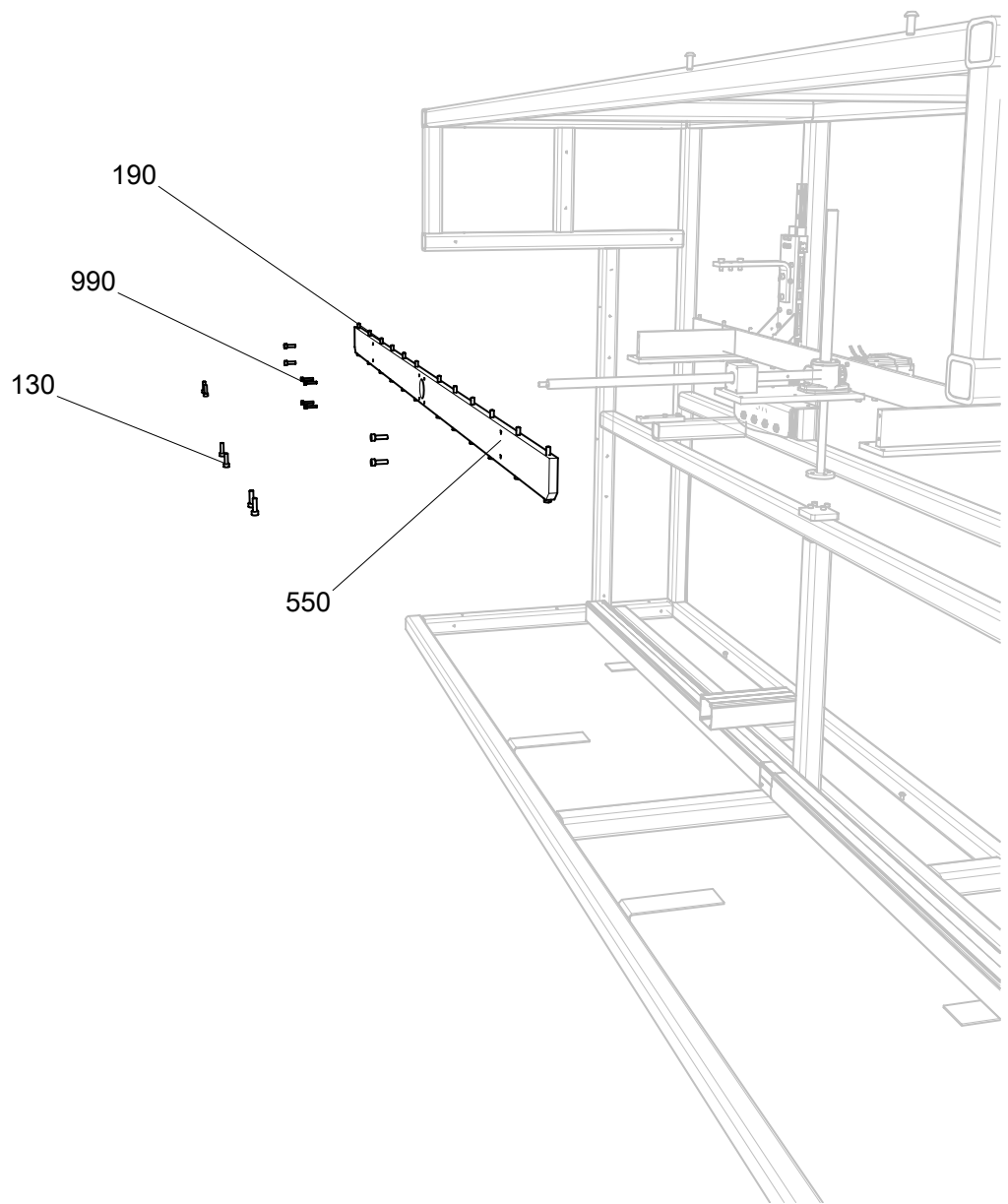


Top Windows

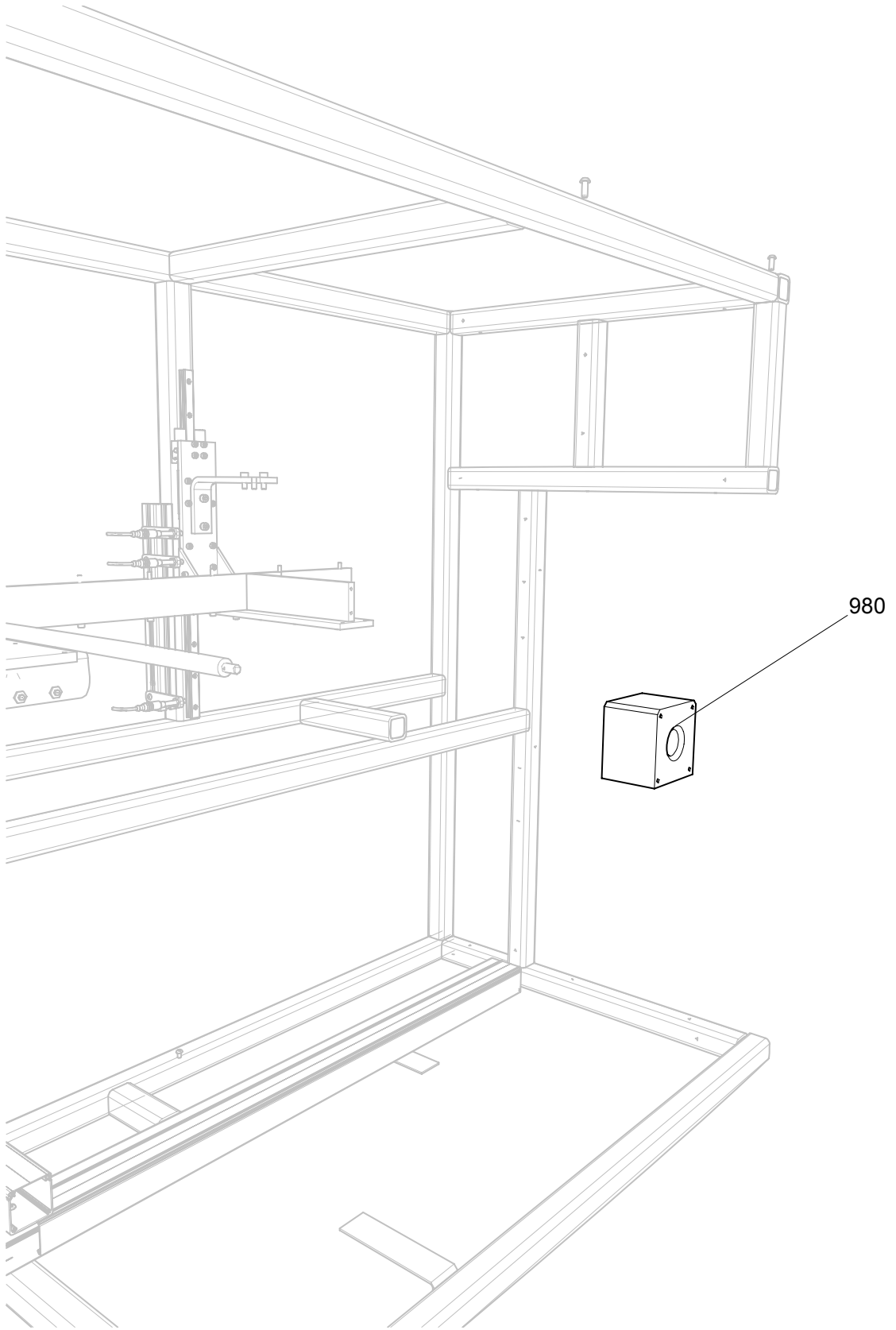
940



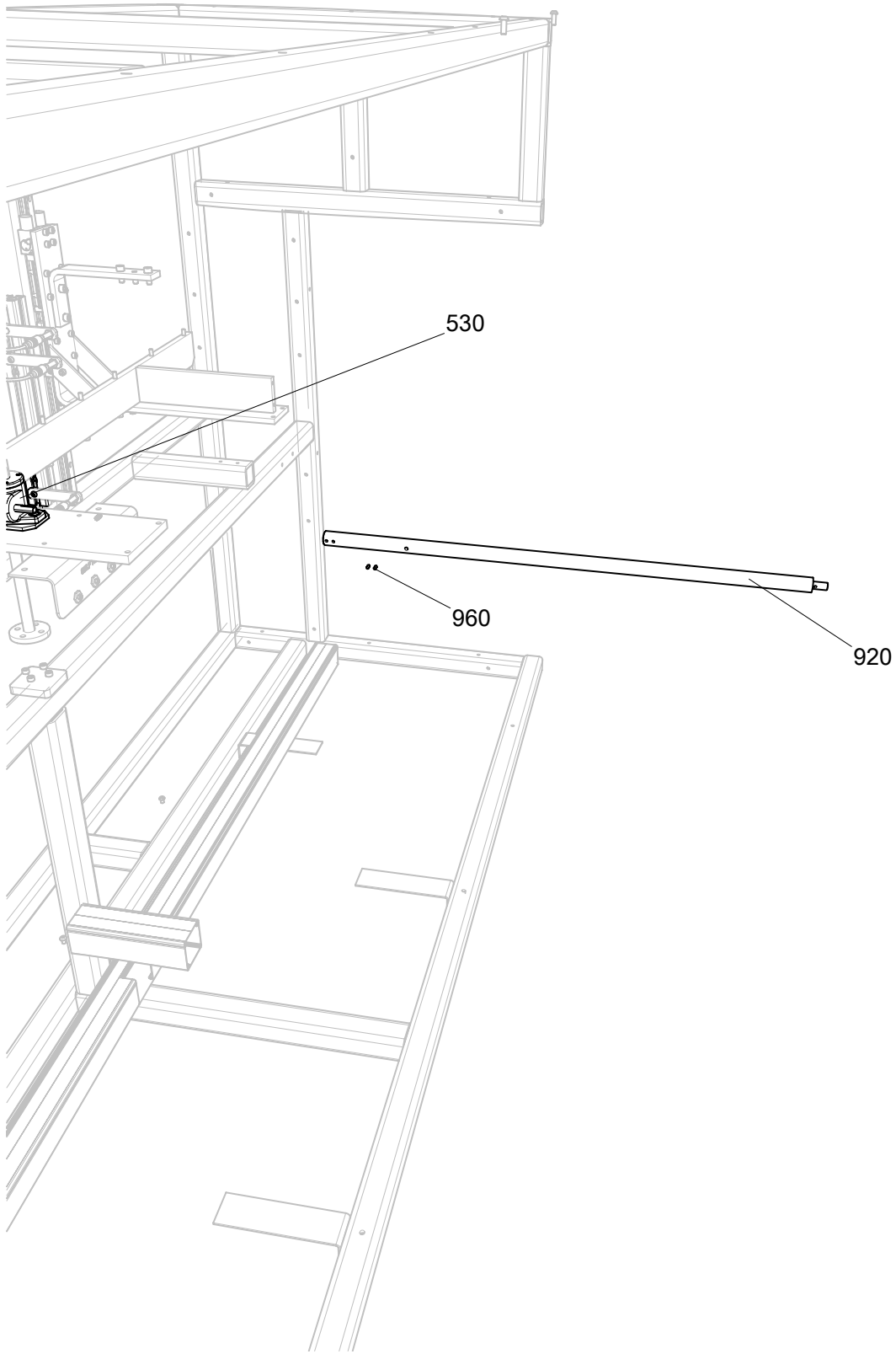
Hand Wheel with Folding Handle



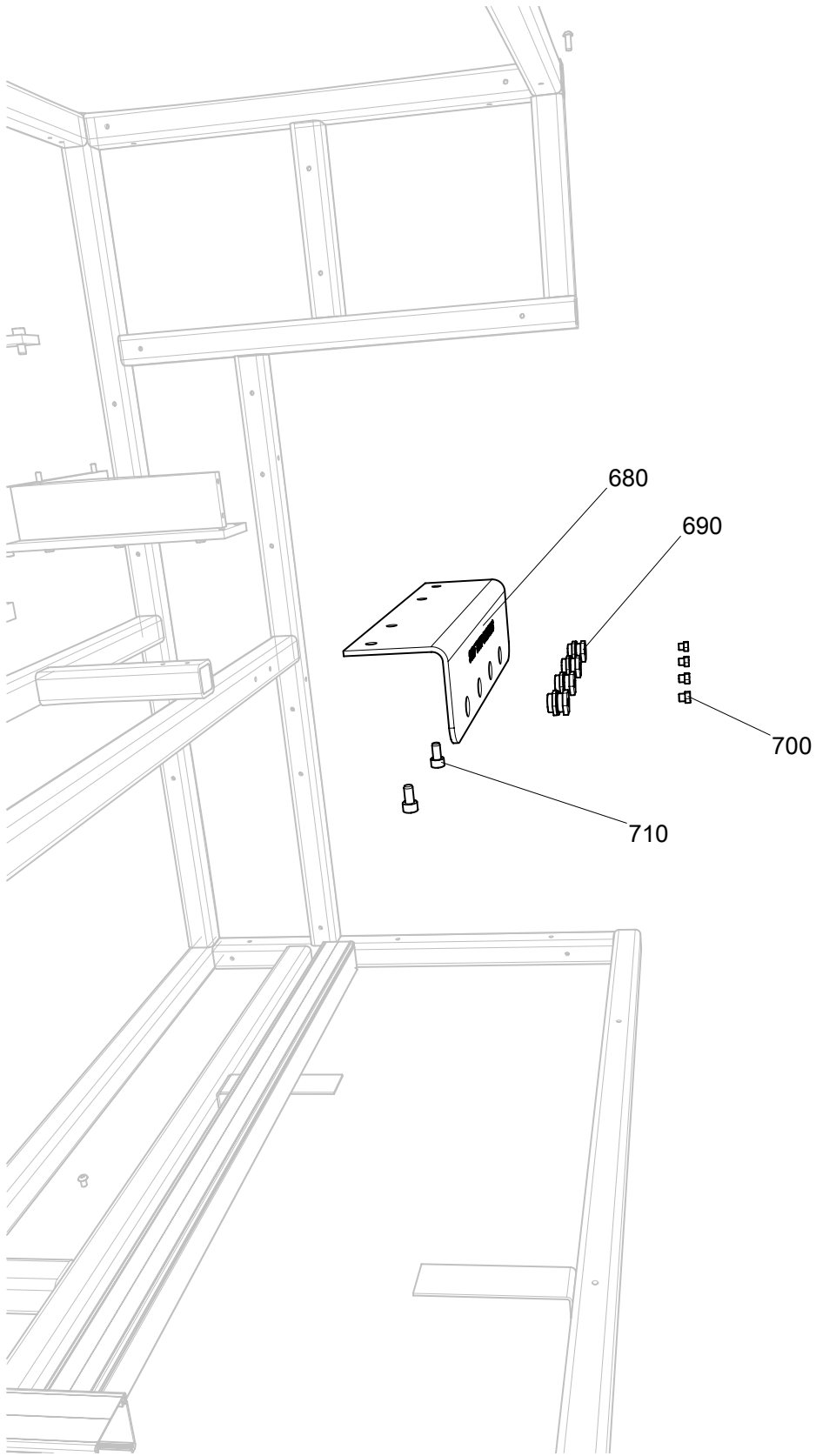
Pitch Slide Support



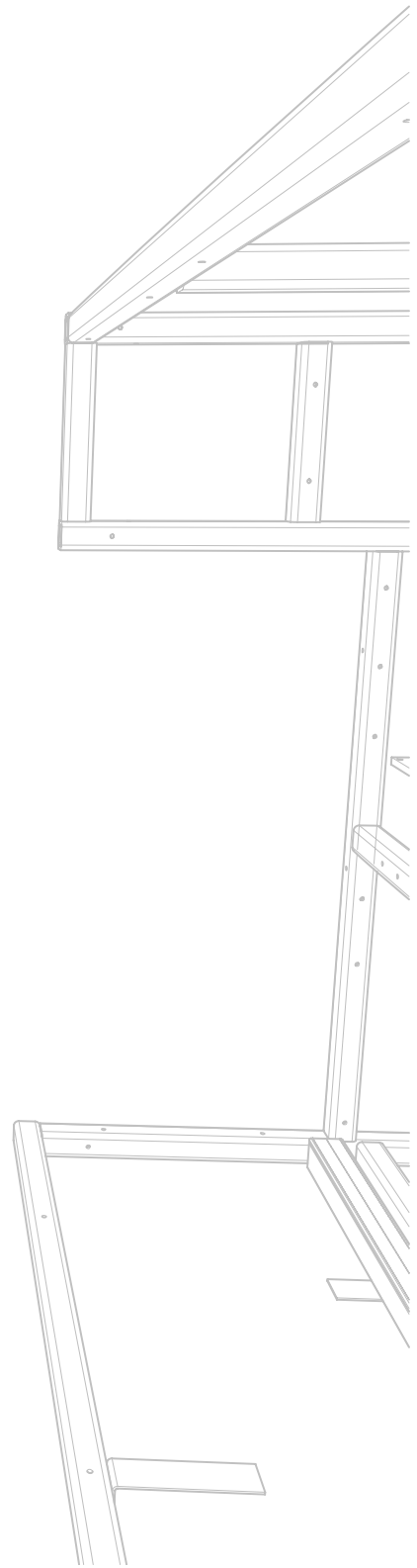
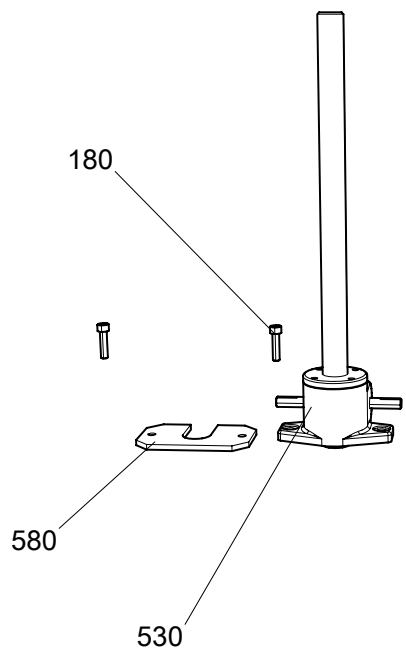
Guide Block



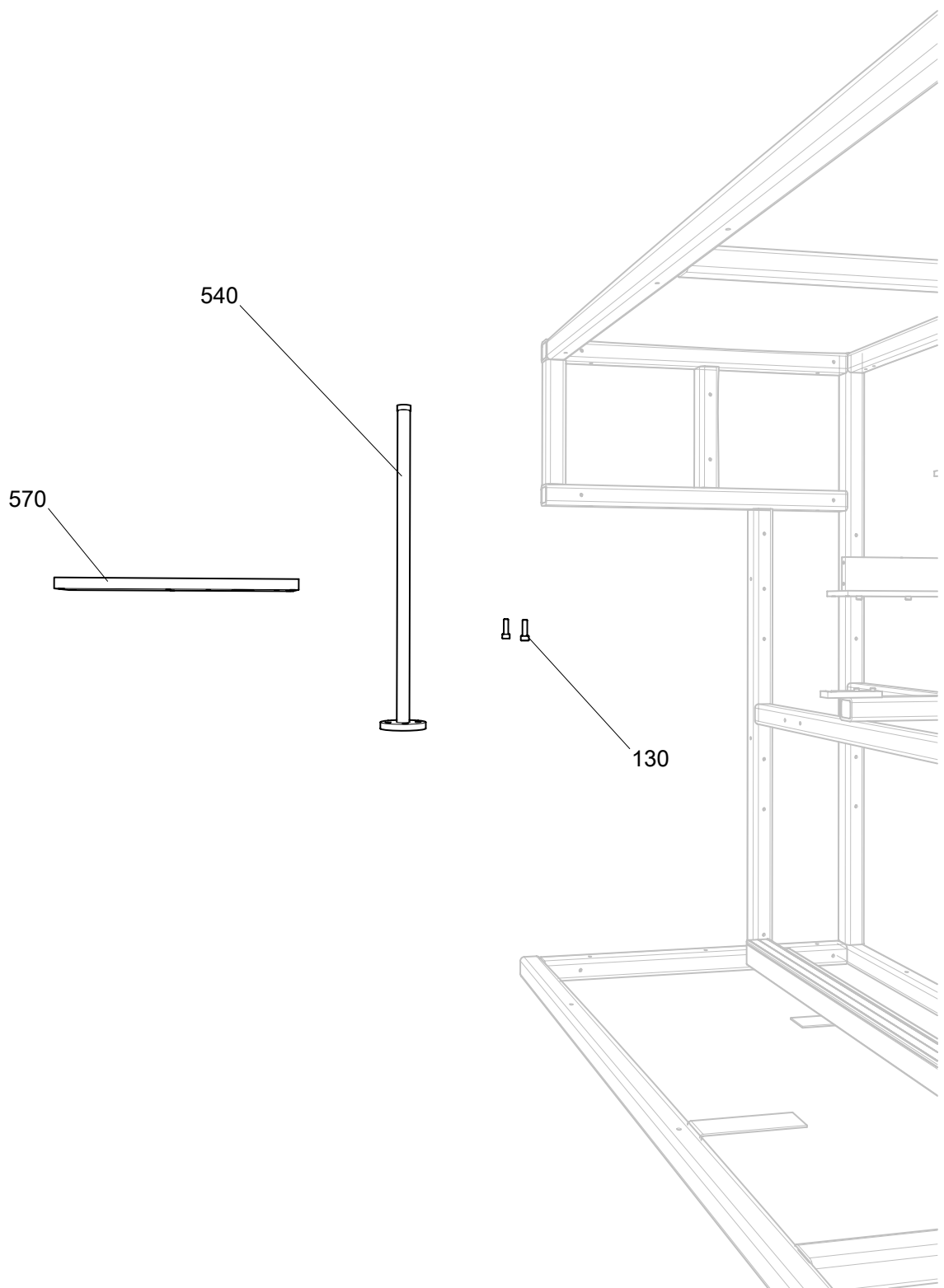
Rod and Dowel Pins



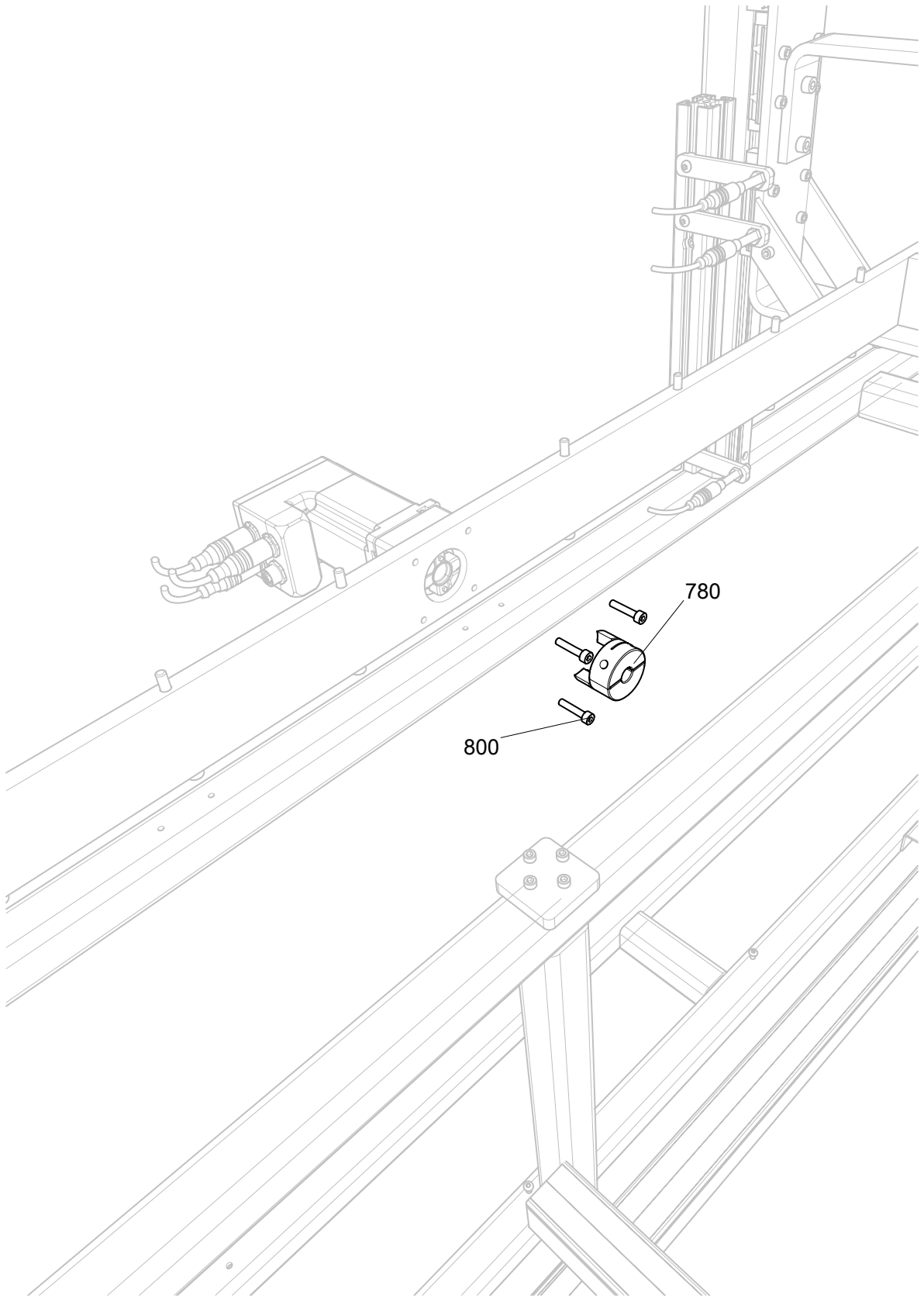
Self Test Orifice Assembly



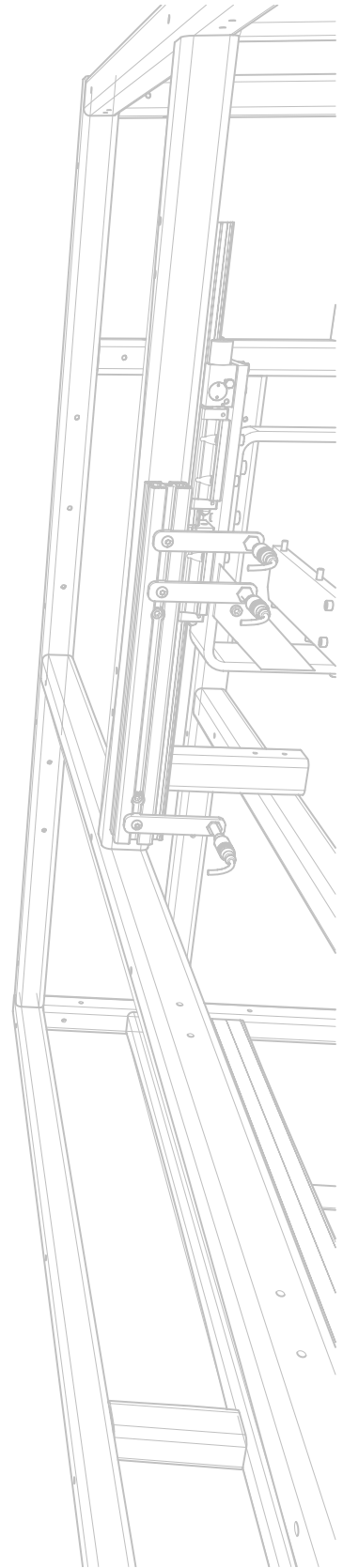
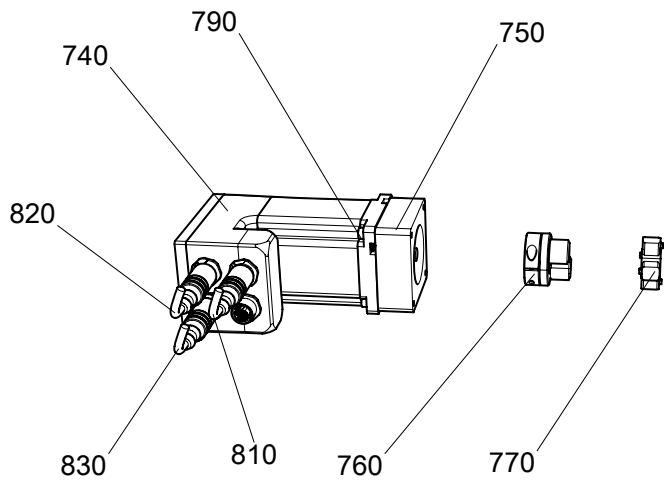
Inverted Jack



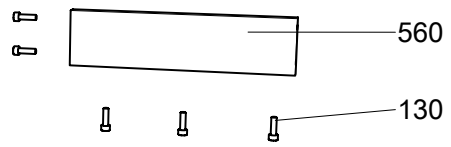
Inverted Plate



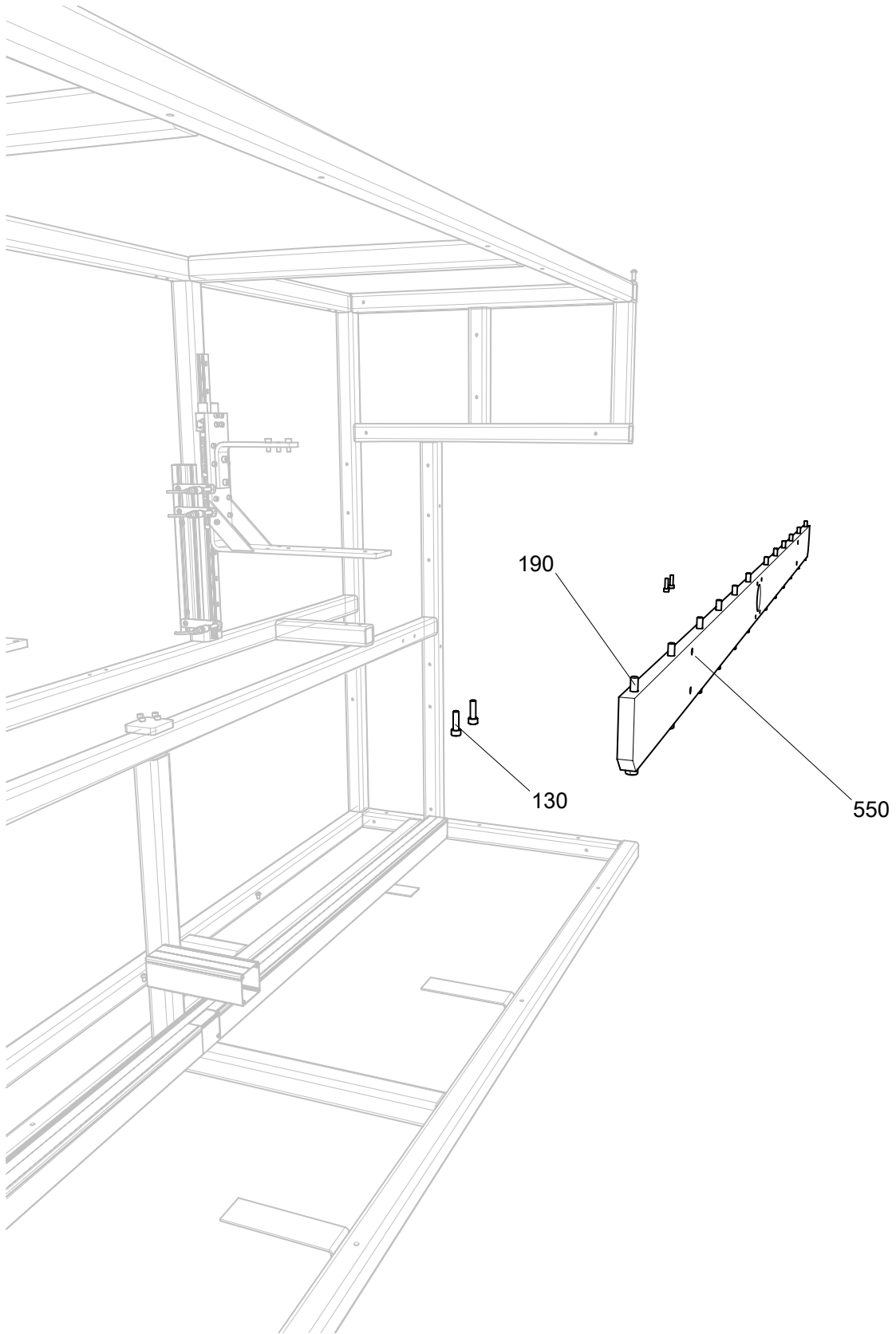
Motor Coupling and Mounting Bolts



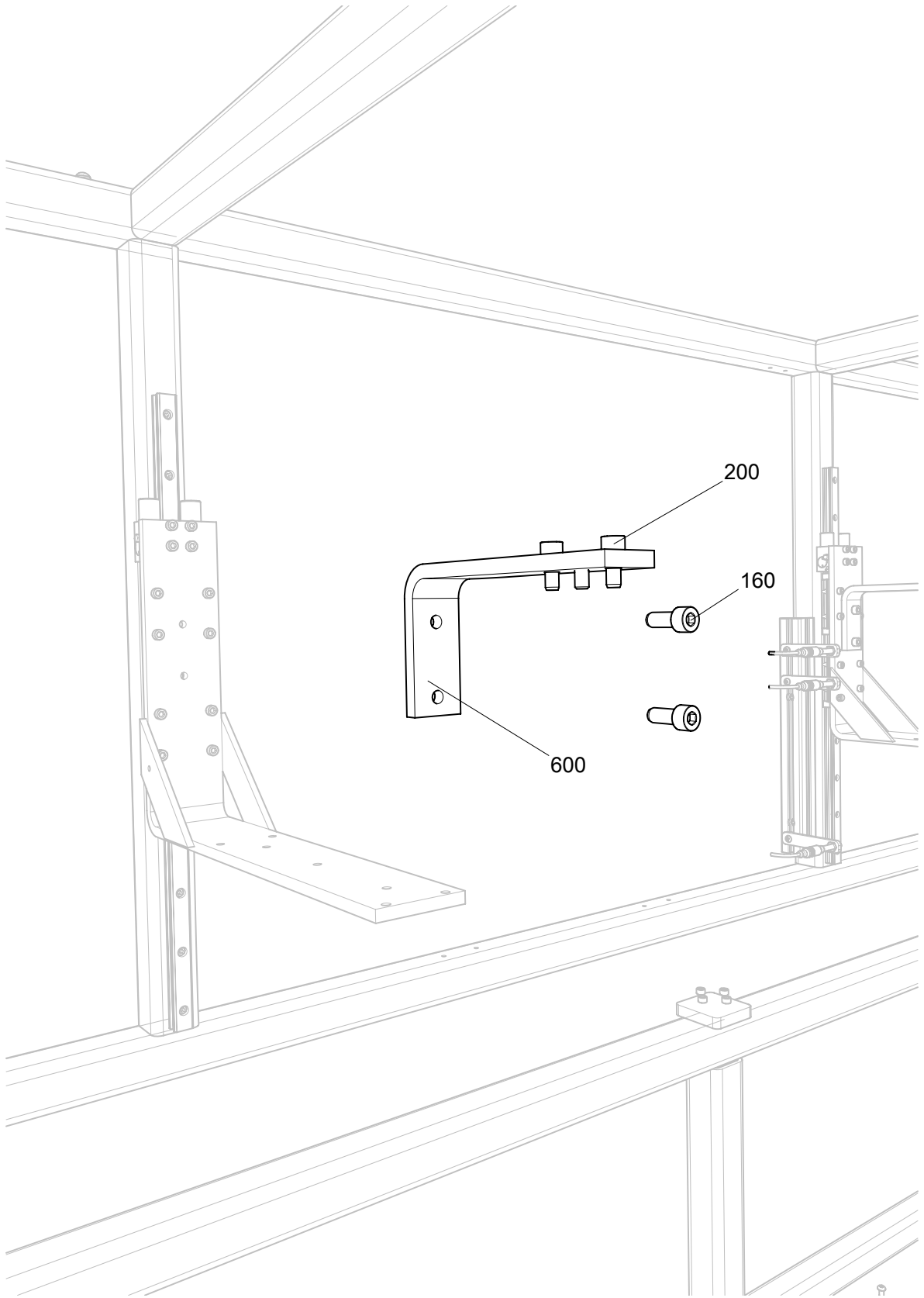
DC Motor



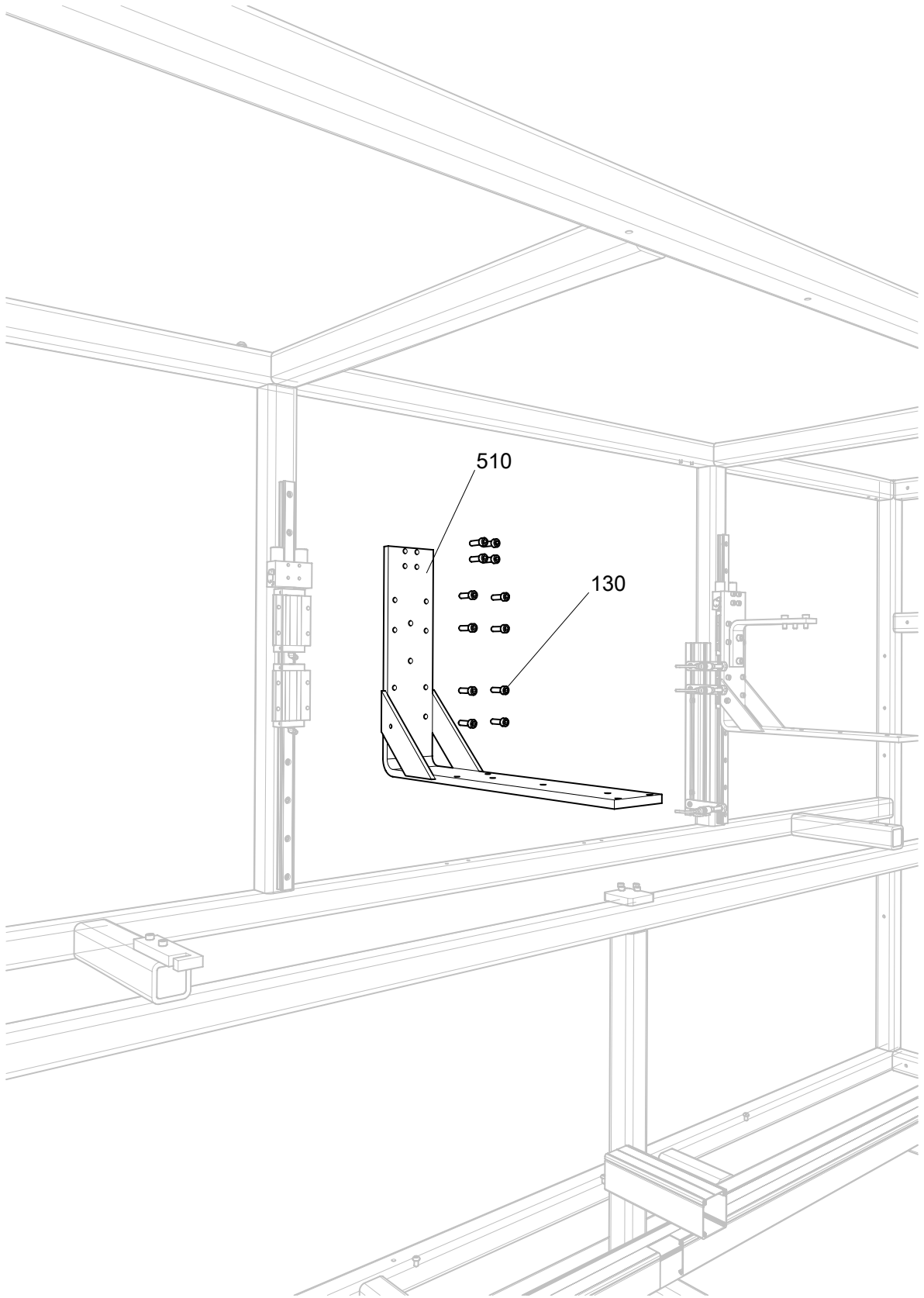
Slide Support



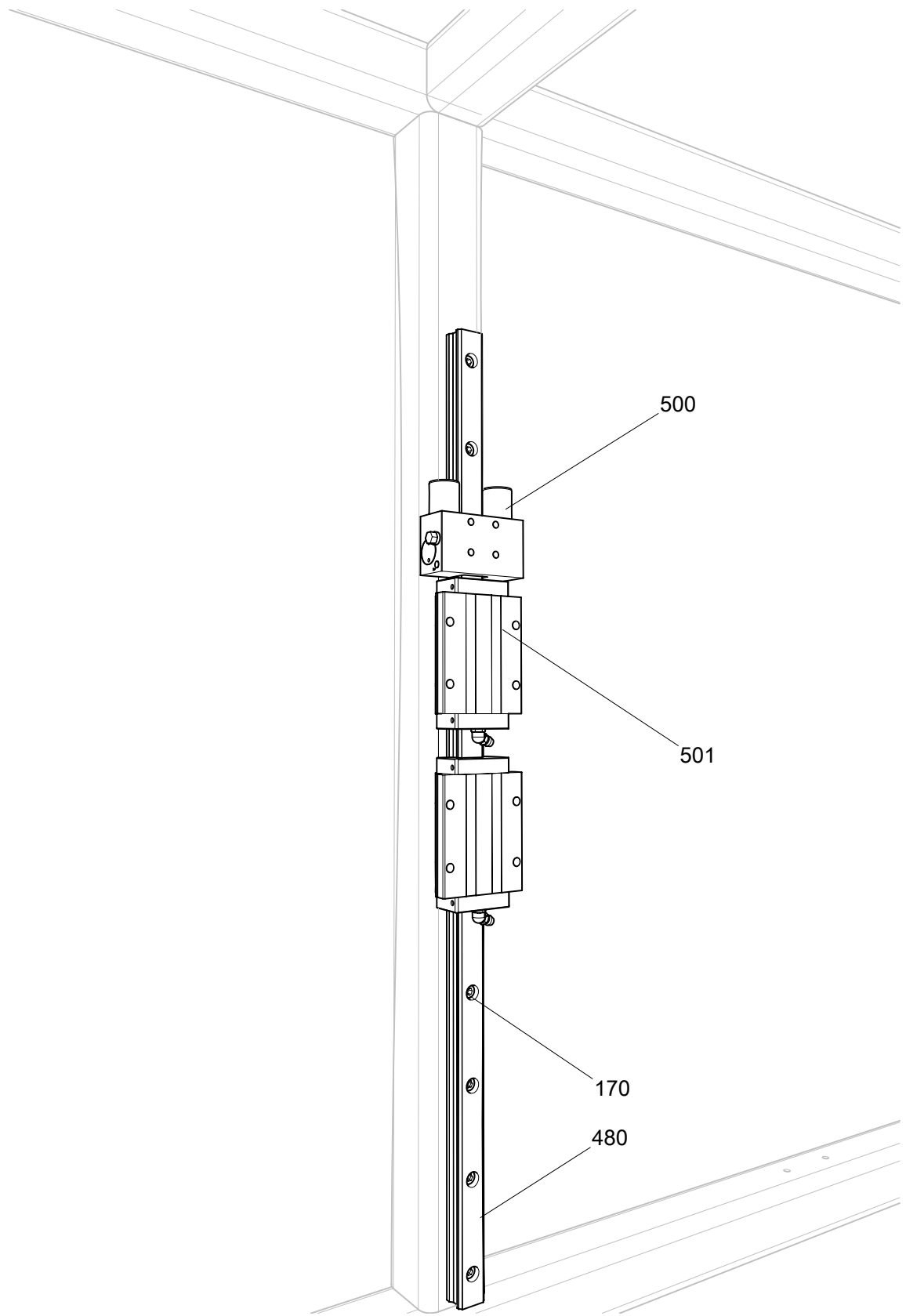
Pitch Slide Support Bar



Slide Upper Support Arm



Slide Lower Support Arm



Slide Rail

| ITEM | DESCRIPTION | PART NO. | REV | QTY | INFO |
|------|---|------------------|-----|-----|------|
| 10 | FLEX PITCH 2-4.10 FRAME ASSEMBLY | ASSY-023867 | A | 1 | |
| 20 | •FLEX PITCH 2-4.10 LEG ASSY - RANGE 36"-41" | ASSY-024248 | A | 2 | |
| 30 | ••LEG ASSY WELDMENT | MECH-031763 | A | 1 | |
| 40 | •••LEG BRACE A | MECH-031763-A | A | 1 | |
| 50 | •••BRACE PLATE B | MECH-031763-B | A | 2 | |
| 60 | •••C3x5 CHANNEL (3"DEPTH x 1.50" FLANGE) | MECH-031763-C | A | 2 | |
| 70 | •••GUSSET D | MECH-031763-D | A | 4 | |
| 80 | ••LEVELER, ARTICULATING, 1-1/4"-7 THREADED, REXNORD 10309408 | MECH-035125 | A | 2 | |
| 90 | ••CASTER, SWIVEL, ESD, 4 X 1-1/4, APEX CCAPEX-ESD-425S- TL | MECH-015081 | A | 2 | |
| 100 | ••NUT, HEX, 1-1/4-7, STL | HDWX-033405 | | 4 | |
| 110 | | HDWX-035172 | | 8 | |
| 120 | •SCREW, SHCS, M12 X 25 LG, SS | HDWX-014043 | A | 8 | |
| 130 | •SCREW, SHCS, M6 X 20 LG, SS | HDWX-013030 | A | 56 | |
| 140 | •SCREW, BHCS, M8 X 12 LG, SS | HDWX-013249 | G | 32 | |
| 150 | •SCREW, BHCS, M8 X 20 LG, SS | HDWX-013252 | C | 8 | |
| 160 | •SCREW, SHCS, M8 X 20 LG, SS | HDWX-014097 | H | 8 | |
| 170 | •SCREW, SHCS, M5 X 14 LG, SS | HDWX-014073 | D | 22 | |
| 180 | •SCREW, SHCS, M6 X 25 LG, SS | HDWX-014086 | E | 2 | |
| 190 | •SCREW, MCMMASTER CARR, 91292A816, M6 x 75mm lg. SHCS - SOLD IN PACKETS OF (10) | MECX-038200 | A | 24 | |
| 200 | •8mm x 20mm Dowel | 8mm x 20mm Dowel | | 2 | |
| 210 | •Wireway For Main Enclosure, Flex Pitch 2-4.10 | ASSY-035996 | - | 1 | |
| 220 | ••Conduit Profile U 60x60 SE, natural, ITEM 0.0.487.37 | ELEC-035997 | - | 2 | |
| 230 | ••Lid Profile D60 E, natural, ITEM 0.0.451.43 | ELEC-035998 | - | 2 | |
| 240 | ••SCREW, BHCS, M6 X 10 LG, SS | HDWX-013239 | D | 5 | |
| 250 | •FP2.1 FLEX PITCH TESTER LARGE FRAME | MACH-040047 | A | 1 | |
| 260 | ••2 x 2 x 1/4w x 103.00 | TUBE L-A1 | A | 1 | |
| 270 | ••2 x 2 x 1/4w x 103.00 | TUBE L-A2 | A | 1 | |
| 280 | ••2 x 2 x 1/4w x 103.00 | TUBE L-A3 | A | 1 | |
| 290 | ••2 x 2 x 1/4w x 103.00 | TUBE L-A4 | A | 1 | |
| 300 | ••2 x 2 x 1/4w x 103.00 | TUBE L-A5 | A | 1 | |
| 310 | ••2 x 2 x 1/4w x 31.50 | TUBE L-B2 | A | 6 | |
| 320 | ••2 x 2 x 1/4w x 60.00 | TUBE L-C1 | A | 2 | |
| 330 | ••2 x 2 x 1/4w x 107.00 | TUBE L- D | A | 1 | |
| 340 | ••2 x 2 x 1/4w x 107.00 | TUBE L-D2 | A | 1 | |
| 350 | ••2 x 2 x 1/4w x 44.00 | TUBE L-E1 | A | 2 | |
| 360 | ••2 x 2 x 1/4w x 12.00 | TUBE L-F | A | 2 | |
| 370 | ••2 x 2 x 1/4w x 12.00 | TUBE L-F2 | A | 2 | |

| ITEM | DESCRIPTION | PART NO. | REV | QTY | INFO |
|------|---|---|-----|-----|------|
| 380 | ••2 x 2 x 1/4w x 31.50 | TUBE L-G1 | A | 2 | |
| 390 | ••2 x 2 x 1/4w x 10.00 | TUBE L-H | A | 2 | |
| 400 | ••2 x 2 x 1/4w x 22.50 | TUBE L-J | A | 1 | |
| 410 | ••2 x 2 x 1/4w x 23.50 | TUBE L-K | A | 1 | |
| 420 | ••.50 x 2.50 x 2.50 | PLATE L-I | A | 1 | |
| 430 | ••.12 x 1.50 x 1.50 | PLATE L-N | A | 8 | |
| 440 | ••.50 x 2.50 x 6.50 | PLATE L-P | A | 4 | |
| 450 | ••.12 x 2.00 x 9.12 | BRKT L-Q | A | 4 | |
| 460 | ••2 x 2 x 1/4w x 29.50 | TUBE L-R | A | 2 | |
| 470 | ••2 x 2 x 1/4w x 6.00 | TUBE L-Z | A | 2 | |
| 480 | •RAIL, THK, SHS20-640L(GK), SIZE 20 RAIL X 640mm LG | MECH-038197 | A | 2 | |
| 490 | •BEARING, THK, SHS20LC1SS(GK), LM GUIDE BLOCK SIZE 20 (LONG) | MECH-038198 | A | 4 | |
| 500 | •CLAMP, ZIMMER, MKS2001A, SIZE 20 THK RAIL CLAMP (PNEU) | MECH-038199 | A | 2 | |
| 501 | | SHS20LC2SS-580L_G20_0_B-M6F_0_98_0_0(2)^ THK LM Block - SHS20LC2SS-1/_SHS20LCSSB-M6F Slide25-55^ SHS20LC2SS-580L_G20_0_B-M6F_0_98_0_0(2)_THK LM Block - SHS20LC2SS-2-solid1 (1) | | | |
| 510 | •FP2.1 SLIDE LOWER SUPPORT ARM | MACH-038173 | A | 2 | |
| 520 | •SCREW JACK, DAYTON-JOYCE, WJ500 I2S-12-STDH-H2, 500 lbs. INVERTED SCREW JACK | MECH-038202 | A | 1 | |
| 530 | ••INVERTED JACK | JOYCE JACK BODY | A | 1 | |
| 540 | ••INVERTED JACK | JOYCE JACK STEM | A | 1 | |
| 550 | •FP 10-PITCH SLIDE SUPPORT BAR (LG FRAME) | MACH-034953 | - | 2 | |
| 560 | •FP2.1 SLIDE SUPPORT RIB | MACH-038175 | A | 2 | |
| 570 | •FP2.1 INVERTED JACK MOUNT PLATE | MACH-038176 | A | 1 | |
| 580 | •FP2.1 INVERTED JACK SCREW RISER | MACH-038177 | A | 1 | |
| 590 | •FP2.1 SCALE INDICATOR | MACH-039046 | A | 1 | |
| 600 | •FP2.1 SLIDE UPPER SUPPORT ARM | MACH-038178 | A | 2 | |
| 610 | •FP 10-PITCH SIDE TOP PANEL | MACH-040211 | A | 2 | |
| 620 | •FP 10-PITCH TOP MID PANEL | MACH-040212 | A | 1 | |
| 630 | •BRACKET, GUARD MOUNT - FRONT | MACH-038872 | A | 4 | |
| 640 | •FP2.1 WINDOW OPP SIDE | MACH-039387 | A | 2 | |
| 650 | •FP2.1 SIDE WINDOW | MACH-038179 | A | 2 | |
| 660 | •FP2.1 WINDOW SIDE REAR | MACH-038180 | A | 2 | |
| 670 | •FP 2-4 SELF TEST ORIFICES ASSEMBLY | ASSY-024401 | A | 1 | |
| 680 | ••FP 2-4 SELF TEST ORIFICE MOUNT | MACH-026267 | A | 1 | |

| ITEM | DESCRIPTION | PART NO. | REV | QTY | INFO |
|------|--|----------------------------|-----|-----|------|
| 690 | ••Fitting, Bulkhead, #10-32, Brass, CLIPPARD 15027 | PNEX-020960 | A | 4 | |
| 700 | ••ORIFICE, FIXED, .007, #10-32, OKEEFE Q-7-BR | PNEU-035199 | A | 4 | |
| 710 | ••SCREW, SHCS, M6 X 12 LG, SS | HDWX-014082 | E | 2 | |
| 720 | •SCREW, SHCS, M6 X 14 LG, SS | HDWX-014081 | - | 1 | |
| 730 | •FP2.1 LIFT MOTOR ASSEMBLY | ASSY-038192 | A | 1 | |
| 740 | ••DC MOTOR, ETHERCAT WITH COM - NANOTECH PD4-E601L42-E-65- 1 | ELEC-038248 | B | 1 | |
| 750 | ••FP2.1 SERVO MOTOR MOUNT | MACH-038249 | A | 1 | |
| 760 | ••HUB, COUPLING, 8mm - McMASTER CARR 9845T305 | MECH-038255 | A | 1 | |
| 770 | ••SPIDER, COUPLING, 1-5/16" - McMASTER CARR 9845T190 | MECH-038236 | B | 1 | |
| 780 | ••HUB, COUPLING, 3/8" - McMASTER CARR 9845T302 | MECH-038256 | A | 1 | |
| 790 | ••SCREW, SHCS, M4 X 14 LG, SS | HDWX-014060 | C | 4 | |
| 800 | ••SCREW, SHCS, M4 X 20 LG, SS | HDWX-014062 | D | 3 | |
| 810 | ••QA0405MK0VA04000 Ethernet M12 4 Pin to RJ45 D-Coded Cable | ELEC-034021 | B | 1 | |
| 820 | ••M12-5 Pin, B-coded, PVC, 5M Cable, MEC-5FP-5M | ELEC-039244 | B | 1 | |
| 830 | ••12 Pin M12 Female Straight, Round Plug, Single Ended, Flying lead cable, 5M 7000-19041-7020500 | ELEC-039245 | A | 1 | |
| 840 | ••PROX SWITCH PNP FLUSH MOUNT | ELEC-010803 | B | 3 | |
| 850 | ••CABLE M12X6M | ELEC-010350 | B | 3 | |
| 860 | ••M8x1.0 STANDARD PROX JAM NUT | M8x1.0 PROX SWITCH JAM NUT | A | 6 | |
| 870 | ••PROX SWITCH BRACKET | MACH-041987 | A | 3 | |
| 880 | ••PROX MOUNT EXTRUSION | MACH-041988 | A | 1 | |
| 890 | ••SCREW, BHCS, M6 X 14 LG, SS | HDWX-013241 | A | 3 | |
| 900 | ••SCREW, SHCS, M6 X 35 LG, SS | HDWX-014088 | B | 2 | |
| 910 | •FP2.1 MANUAL LIFT SHAFT ASSY | ASSY-038191 | B | 1 | |
| 920 | ••RS 2-4 LIFT CRANK HANDLE SHAFT | MACH-034310 | B | 1 | |
| 930 | ••124mm hand wheel w/ folding handle mod. | MACH-034910 | B | 1 | |
| 940 | ••- | - | B | 2 | |
| 950 | ••PIN, SLOTTED SPRING, 1/8" X 1-1/4" LG, SS | MECX-017897 | B | 1 | |
| 960 | ••PIN, DOWEL, 1/8 DIA X 1/4 LG, SS | MECX-017895 | B | 2 | |
| 970 | ••PLUNGER, BALL-NOSE (NYLON), LCK ELEMENT, M5X0.8, STL | MECH-035170 | B | 1 | |
| 980 | ••FP2.1 HAND CRANK GUIDE BLOCK | MACH-038233 | B | 1 | |
| 990 | ••SCREW, SHCS, M4 X 20 LG, SS | HDWX-014062 | D | 4 | |
| 991 | | HDWX-014281-7 | | | |
| 992 | | HDWX-009484-14 | | | |