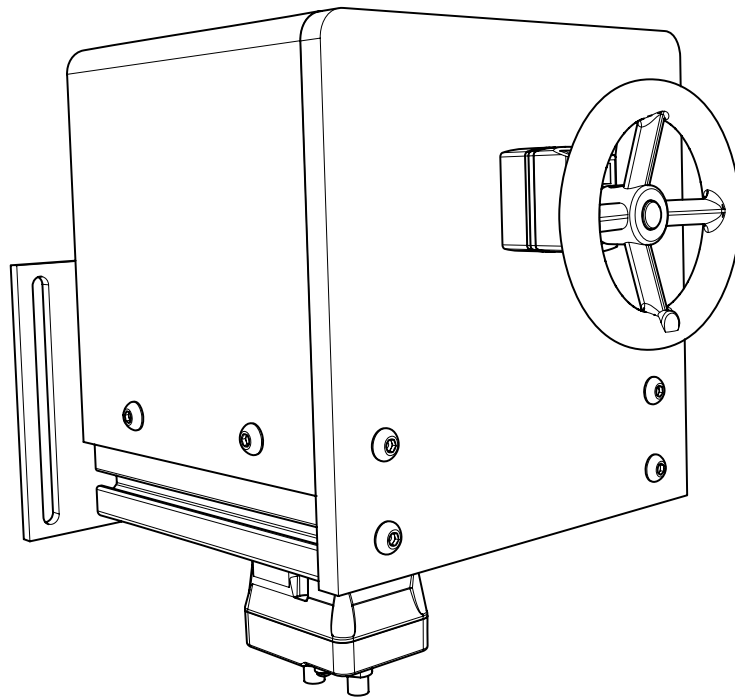
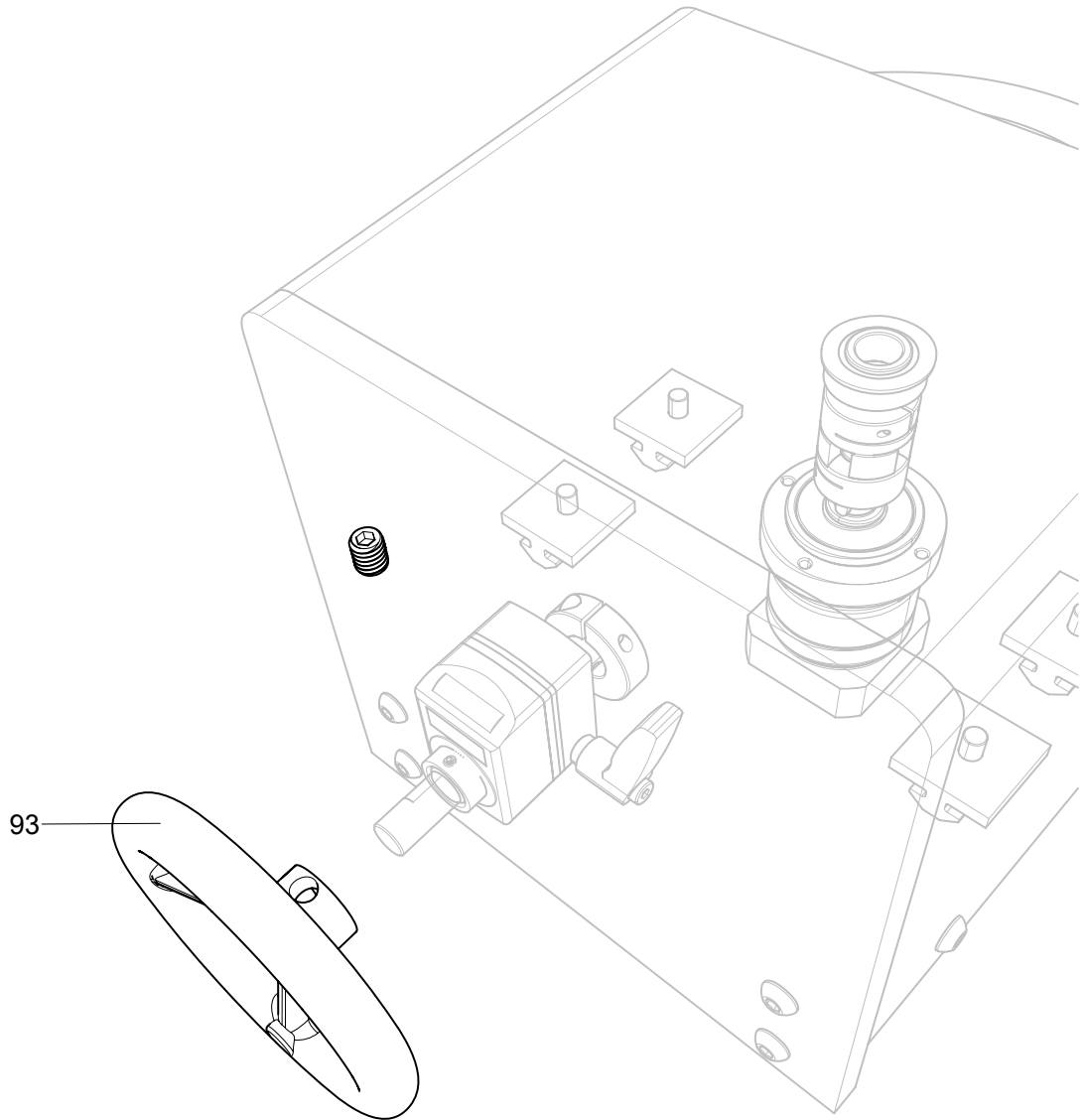


FLEX PITCH 4-HEAD 10"-PITCH LRG FR ASSY



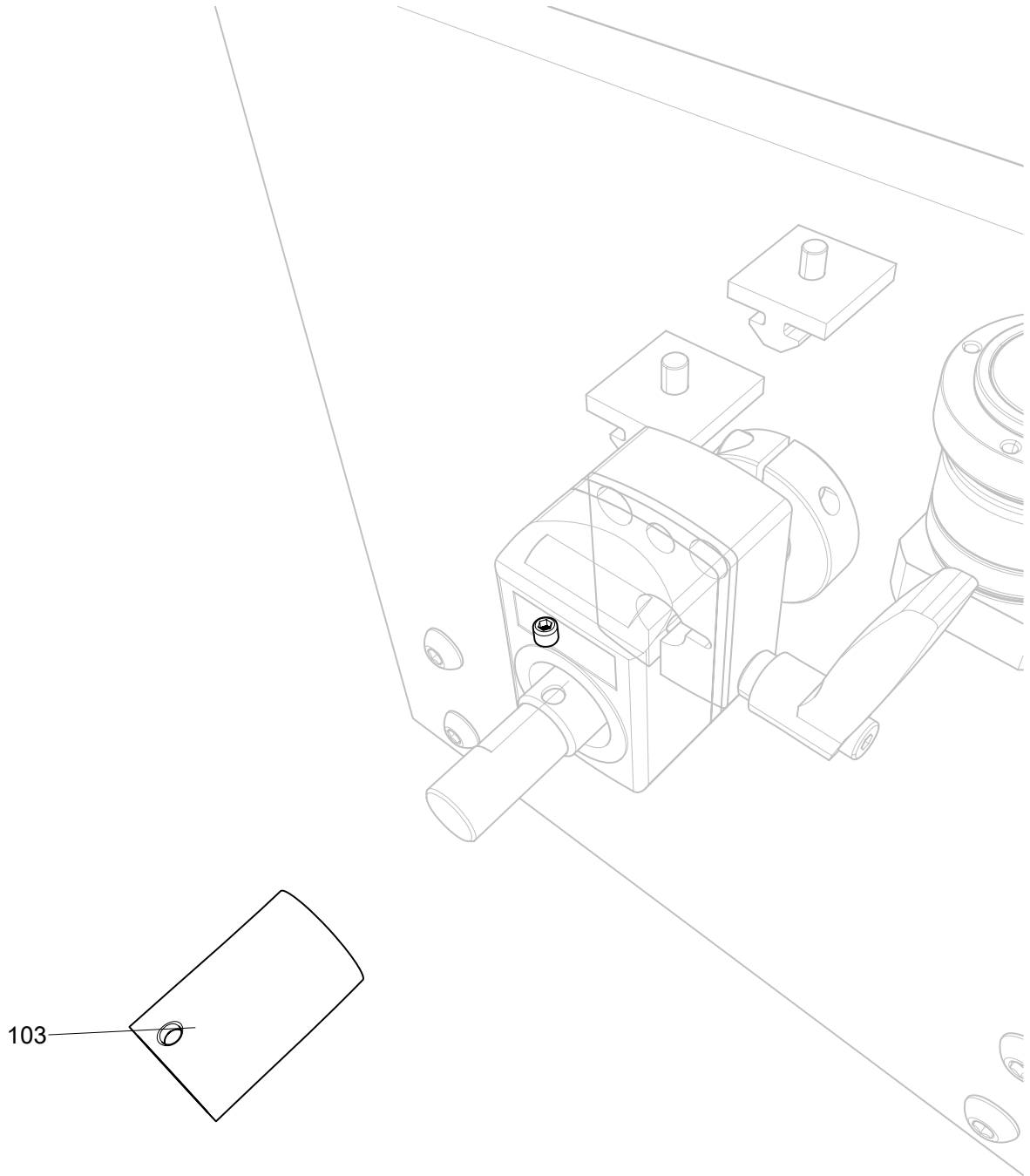
Spacing Wheel

FLEX PITCH 4-HEAD 10"-PITCH LRG FR ASSY



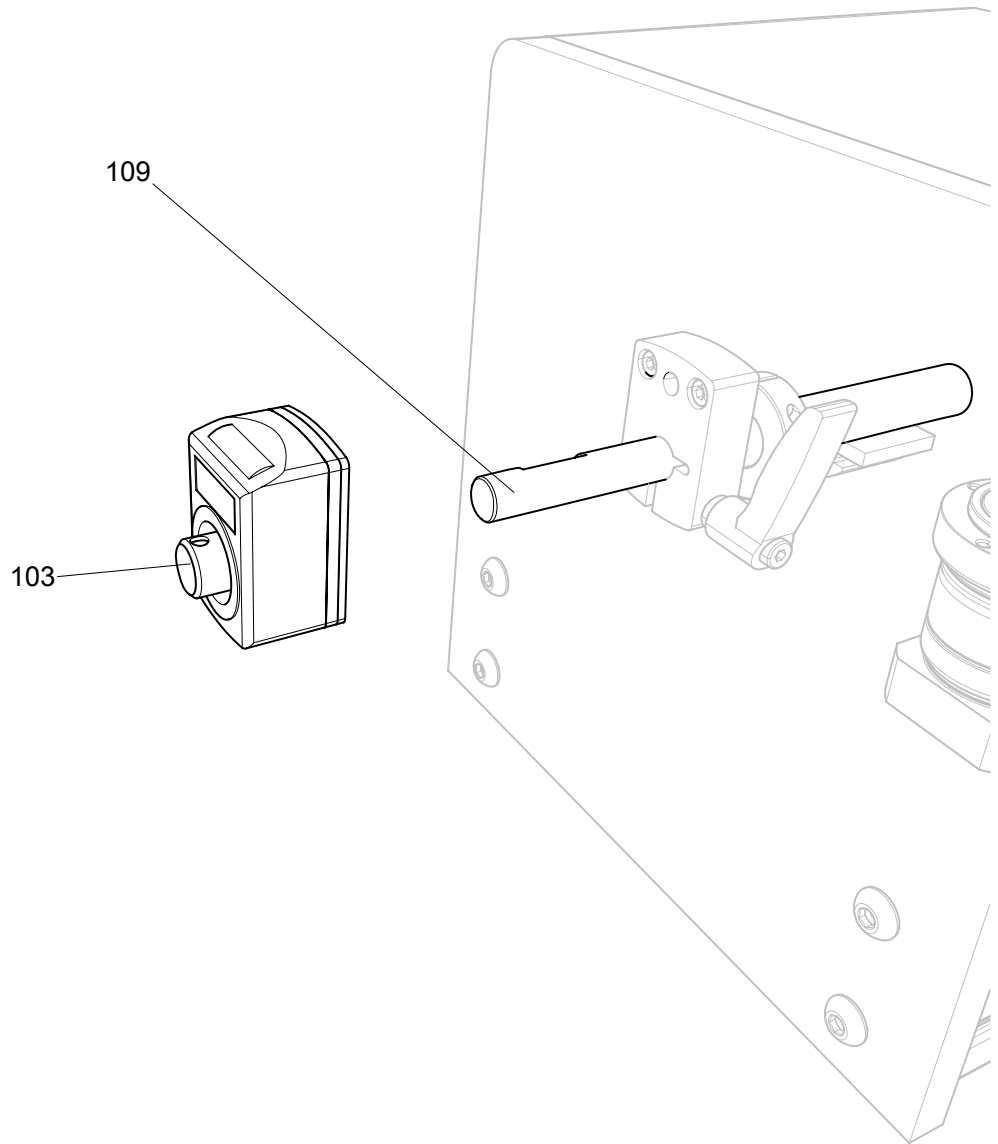
Wheel Removal

FLEX PITCH 4-HEAD 10"-PITCH LRG FR ASSY



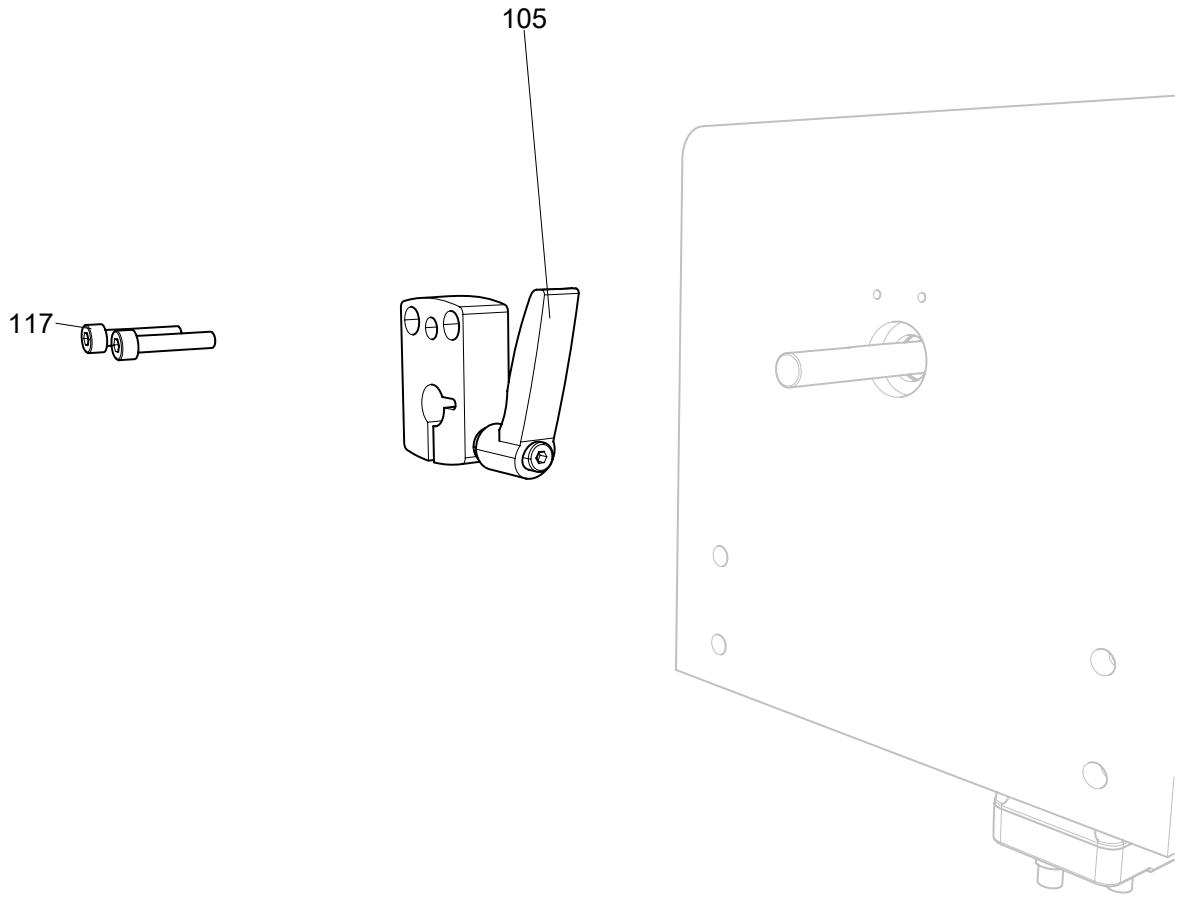
Collar Removal

FLEX PITCH 4-HEAD 10"-PITCH LRG FR ASSY



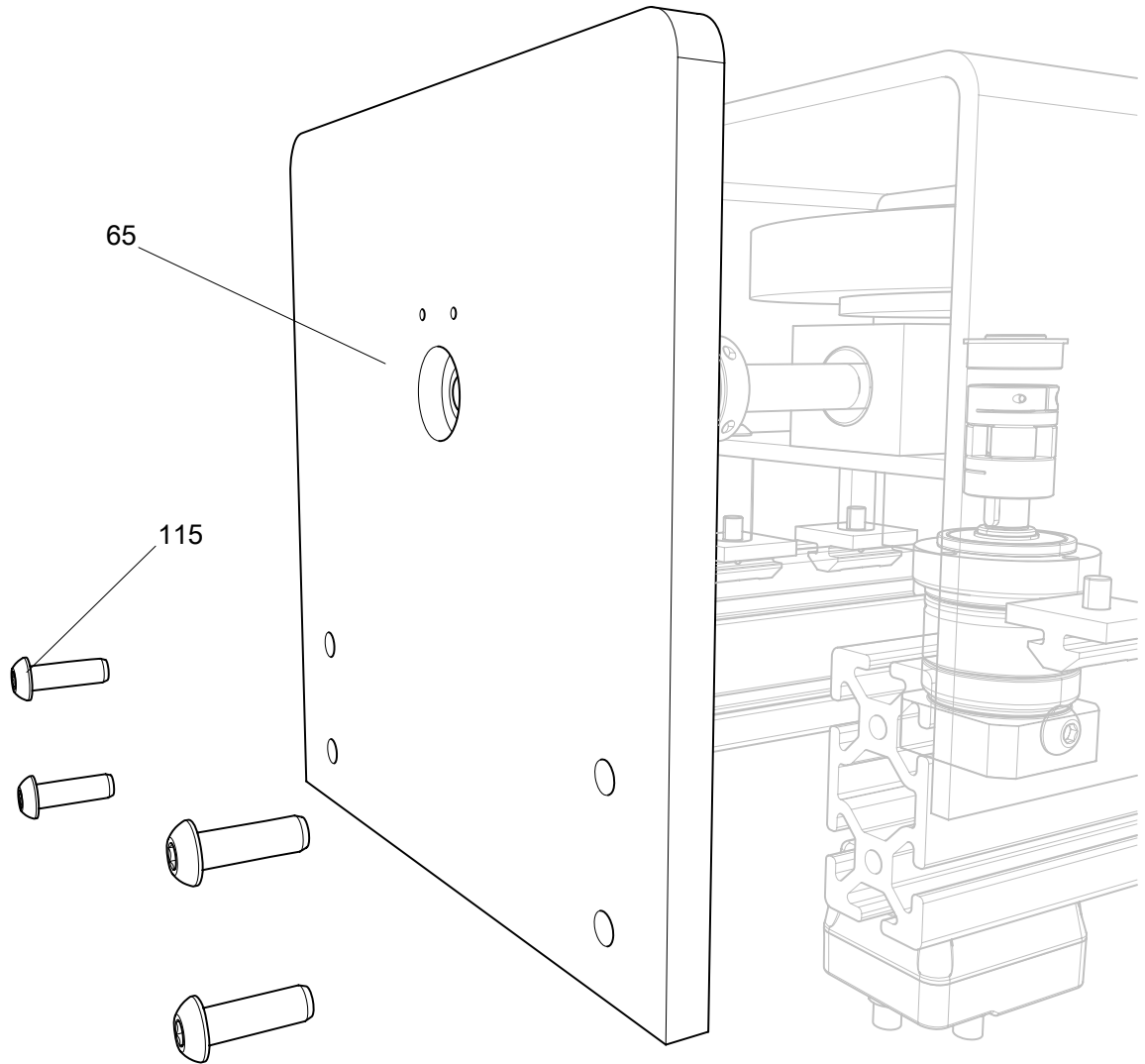
Digital Positioner

FLEX PITCH 4-HEAD 10"-PITCH LRG FR ASSY



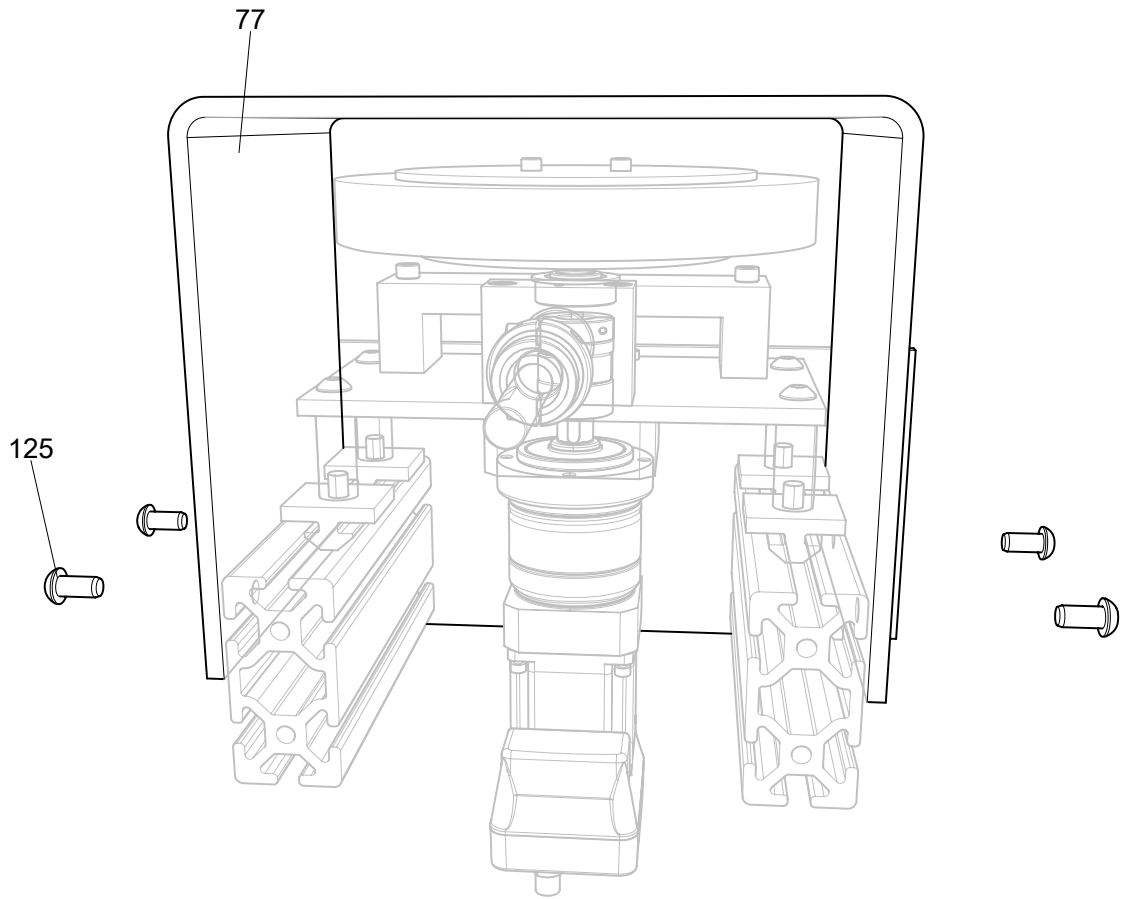
Lock

FLEX PITCH 4-HEAD 10"-PITCH LRG FR ASSY



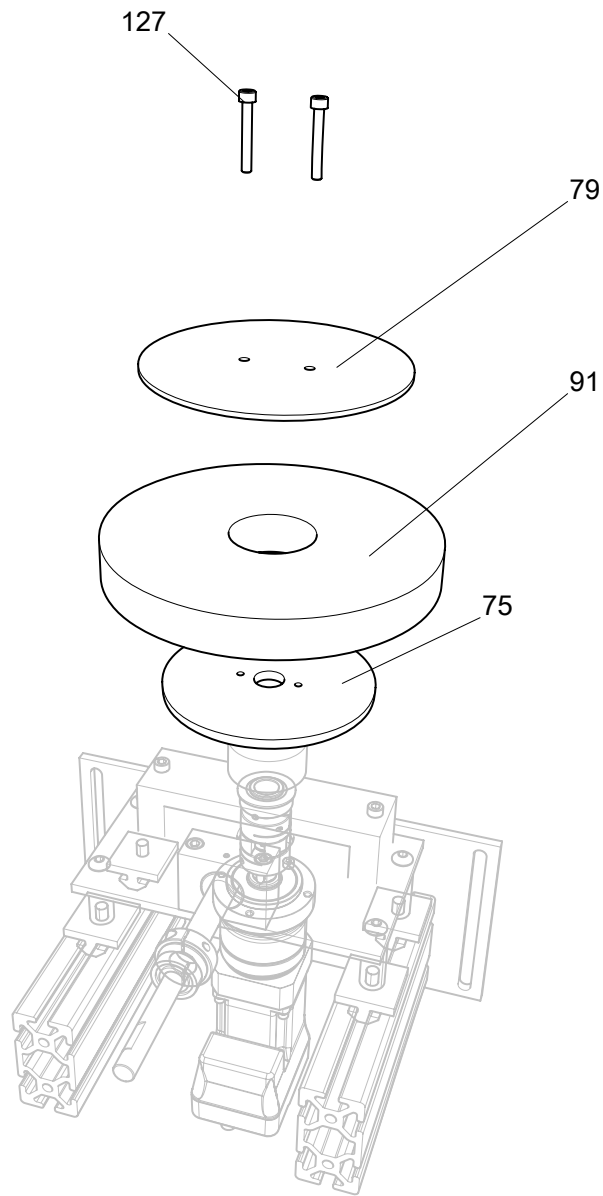
Spacing Plate

FLEX PITCH 4-HEAD 10"-PITCH LRG FR ASSY



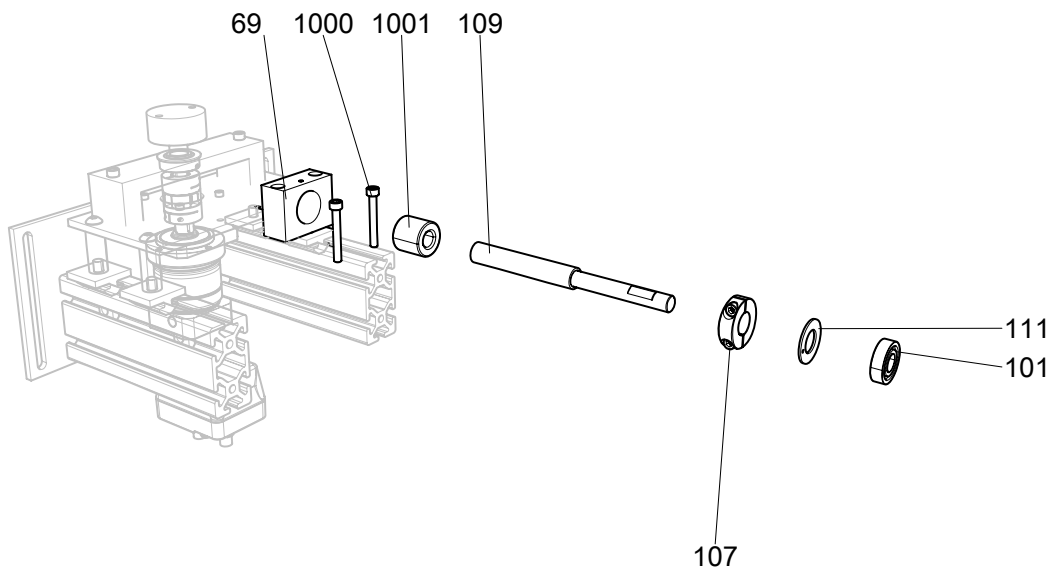
Safety Guard

FLEX PITCH 4-HEAD 10"-PITCH LRG FR ASSY



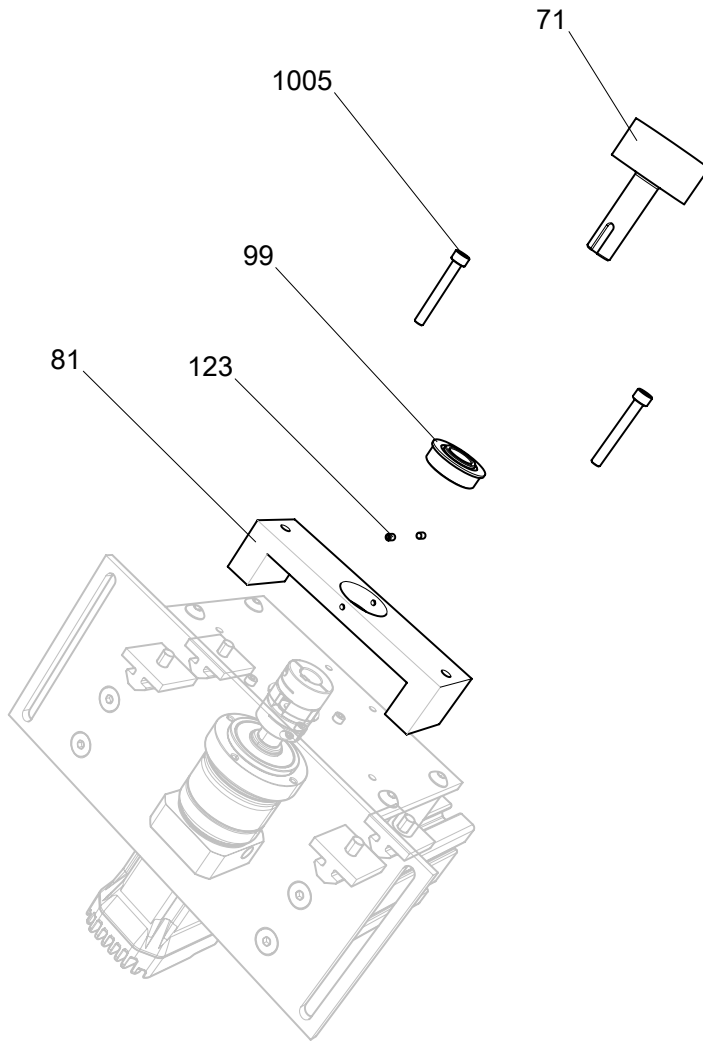
Top Disc Removal

FLEX PITCH 4-HEAD 10"-PITCH LRG FR ASSY



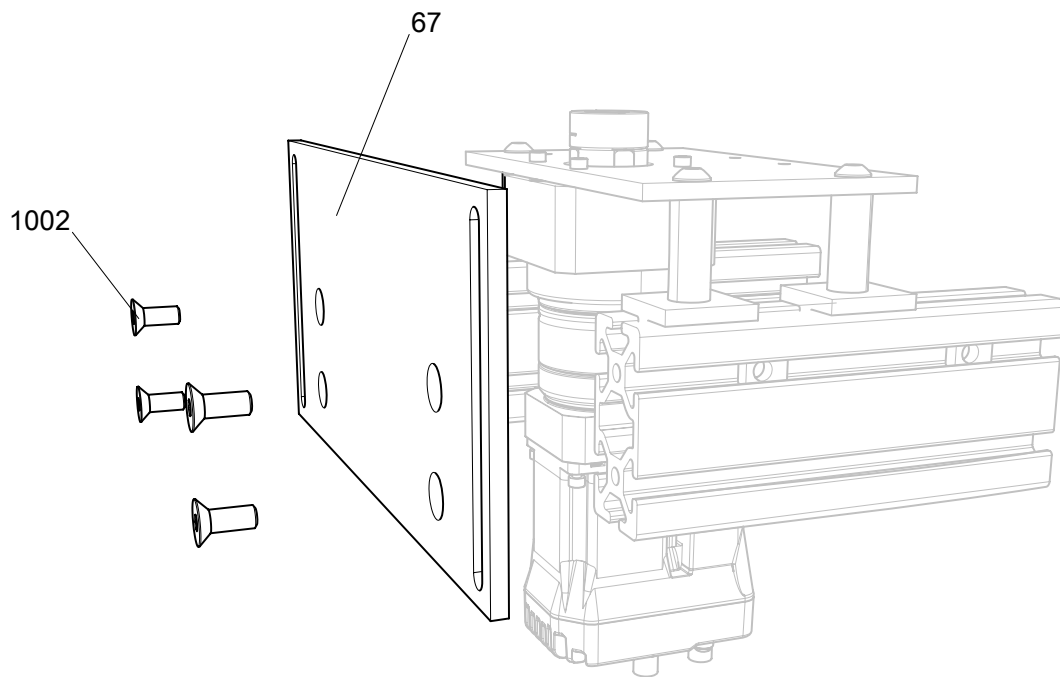
Wheel Shaft and Block Parts

FLEX PITCH 4-HEAD 10"-PITCH LRG FR ASSY



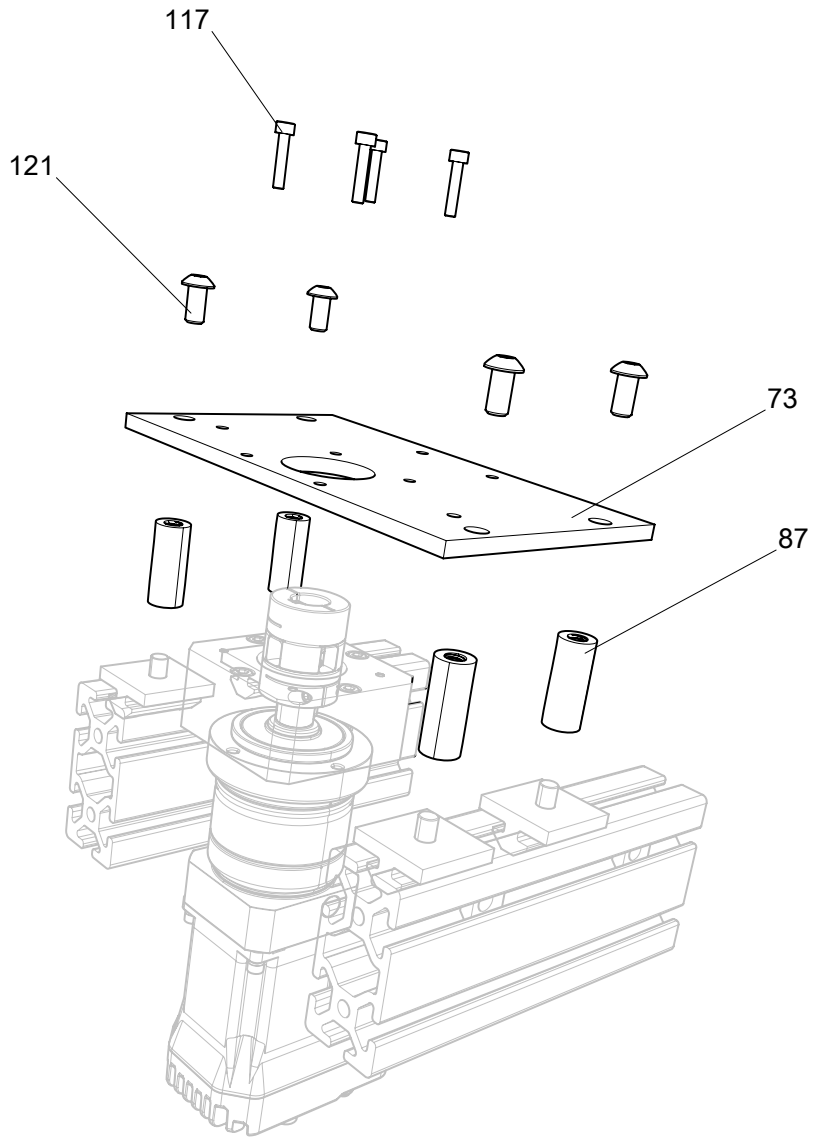
Block and 16MM Rod

FLEX PITCH 4-HEAD 10"-PITCH LRG FR ASSY



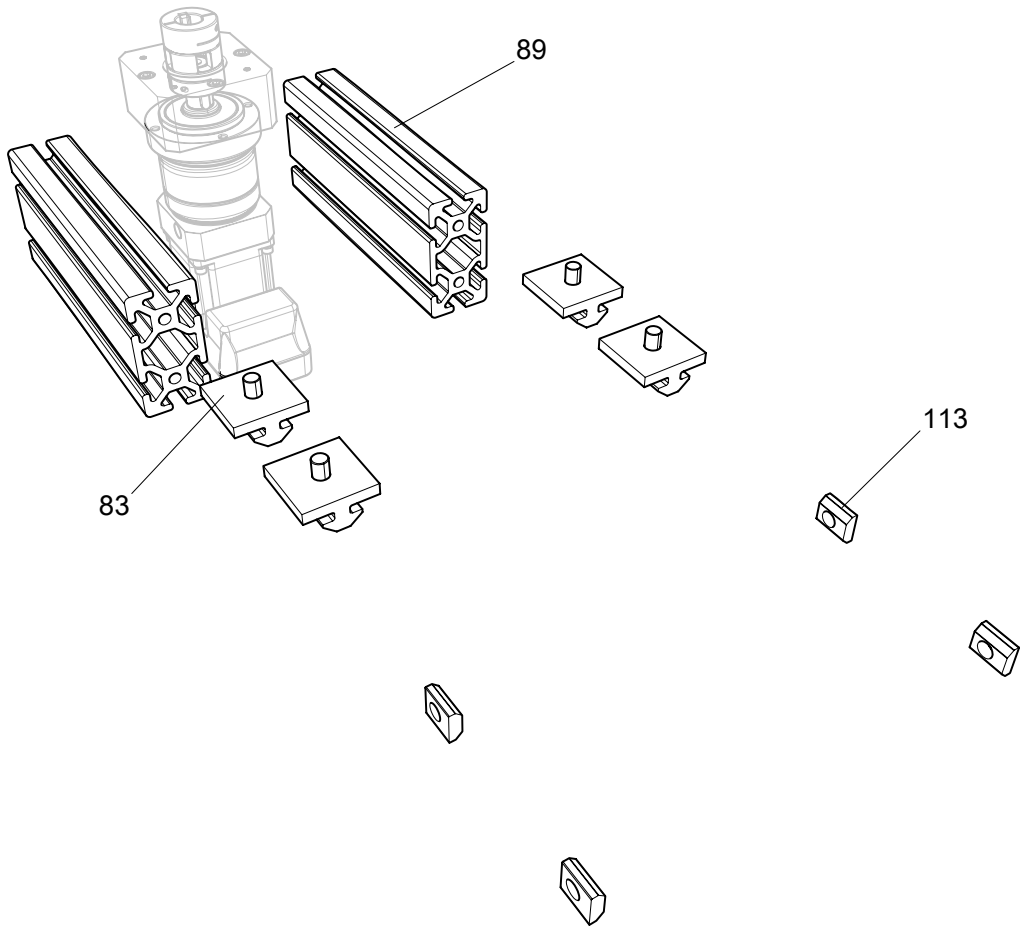
Spacing Wheel Mounting Plate

FLEX PITCH 4-HEAD 10"-PITCH LRG FR ASSY



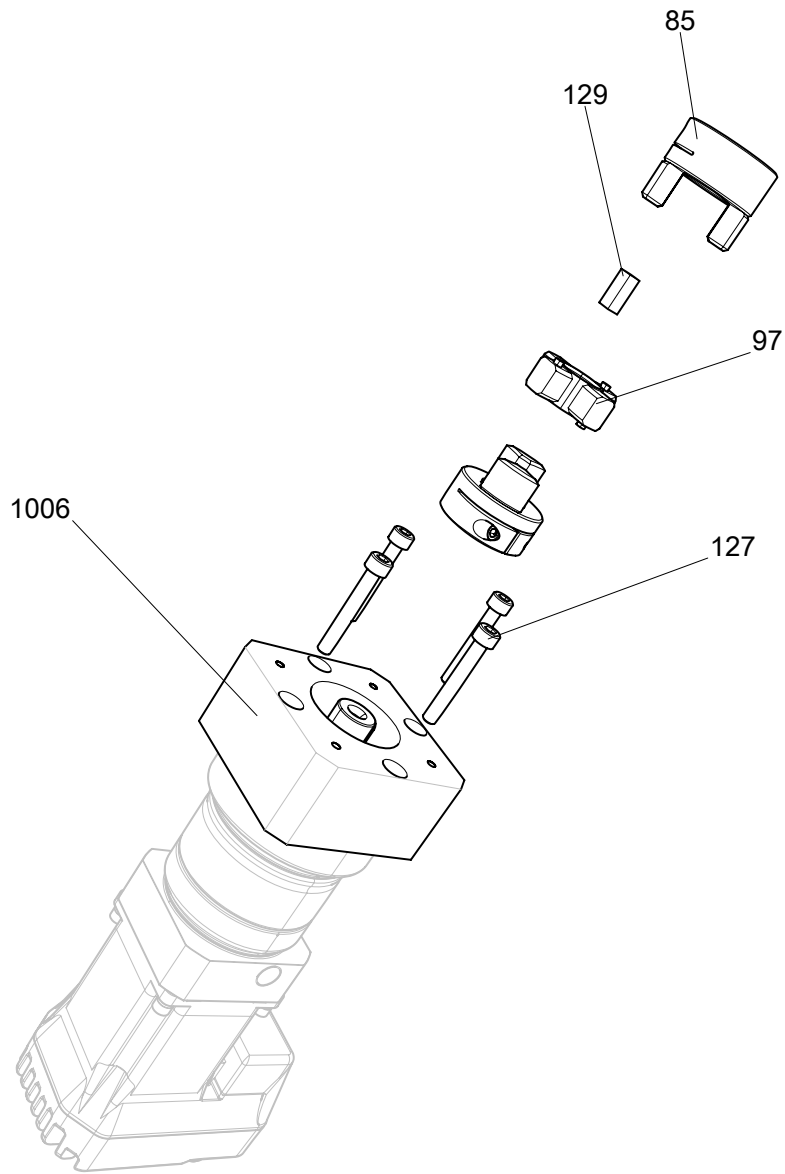
Aluminum Plate for Spacing Wheel

FLEX PITCH 4-HEAD 10"-PITCH LRG FR ASSY



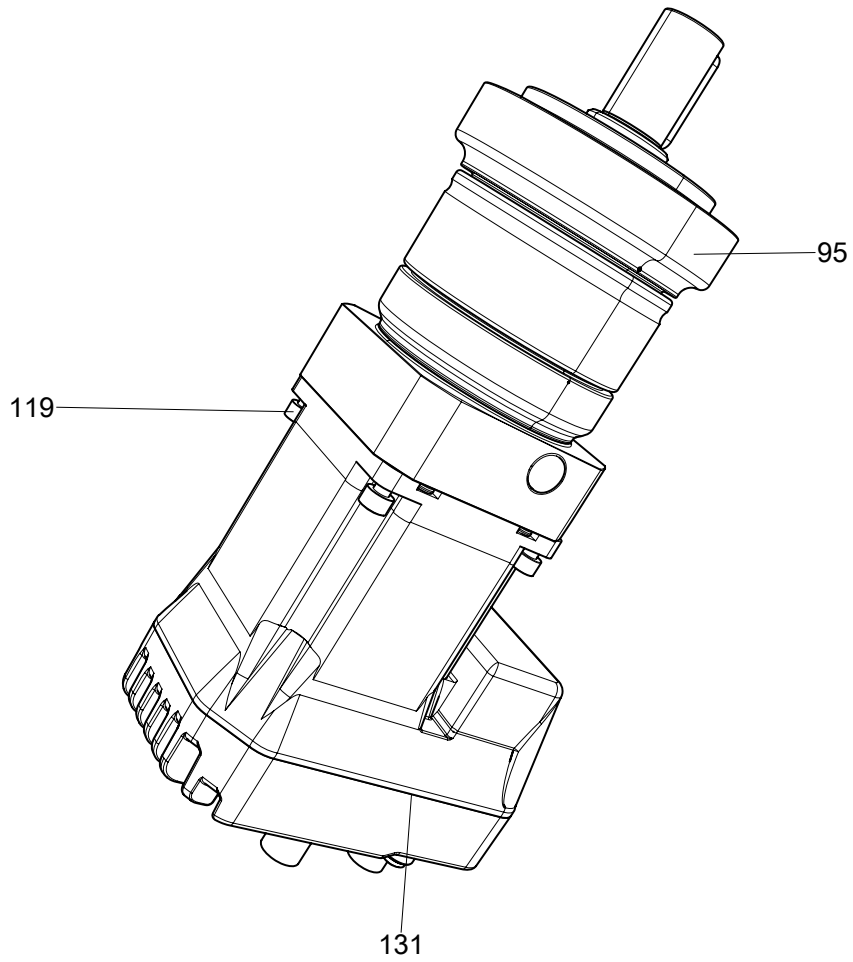
Wheel Spacer Aluminum Extrusion

FLEX PITCH 4-HEAD 10"-PITCH LRG FR ASSY



Servo Coupling

FLEX PITCH 4-HEAD 10"-PITCH LRG FR ASSY



Servo

FLEX PITCH 4-HEAD 10"-PITCH LRG FR ASSY

ITEM	DESCRIPTION	PART NO.	REV	QTY	INFO
1	FLEX PITCH 4-HEAD 10"-PITCH LRG FR ASSY	ASSY-035034-A	A	1	
3	•FP 2-4 MAIN ENCLOSURE ASSEMBLY	ASSY-023738	A	1	
5	••FP 2-4 STD MAIN ENCLOSURE (CTD244210LG)	ELEC-034276	A	1	
7	••FP 2-4 HOFF CP2442G SUB-PANEL	ELEC-036271	A	1	
9	••FAN, ALPS 27175101, HOFFMAN 5" FAN HF0524414 (24v)	ELEC-010495	A	1	
11	••TINA 8A, 8 PORT CONNECTION BLOCK	ELEC-011802	A	1	
13	••Cord grip, icotek, 54241, KEL-U-24 10, 10 insert cord grip	ELEC-036259	A	1	
15	••Socomec handle, pistol, S1 type	ELEC-012402	A	1	
17	••Cord Grip, ICOTEK 43710, KEL-DPZ 24/25	ELEC-035988	A	1	
19	••H0509, 1/2" Liquidtight 90° Connector	ELEX-008000	A	2	
21	••01051 PLUG HOLE DOME 7/8	ELEX-012568	B	1	
23	••SWITCH, E-STOP, PUSHBUTTON, TINA, JOKAB 30-054-00	ELEC-010884	A	1	
25	••SIGN, E-STOP, JSESB-YD60, JOKAB 50-001-21	LABX-035909	A	1	
27	••RJ45-Panel-Mount-W/lp67-Cap Turck	ELEC-011299	A	1	
29	••GRILL, HOFFMAN, HG0500404, 5" EXHAUST GRILL KIT	ELEC-010496	A	1	
31	•FP 2-4 570mm LED strip light and door switch assembly	ASSY-034751	A	1	
33	••FP 2-4 Light Bar Door Switch Bracket	MACH-034725	A	1	
35	••FP 2-4 Light Bar Door Switch Strikeplate	MACH-034726	A	1	
37	••LED Strip Light, Banner WLS28-2XW570XPBQ	ELEC-034746	A	1	
39	••LED strip light right angle bracket set, Banner SMBWLS28SM	ELEC-034747	A	2	
41	••CABLE, SAFETY, M12X6M 5 COND SHIELDED, JOKAB 20-056-00	ELEC-010338	A	1	
43	••SCREW, SHCS, M6 X 20 LG, SS	HDWX-013030	A	2	
45	••T-NUT, M6 FOR PROFILE 8, ITEM 0.0.480.50	HDWX-033403	A	2	
47	••SCREW, FHCS, M6 X 16 LG, SS	HDWX-013354	D	2	
49	••WASHER, STD, M4, SS	HDWX-014327	A	6	
51	•TESTER CONVEYOR	TESTER CONVEYOR	A	1	
53	•ENCODER ASSY CONVEYOR	ASSY-032504	A	2	
55	••ENCODER DYNAPAR, HS2020488144J, SEALED HOLLOW SHAFT ENCODER, 2048 RESOLUTION, 5/8"ID DIFFERENTIAL BIDIRECTIONAL 5-26V, 8 PIN M12 CONNECTOR	ELEC-040777	B	1	

FLEX PITCH 4-HEAD 10"-PITCH LRG FR ASSY

ITEM	DESCRIPTION	PART NO.	REV	QTY	INFO
57	••Cable, Turck WKC8T-10/S618, M12 quick connect, 8 pin, Female, 90 degree, 10M, Encoder-cable	ELEC-040021	A	1	
59	••SCREW, BHCS, M8 X 25 LG, SS	HDWX-013254	D	1	
61	••SPACER, UNTHREADED - 3/4" OD, 5/8" LG, FOR 5/16" SCREW, AL - MCMaster CARR 92510A801	MECH-042325	A	1	
63	•SPACING WHEEL, MANUAL	ASSY-038466	B	1	
65	••ALUMINUM PLATE FOR SPACING WHEEL ROD	MACH-038939	B	1	
67	••SPACING WHEEL MOUNTING PLATE	MACH-038940	B	1	
69	••BLOCK FOR CYLINDRICAL NUT	MACH-038942	B	1	
71	••SPACING WHEEL DISK CONNECTOR	MACH-038944	B	1	
73	••ALUMINUM PLATE FOR SPACING WHEEL MOTOR	MACH-038943	B	1	
75	••SPACING WHEEL BOTTOM DISK	MACH-038945	B	1	
77	••SAFTEY GUARD, SPACING WHEEL	MACH-038948	B	1	
79	••SPACING WHEEL TOP DISK	MACH-038953	B	1	
81	••BLOCK TO SUPPORT 16MM ROD	MACH-038963	B	1	
83	••40 SERIES SLIDING DOOR GUIDE, 80/20, 40-2051 MACHINED	MACH-038954	B	4	
85	••CLAMPING HUB FOR 16MM SHAFT, 9845T3	MECH-038946	B	2	
87	••1-1/2" AL ROUND STANDOFF, 5/8" OD, 5/16-18 TAP	MECH-038947	B	4	
89	••EXTRUSION 40-4080 LITE x 190.5mm #40-7048 BOTH ENDS	MECH-038949	B	2	
91	••SPACING WHEEL RUBBER DISK	MECH-038952	B	1	
93	••SPOKED DIE CAST ZINC HAND WHEEL, MCMaster 6033K81	MECH-038955	A	1	
95	••APEX Dynamics part # PEII-070-007 / Nanotec PD4-E601L42-E-65-1 Planetary In-Line Gearhead, PEII-070 Series, 7:1	MECH-039227	B	1	
97	••SPIDER, COUPLING, 1-5/16" - McMASTER CARR 9845T190	MECH-038236	B	1	
99	••Flanged Ball Bearing .625 ID	MECH-039650	A	1	
101	••BALL BEARING - 12mm, MISUMI, B6001	MECH-040299	A	1	
103	••DIGITAL POSITIONING INDICATOR-w/12mm SLEEVE, MISUMI, DPNFR3-CSE12	MECH-040301	A	1	
105	••CLAMP PLATE 12mm DIA, MISUMI, DPNK12	MECH-040300	A	1	
107	••SHAFT COLLAR-SPLIT 16mm DIA, MISUMI, PSCSP16-10	MECH-040297	A	1	
109	••LEAD SCREW RH 16mm-12mm STEPPED END, MISUMI, MTSTRA16-170-S80-Q12-FC12-FW 20-FY1	MECH-040296	A	1	

FLEX PITCH 4-HEAD 10"-PITCH LRG FR ASSY

ITEM	DESCRIPTION	PART NO.	REV	QTY	INFO
111	••THRUST WASHER 16mm ID, MISUMI, MDZW14	MECH-040298	A	1	
113	••NUT T-NUT SLIDE IN 40 SERIES METRIC M8	MECH-015583	A	4	
115	••SCREW, BHCS, M8 X 25 LG, SS	HDWX-013254	D	4	
117	••SCREW, SHCS, M4 X 20 LG, SS	HDWX-014062	D	6	
119	••SCREW, SHCS, M4 X 14 LG, SS	HDWX-014060	C	4	
121	••SCREW BHCS, 5/16-18 X 0.63 BO	HDWX-013217	J	4	
123	••SCREW SET SOC BO M4 X 6 68063643	HDWX-013778	B	3	
125	••SCREW, BHCS, M8 X 16 LG, SS	HDWX-013251	J	4	
127	••SCREW, SHCS, M5 X 35 LG, SS	HDWX-014079	D	6	
129	••KEY- 5mm SQUARE x .50 INCH LONG	KEY-5mm Square x .50 inch		1	
131	••SERVO, Schneider, LMHAE572C, NEMA23, Ethernet IP	ELEC-043342	A	1	
133	•WIDE REJECT CHUTE ASSY FP	ASSY-035127	-	1	
135	••WIDE CHUTE FRONT BOTTOM FP	MECH-035128	-	1	
137	••WIDE CHUTE TOP FP	MECH-035129	-	1	
139	••WIDE CHUTE BACK PANEL FP	MECH-035130	B	1	
141	••FP 2-4 CHUTE SIDE FP	MECH-034300	C	2	
143	••WIDE CHUTE BACK ANGLE W/SLIT FP	MECH-035131	-	1	
145	••FP 2-4 REJECT CHUTE LASER BACK PANEL	MACH-034921	B	1	
147	••SCREW, SELF TAPPING, FLAT, #10 X 1 LG	HDWX-013407	C	23	
149	••SCREW, FHCS, M8 X 25 LG, SS	HDWX-013367	B	4	
151	••SCREW, FHCS, M6 X 30 LG, SS	HDWX-013357	D	2	
153	••NUT, HEX, M6, SS	HDWX-013099	D	2	
155	•MANUAL VALVE ASSY	ASSY-038934	B	1	
157	••MANUAL VALVE MOUNTING PLATE	MACH-038935	A	1	
159	••REGULATOR, AIR, 2-100 PSI, .250 NPT, FAIRCHILD 30252	PNEU-001180	B	1	
161	••REGULATOR, AIR, 1/2-30 PSI, .250 NPT, FAIRCHILD 30232	PNEU-010981	-	1	
163	••SCREW, SHCS, M8 X 16 LG, SS	HDWX-014096	C	2	
165	••SCREW, BHCS, 10-32 X 0.50 LG, SS	HDWX-013207	A	4	
167	••FITTING, ELBOW, STREET - 90 DEGREE, 1/4F X 1/8M, BRASS, PARKER 2202P-4-2	PNEX-021225	A	2	
169	••TRANSDUCER, PRESSURE, 0-50PSI, 4-20MA, 1/4NPT	ELEC-010902	A	1	
171	••TRANSDUCER, PRESSURE, 0-100 PSI, 4-20MA, 1/4NPT	ELEC-010901	A	1	
173	••100 psi LABEL	100 psi LABEL	-	1	
175	••30 psi LABEL	30 psi LABEL	-	1	
177	•FP STANDARD OMRON HMI ENCLOSURE ASSY	ASSY-039275	A	1	
179	••FP 2-4 HMI SWING ARM ASSEMBLY	ASSY-034319	B	1	

FLEX PITCH 4-HEAD 10"-PITCH LRG FR ASSY

ITEM	DESCRIPTION	PART NO.	REV	QTY	INFO
181	•••FP 2-4 HMI MOUNTING PLATE	MACH-034574	B	2	
183	•••ITEM SWING ARM ASSEMBLY	MACH-026146	A	1	
185	•••40X40 3N Light EXTRUSION X 13.39 (340mm) LG	MECH-035508	A	1	
187	•••SCREW, SHCS, M8 X 20 LG, SS	HDWX-014097	H	4	
189	•••NUT, HEX, JAM, M8, PL	HDWX-006914	B	4	
191	••HMI ENCLOSURE FOR FLEX PITCH TESTERS	ASSY-023740	A	1	
193	•••FLEX PITCH 2-4 HMI ENCLOSURE (LHC302515)	ELEC-034670	-	1	
195	•••HMI CONTROL INTERFACE, 5" COLOR, ETHERNET - NS5-SQ11B-V2	ELEC-038066	A	1	
197	•••PUSHBUTTON, START/STOP, AB 800FPU2EFFEPX11	ELEC-010704	A	1	
199	••••ABPFA301	-	A	4	
201	•••SWITCH, E-STOP, PUSHBUTTON, TINA, JOKAB 30-054-00	ELEC-010884	A	1	
203	•••SIGN, E-STOP, JSESB-YD60, JOKAB 50-001-21	LABX-035909	A	1	
205	•FP2.1 TRANSFORMER ASSY	ASSY-038193	A	1	
207	••FP2.1 TRANSFORM MOUNTING PLATE	MACH-038235	A	1	
209	••SCREW, SHCS, M8 X 16 LG, SS	HDWX-014096	C	10	
211	••TRANSFORMER ACME 3KVA 480-240/120	ELEC-012490	A	1	
213	•FP 2-4 STACK LIGHT ASSEMBLY	ASSY-032341	A	1	
215	••Extension, 12" Stacklight, Blk Anod Alum, BANNER SOP-E12-300A	ELEC-033364	A	1	
217	••Adapter, 30mm Stacklight Ext Base Cover, BANNER SA-E12M30	ELEC-033318	A	1	
219	••Bracket, Right angle, Light, BANNER SMB30A	MECH-032681	C	1	
221	••CABLE, SAFETY, M12X6M 5 COND SHIELDED, JOKAB 20-056-00	ELEC-010338	A	1	
223	••Light, EZ, Audible, Steady tone, 95dB, BANNER K50LGRAL1YPQ	ELEC-010598	C	1	
225	••Adapter, 30mm stacklight cover, BANNER SA-M30E12	ELEC-033810	A	1	
227	••SCREW, SHCS, M6 X 12 LG, SS	HDWX-014082	E	2	
229	••T-NUT, M6, PROFILE 8, ITEM 0.0.026.23	HDWX-013136	-	2	
231	•SECONDARY REJECT ASSY MHL	ASSY-025498	C	1	
233	••30440 CLAMP CROSS 1/2 X 1/2	MECH-010374	A	1	
235	••ROD SECONDARY REJECT	MACH-029988	A	1	
237	••SCREW, FHCS, M6 X 12 LG, SS	HDWX-013353	A	1	
239	••01139 FITTING BRASS BULKHEAD BARBED	PNEX-021233	A	1	
241	••32186 ROD ADJ SS 1/2DIA X 10	MECH-010733	C	1	
243	••SCREW, BHCS, 5/16-18 X 0.75 LG, SS	HDWX-013219		1	

FLEX PITCH 4-HEAD 10"-PITCH LRG FR ASSY

ITEM	DESCRIPTION	PART NO.	REV	QTY	INFO
245	•FP2.1 PRIMARY REJECT ASSEMBLY	ASSY-038188	A	1	
247	••FP2.1 REJECT CYLINDER MOUNT	MACH-038231	A	1	
249	••FP2.1 REJECT CYLINDER NUT PLATE	MACH-038232	A	1	
251	••FP 2-4 REJECT CYLINDER MOUNTING	MACH-027249	A	1	
253	••METRIC SCALE LABEL 30-100mm	LABX-014452	A	1	
255	••REJECT CYLINDER BRACKET	MACH-026263	A	1	
257	••FP 2-4 ALTERED CLAMP HANDLE - YELLOW	MACH-026776	A	2	
259	•••Clamp, Handle, M6 X 30 LG, Yellow, MCMaster 5101K653	MECH-033349	A	1	
261	•••ABPFA301	-	A	1	
263	••CLAMP, COLLAR, 1/4 ID, ZINC PLATED, MCMaster 9961K13	MECH-015218	A	1	
265	••FITTING FLOW CONTROL 1/4T X 1/8NPT	PNEX-021112	A	1	
267	••CYLINDER, SINGLE ACTING, 3/4 BORE, W/BUMPER, AMER 750SNS-2.00-32-9	PNEU-018114	-	1	
269	••NUT, HEX, JAM, 1/2-20, SS	HDWX-013042		1	
271	••SCREW, SHCS, M8 X 20 LG, SS	HDWX-014097	H	2	
273	••WASHER, FENDER, M8, SS	HDWX-014248	B	2	
275	•FP 2-4 AIR PREP FILTER ASSEMBLY	ASSY-023785	A	1	
277	••FILTER/REG ASSY COMPLETE (LEFT TO RIGHT)	PNEU-010500	A	1	
279		HDWX-006954		4	
281	••SCREW, BHCS, M8 X 12 LG, BO	HDWX-013248	A	2	
283	•FLEX PITCH 2-4.10 FRAME ASSEMBLY	ASSY-023867	A	1	
285	••SCREW, SHCS, M12 X 25 LG, SS	HDWX-014043	A	8	
287	••SCREW, SHCS, M6 X 20 LG, SS	HDWX-013030	A	56	
289	••SCREW, BHCS, M8 X 12 LG, SS	HDWX-013249	G	32	
291	••SCREW, BHCS, M8 X 20 LG, SS	HDWX-013252	C	8	
293	••SCREW, SHCS, M8 X 20 LG, SS	HDWX-014097	H	8	
295	••SCREW, SHCS, M5 X 14 LG, SS	HDWX-014073	D	22	
297	••SCREW, MCMaster CARR, 91292A816, M6 x 75mm lg. SHCS - SOLD IN PACKETS OF (10)	MECX-038200	A	24	
299	••8mm x 20mm Dowel	8mm x 20mm Dowel		2	
301	••FP2.1 FLEX PITCH TESTER LARGE FRAME	MACH-040047	A	1	
303	•••2 x 2 x 1/4w x 103.00	TUBE L-A1	A	1	
305	•••2 x 2 x 1/4w x 103.00	TUBE L-A2	A	1	
307	•••2 x 2 x 1/4w x 103.00	TUBE L-A3	A	1	
309	•••2 x 2 x 1/4w x 103.00	TUBE L-A4	A	1	
311	•••2 x 2 x 1/4w x 31.50	TUBE L-B2	A	6	
313	•••2 x 2 x 1/4w x 60.00	TUBE L-C1	A	2	
315	•••2 x 2 x 1/4w x 107.00	TUBE L- D	A	1	
317	•••2 x 2 x 1/4w x 107.00	TUBE L-D2	A	1	
319	•••2 x 2 x 1/4w x 44.00	TUBE L-E1	A	2	

FLEX PITCH 4-HEAD 10"-PITCH LRG FR ASSY

ITEM	DESCRIPTION	PART NO.	REV	QTY	INFO
321	••2 x 2 x 1/4w x 12.00	TUBE L-F	A	2	
323	••2 x 2 x 1/4w x 12.00	TUBE L-F2	A	2	
325	••2 x 2 x 1/4w x 31.50	TUBE L-G1	A	2	
327	••2 x 2 x 1/4w x 10.00	TUBE L-H	A	2	
329	••2 x 2 x 1/4w x 22.50	TUBE L-J	A	1	
331	••2 x 2 x 1/4w x 23.50	TUBE L-K	A	1	
333	••.50 x 2.50 x 2.50	PLATE L-I	A	1	
335	••.12 x 1.50 x 1.50	PLATE L-N	A	8	
337	••.50 x 2.50 x 6.50	PLATE L-P	A	4	
339	••.12 x 2.00 x 9.12	BRKT L-Q	A	4	
341	••2 x 2 x 1/4w x 29.50	TUBE L-R	A	2	
343	••2 x 2 x 1/4w x 6.00	TUBE L-Z	A	2	
345	••RAIL, THK, SHS20-640L(GK), SIZE 20 RAIL X 640mm LG	MECH-038197	A	2	
347	••BEARING, THK, SHS20LC1SS(GK), L M GUIDE BLOCK SIZE 20 (LONG)	MECH-038198	A	4	
349	••CLAMP, ZIMMER, MKS2001A, SIZE 20 THK RAIL CLAMP (PNEU)	MECH-038199	A	2	
351	••FP2.1 SLIDE LOWER SUPPORT ARM	MACH-038173	A	2	
353	••SCREW JACK, DAYTON-JOYCE, WJ50 0I2S-12-STDH-H2, 500 lbs. INVERTED SCREW JACK	MECH-038202	A	1	
355	••INVERTED JACK	JOYCE JACK BODY	A	1	
357	••INVERTED JACK	JOYCE JACK STEM	A	1	
359	••FP2.1 SLIDE SUPPORT RIB	MACH-038175	A	2	
361	••FP2.1 INVERTED JACK MOUNT PLATE	MACH-038176	A	1	
363	••FP2.1 INVERTED JACK SCREW RISER	MACH-038177	A	1	
365	••FP2.1 SCALE INDICATOR	MACH-039046	A	1	
367	••FP2.1 SLIDE UPPER SUPPORT ARM	MACH-038178	A	2	
369	••FP 10-PITCH SIDE TOP PANEL	MACH-040211	A	2	
371	••FP 10-PITCH TOP MID PANEL	MACH-040212	A	1	
373	••BRACKET, GUARD MOUNT - FRONT	MACH-038872	A	4	
375	••FP2.1 WINDOW OPP SIDE	MACH-039387	A	1	
377	••FP2.1 SIDE WINDOW	MACH-038179	A	2	
379	••FP2.1 WINDOW SIDE REAR	MACH-038180	A	2	
381	••FP 2-4 SELF TEST ORIFICES ASSEMBLY	ASSY-024401	A	1	
383	••FP 2-4 SELF TEST ORIFICE MOUNT	MACH-026267	A	1	
385	••Fitting, Bulkhead, #10-32, Brass, CLIPPARD 15027	PNEX-020960	A	4	
387	••ORIFICE, FIXED, .007, #10-32, OKEEFE Q-7-BR	PNEU-035199	A	4	
389	••SCREW, SHCS, M6 X 12 LG, SS	HDWX-014082	E	2	
391	••SCREW, SHCS, M6 X 14 LG, SS	HDWX-014081	-	1	
393	••FP2.1 LIFT MOTOR ASSEMBLY	ASSY-038192	A	1	

FLEX PITCH 4-HEAD 10"-PITCH LRG FR ASSY

ITEM	DESCRIPTION	PART NO.	REV	QTY	INFO
395	•••DC MOTOR, ETHERCAT WITH COM - NANOTECH PD4-E601L42-E-65 -1	ELEC-038248	B	1	
397	•••HUB, COUPLING, 8mm - McMASTER CARR 9845T305	MECH-038255	A	1	
399	•••SPIDER, COUPLING, 1-5/16" - McMASTER CARR 9845T190	MECH-038236	B	1	
401	•••HUB, COUPLING, 3/8" - McMASTER CARR 9845T302	MECH-038256	A	1	
403	•••SCREW, SHCS, M4 X 14 LG, SS	HDWX-014060	C	4	
405	•••SCREW, SHCS, M4 X 20 LG, SS	HDWX-014062	D	3	
407	•••PROX SWITCH PNP FLUSH MOUNT	ELEC-010803	B	3	
409	•••M8x1.0 STANDARD PROX JAM NUT	M8x1.0 PROX SWITCH JAM NUT	A	6	
411	•••PROX SWITCH BRACKET	MACH-041987	A	3	
413	•••PROX MOUNT EXTRUSION	MACH-041988	A	1	
415	•••SCREW, SHCS, M6 X 35 LG, SS	HDWX-014088	B	2	
417	••FP2.1 MANUAL LIFT SHAFT ASSY	ASSY-038191	B	1	
419	•••RS 2-4 LIFT CRANK HANDLE SHAFT	MACH-034310	B	1	
421	•••124mm hand wheel w/ folding handle mod.	MACH-034910	B	1	
423	••••ABPFA301	-	A	2	
425	•••PIN, SLOTTED SPRING, 1/8" X 1-1/4" LG, SS	MECX-017897	B	1	
427	•••PIN, DOWEL, 1/8 DIA X 1/4 LG, SS	MECX-017895	B	2	
429	•••PLUNGER, BALL-NOSE (NYLON), LCK ELEMENT, M5X0.8, STL	MECH-035170	B	1	
431	•••FP2.1 HAND CRANK GUIDE BLOCK	MACH-038233	B	1	
433	•••SCREW, SHCS, M4 X 20 LG, SS	HDWX-014062	D	4	
435	••FP 2-4 ACCESS DOOR SWITCH ASSY	ASSY-023544	A	2	
437	••Female Switch, Non-Retrofit, JOKAB,20-046-00	ELEC-010882	B	1	
439	••T-NUT, M6, PROFILE 8, ITEM 0.0.026.23	HDWX-013136	-	4	
441	••SCREW, SHCS, M6 X 12 LG, SS	HDWX-014082	E	2	
443	••SCREW, SHCS, M6 X 55 LG, SS	HDWX-014092	A	2	
445	••WASHER, STD, M6, SS	HDWX-014329	F	2	
447		HDWX-006723	A	4	
449	•FLEX PITCH 2-4.10 TOOLING SLIDE ASSEMBLY	ASSY-025689	-	1	
451	••FP 2-4 10-PITCH SLIDE BOTTOM TOOLING PLATE	MACH-027372	A	1	
453	••SLIDE HOME STOP BLOCK	MACH-038206	A	8	
455	••SHS LM GUIDE RAIL SIZE 15 x 1900mm LG, THK SHS15-1900L	MECH-017194	-	2	
457	••PIN, DOWEL, M6 X 12 LG, STL	MECX-017896	-	4	
459		HDWX-006723	A	2	
461		HDWX-006727	-	8	

FLEX PITCH 4-HEAD 10"-PITCH LRG FR ASSY

ITEM	DESCRIPTION	PART NO.	REV	QTY	INFO
463	••FP2.1 LOWER FRONT COVER (LG FRAME)	MACH-034956	A	1	
465	••FP2.1 PROBE TOOLING - 2" STROKE	ASSY-038211	A	4	
467	•••FP2.1 PROBE MOUNT	MACH-038222	C	1	
469	•••FP 2-4 PROBE ARM STOP	MACH-026197	A	1	
471	•••FLEX PITCH 2-4 PROBE SLIDE BLOCK	MACH-026198	A	1	
473	•••LM LINEAR GUIDE BLOCK C1 LIGHT PRELOAD, THK SHS15C1SSC1	MECH-033323	A	2	
475	•••TIMING BELT CLAMP (ALTER)	MECH-010107	A	1	
477	•••SCREW, FHCS, M5 X 16 LG, SS	HDWX-013351	A	4	
479	•••SCREW, SHCS, M6 X 16 LG, SS	HDWX-006953	A	2	
481		HDWX-006727	-	1	
483	•••FP 2-4 PROBE SIDE STOP, 2.00 INCH LONG	MACH-035039	A	1	
485	••••SCREW, SET, SOC, M6 X 25 LG, BO	HDWX-013780	-	1	
487	•••FP CYL ASSY, 1-1/16 X 1, W/ TRANSDUCER	ASSY-023451	A	1	
489	••••CYLINDER, SINGLE ACTING, BUMPER, MAGNETIC, 1.06 BORE X 1 STROKE, AMER 1062SNS-1.00-4-32	PNEU-010421	E	1	
491	••••NUT, HEX, JAM, 5/8-18, PL	HDWX-013080	C	1	
493	••••NUT, HEX, JAM, 5/16-24, PL	HDWX-013078	C	1	
495	••••FITTING, UNION, 1/4 TUBE, LEGRIS 3106-56-00	PNEX-021048	F	1	
497	•••PROBE ASSEMBLY LARGE PORT 5/16-24 TAP	ASSY-024825	D	1	
499	••••PROBE STEM LARGE PORT 5/16-24	MECH-010112	C	1	
501	••••PROBE RETAINER WASHER	MECH-010695	D	1	
503	••••RING, RETAINING - INTERNAL INVERTED 3/4", ROTORCLIP HOI-75	MECX-017912	D	1	
505	•••PROBE ASSY LARGE PORT FOR 431417	ASSY-025036	C	1	
507	••••PROBE SEAL HOLDER TILTING FOR 431417	MECH-010697	B	1	
509	••••SEAL SIL RUB 2-1/4OD 40 DURO 5/16THK	SEAL-010182	C	1	
511	••••O-RING QUAD 0.57ODX0.36IDX.103 31957954 O-RING,QUAD,110	PNEX-021408	C	1	
513	••FP 2-4 BOTTLE SENSOR ASSEMBLY	ASSY-025643	A	2	
515	•••FP 2-4 SENSOR SLIDE MOUNT	MACH-027830	A	1	
517	•••FP 2-4 SENSOR SLIDE BASE	MACH-026200	A	1	
519	•••SCREW, SHCS, M6 X 20 LG, SS	HDWX-013030	A	4	
521	•••Sensor, Laser, 25 - 300mm range clear only, BANNER Q4XTBCOD300-Q8	ELEC-012240	A	1	
523	••••ABPFA301	-	A	9	
525	•••Clamp, Handle, M6 X 30 LG, Yellow, MCMaster 5101K653	MECH-033349	A	2	

FLEX PITCH 4-HEAD 10"-PITCH LRG FR ASSY

ITEM	DESCRIPTION	PART NO.	REV	QTY	INFO
527	••••Clamp, Handle, M6 X 30 LG, Yellow, MCMaster 5101K653	MECH-033349	A	1	
529	••••ABPFA301	-	A	1	
531	•••Cable, 5 pin micro to leads, right angle, MQDC1-515RA	ELEC-033880	-	1	
533	•••FP2.1 VERTICAL SCALE MOUNT	MACH-039047	A	1	
535	•FP 2-4 SELF TEST ORIFICES ASSEMBLY	ASSY-024401	A	1	
537	••FP 2-4 SELF TEST ORIFICE MOUNT	MACH-026267	A	1	
539	••Fitting, Bulkhead, #10-32, Brass, CLIPPARD 15027	PNEX-020960	A	4	
541	••ORIFICE, FIXED, .007, #10-32, OKEEFE Q-7-BR	PNEU-035199	A	4	
543	••SCREW, SHCS, M6 X 12 LG, SS	HDWX-014082	E	2	
545	•FP2.1 PROBE TOOLING - 2" STROKE	ASSY-038211	A	4	
547	••FP2.1 PROBE MOUNT	MACH-038222	C	1	
549	••FP 2-4 PROBE ARM STOP	MACH-026197	A	1	
551	••FLEX PITCH 2-4 PROBE SLIDE BLOCK	MACH-026198	A	1	
553	••LM LINEAR GUIDE BLOCK C1 LIGHT PRELOAD, THK SHS15C1SSC1	MECH-033323	A	2	
555	••TIMING BELT CLAMP (ALTER)	MECH-010107	A	1	
557	••SCREW, FHCS, M5 X 16 LG, SS	HDWX-013351	A	4	
559	••SCREW, SHCS, M6 X 16 LG, SS	HDWX-006953	A	2	
561		HDWX-006727	-	1	
563	••FP 2-4 PROBE SIDE STOP, 2.00 INCH LONG	MACH-035039	A	1	
565	•••SCREW, SET, SOC, M6 X 25 LG, BO	HDWX-013780	-	1	
567	••FP CYL ASSY, 1-1/16 X 1, W/ TRANSDUCER	ASSY-023451	A	1	
569	•••CYLINDER, SINGLE ACTING, BUMPER, MAGNETIC, 1.06 BORE X 1 STROKE, AMER 1062SNS-1.00-4-32	PNEU-010421	E	1	
571	•••NUT, HEX, JAM, 5/8-18, PL	HDWX-013080	C	1	
573	•••NUT, HEX, JAM, 5/16-24, PL	HDWX-013078	C	1	
575	•••FITTING, UNION, 1/4 TUBE, LEGRIS 3106-56-00	PNEX-021048	F	1	
577	••PROBE ASSEMBLY LARGE PORT 5/16-24 TAP	ASSY-024825	D	1	
579	•••PROBE STEM LARGE PORT 5/16-24	MECH-010112	C	1	
581	•••PROBE RETAINER WASHER	MECH-010695	D	1	
583	•••RING, RETAINING - INTERNAL INVERTED 3/4", ROTORCLIP HOI-75	MECX-017912	D	1	
585	••PROBE ASSY LARGE PORT FOR 431417	ASSY-025036	C	1	
587	•••PROBE SEAL HOLDER TILTING FOR 431417	MECH-010697	B	1	
589	•••SEAL SIL RUB 2-1/4OD 40 DURO 5/16THK	SEAL-010182	C	1	

FLEX PITCH 4-HEAD 10"-PITCH LRG FR ASSY

ITEM	DESCRIPTION	PART NO.	REV	QTY	INFO
591	•••O-RING QUAD 0.57ODX0.36IDX. 103 31957954 O-RING,QUAD,110	PNEX-021408	C	1	
593	•FLEX PITCH 2-4.10 LEG ASSY - RANGE 36"-41"	ASSY-024248	A	2	
595	••LEG ASSY WELDMENT	MECH-031763	A	1	
597	•••LEG BRACE A	MECH-031763-A	A	1	
599	•••BRACE PLATE B	MECH-031763-B	A	2	
601	•••GUSSET D	MECH-031763-D	A	4	
603	••LEVELER, ARTICULATING, 1-1/4"-7 THREADED, REXNORD 10309408	MECH-035125	A	2	
605	••CASTER, SWIVEL, ESD, 4 X 1-1/4, APEX CCAPEX-ESD-425S- TL	MECH-015081	A	2	
607	••NUT, HEX, 1-1/4-7, STL	HDWX-033405		4	
609		HDWX-035172		8	
611	•FP 2-4 PROBE SIDE STOP, 2.00 INCH LONG	MACH-035039	A	3	
613	••SCREW, SET, SOC, M6 X 25 LG, BO	HDWX-013780	-	1	
615	•FP 2-4.10 Cable Carrier A	ASSY-036484	A	1	
617	••Echain, IGUS 1400-025-048-0, EA=FEET	MECH-015424	A	24	
619	••Separator, IGUS 14011, 20 Per Unit Installed 1 Every Other Link	MECH-017232	A	12	
621	••FP2.1 CAT TRACK MOUNT A	MACH-038213	A	1	
623	••SCREW, FHCS, M6 X 12 LG, SS	HDWX-013353	A	4	
625	•FP 2-4.10 Cable Carrier B	ASSY-036485	A	1	
627	••Echain, IGUS 1400-025-048-0, EA=FEET	MECH-015424	A	30	
629	••Separator, IGUS 14011, 20 Per Unit Installed 1 Every Other Link	MECH-017232	A	15	
631	••FP2.1 CAT TRACK MOUNT B	MACH-038215	A	1	
633	••SCREW, FHCS, M6 X 12 LG, SS	HDWX-013353	A	4	
635	•FP 2-4.10 Cable Carrier C	ASSY-036486	A	1	
637	••Echain, IGUS 1400-025-048-0, EA=FEET	MECH-015424	A	37	
639	••Separator, IGUS 14011, 20 Per Unit Installed 1 Every Other Link	MECH-017232	A	19	
641	••FP2.1 CAT TRACK MOUNT C	MACH-038220	A	1	
643	••SCREW, FHCS, M6 X 12 LG, SS	HDWX-013353	A	4	
645	•FP 2-4.10 Cable Carrier D	ASSY-036487	A	1	
647	••Echain, IGUS 1400-025-048-0, EA=FEET	MECH-015424	A	44	
649	••Separator, IGUS 14011, 20 Per Unit Installed 1 Every Other Link	MECH-017232	A	22	
651	••FP2.1 CAT TRACK MOUNT D	MACH-038221	A	1	
653	••SCREW, FHCS, M6 X 12 LG, SS	HDWX-013353	A	4	
655	•FP SERVO DRIVE ASSY	ASSY-038223	A	4	
657	••OMRON SERVO MOTOR MOUNT	MACH-038229	A	1	
659	••COUPLER,RULAND,MJCC-16-A,ALU M HUB 16mm w/5mm KEYWAY	MECH-038254	A	2	

FLEX PITCH 4-HEAD 10"-PITCH LRG FR ASSY

ITEM	DESCRIPTION	PART NO.	REV	QTY	INFO
661	••MOTOR, OMRON R88M-1M40030T-S 2, SERVO, AC, 400WATT, 200VAC, WITH ENCODER	ELEC-038057	A	1	
663	••GEARBOX, APEX DYNAMICS #PEII070-007 / OMRON R88M-1M40030T PLANETARY GEARBOX, 7:1 RATIO	MECH-039551	A	1	
665	••SCREW, SHCS, M8 X 25 LG, SS	HDWX-006739	A	2	
667	••SCREW, SHCS, M5 X 25 LG, SS	HDWX-014077	A	4	
669	••CIRCUIT BREAKER, 3-PHASE, 6 AMPS, CLASS-D, UL489, LSIS, BK63HU 3P D6 10KA 480/277 UL489	ELEC-036009	A	1	
671	••DRIVE, OMRON R88D-1SN04H-ECT , AC SERVO DRIVES 400 WATT 200VAC SINGLE/3 PHASE WITH ETHERCAT	ELEC-038056	A	1	
673	•FP2.1 MANUAL LIFT SHAFT ASSY	ASSY-038191	B	1	
675	••RS 2-4 LIFT CRANK HANDLE SHAFT	MACH-034310	B	1	
677	••124mm hand wheel w/ folding handle mod.	MACH-034910	B	1	
679	••ABPFA301	-	A	2	
681	••PIN, SLOTTED SPRING, 1/8" X 1-1/4" LG, SS	MECX-017897	B	1	
683	••PIN, DOWEL, 1/8 DIA X 1/4 LG, SS	MECX-017895	B	2	
685	••PLUNGER, BALL-NOSE (NYLON), LCK ELEMENT, M5X0.8, STL	MECH-035170	B	1	
687	••FP2.1 HAND CRANK GUIDE BLOCK	MACH-038233	B	1	
689	••SCREW, SHCS, M4 X 20 LG, SS	HDWX-014062	D	4	
691	•TOP ASSY TIMING BELT MOUNT (LG FRAME)	ASSY-040170	A	1	
693	••FP 2-4 10-PITCH UPPER TOOLING PLATE	MACH-027819	A	1	
695	••FP 2-4 HEX POST	MACH-028910	A	4	
697	••FP 2-4 TENSION SCREW MOUNT	MACH-027244	B	4	
699	••FP 2-4 10-PITCH UPPER DUST COVER	MACH-034955	-	1	
701	••SCREW, HEX, M8 X 50 LG, PL	HDWX-013028	-	4	
703		HDWX-006727	-	8	
705	••SCREW, SHCS, M8 X 25 LG, SS	HDWX-006739	A	13	
707	••NUT, HEX, JAM, M8, PL	HDWX-033404	-	4	
709	••SPACER,0.25" CLEARANCE,SC-LI NEAR	MECX-017985	-	10	
711	••SMC MAIFOLD ASSEMBLY	PNEU-038835	A	1	
713	••SCREW, FHCS, M6 X 12 LG, SS	HDWX-013353	A	11	
715	•FP STD REAR GUARD PANELS - LRG ASSY	ASSY-039277	A	1	
717	••SCREW, BHCS, M8 X 16 LG, SS	HDWX-013251	J	30	
719	••WASHER, FENDER, M8, SS	HDWX-014248	B	10	
721	••FP 10-PITCH LOWER BACK PANEL	MACH-040207	A	2	
723	••FP 10-PITCH LOWER BACK MID PANEL	MACH-040208	A	1	
725	••FP 10-PITCH UPPER BACK PANEL	MACH-040209	A	2	
727	•FP2.1 TUNNEL GUARDS 22"	ASSY-025875	B	1	

FLEX PITCH 4-HEAD 10"-PITCH LRG FR ASSY

ITEM	DESCRIPTION	PART NO.	REV	QTY	INFO
729	••WASHER, STD, M8, SS	HDWX-009485	H	8	
731	••SCREW, BHCS, M8 X 16 LG, SS	HDWX-013251	J	8	
733	••NUT, T-NUT, SINGLE DROP-IN, M8, 80/20 40-1986	MECX-015584	B	8	
735	•Wireway For Main Enclosure, Flex Pitch 2-4.10	ASSY-035996	-	1	
737	••Conduit Profile U 60x60 SE, natural, ITEM 0.0.487.37	ELEC-035997	-	2	
739	••Lid Profile D60 E, natural, ITEM 0.0.451.43	ELEC-035998	-	2	
741	•FP XL PITCH LEG ASSEMBLY 49"-61" RANGE	ASSY-040257	-	2	
743	••FP 6-PITCH LEG WELDMENT 36"-61" RANGE	MACH-040260	-	1	
745	•••LEG BRACE A	MECH-031763-A	A	1	
747	•••BRACE PLATE B	MECH-031763-B	A	2	
749	•••GUSSET D	MECH-031763-D	A	4	
751	••LEVELER, ARTICULATING, 1-1/4"-7 THREADED, REXNORD 10309408	MECH-035125	A	2	
753	••CASTER, SWIVEL, ESD, 4 X 1-1/4, APEX CCAPEX-ESD-425S- TL	MECH-015081	A	2	
755	••NUT, HEX, 1-1/4-7, STL	HDWX-033405		4	
757		HDWX-035172		8	
1000		HDWX-014090-9			
1001		MECH-040295-1			
1002		HDWX-013366-4			
1005		HDWX-014090-8			
1006		MACH-038874-2			