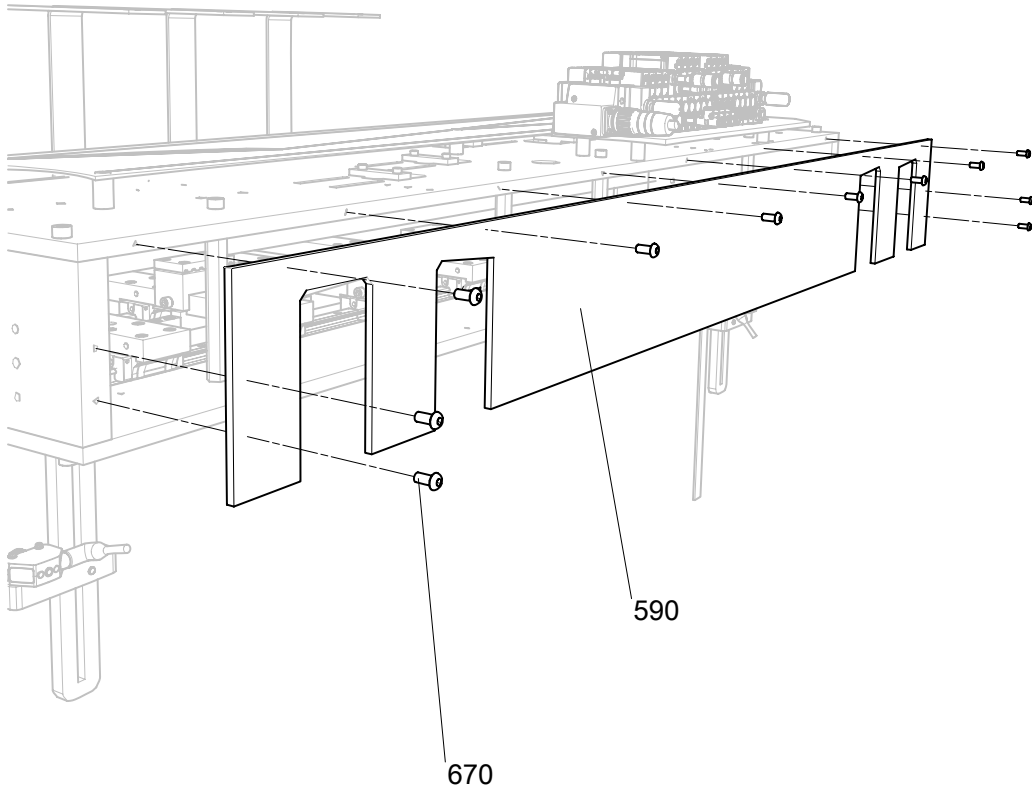
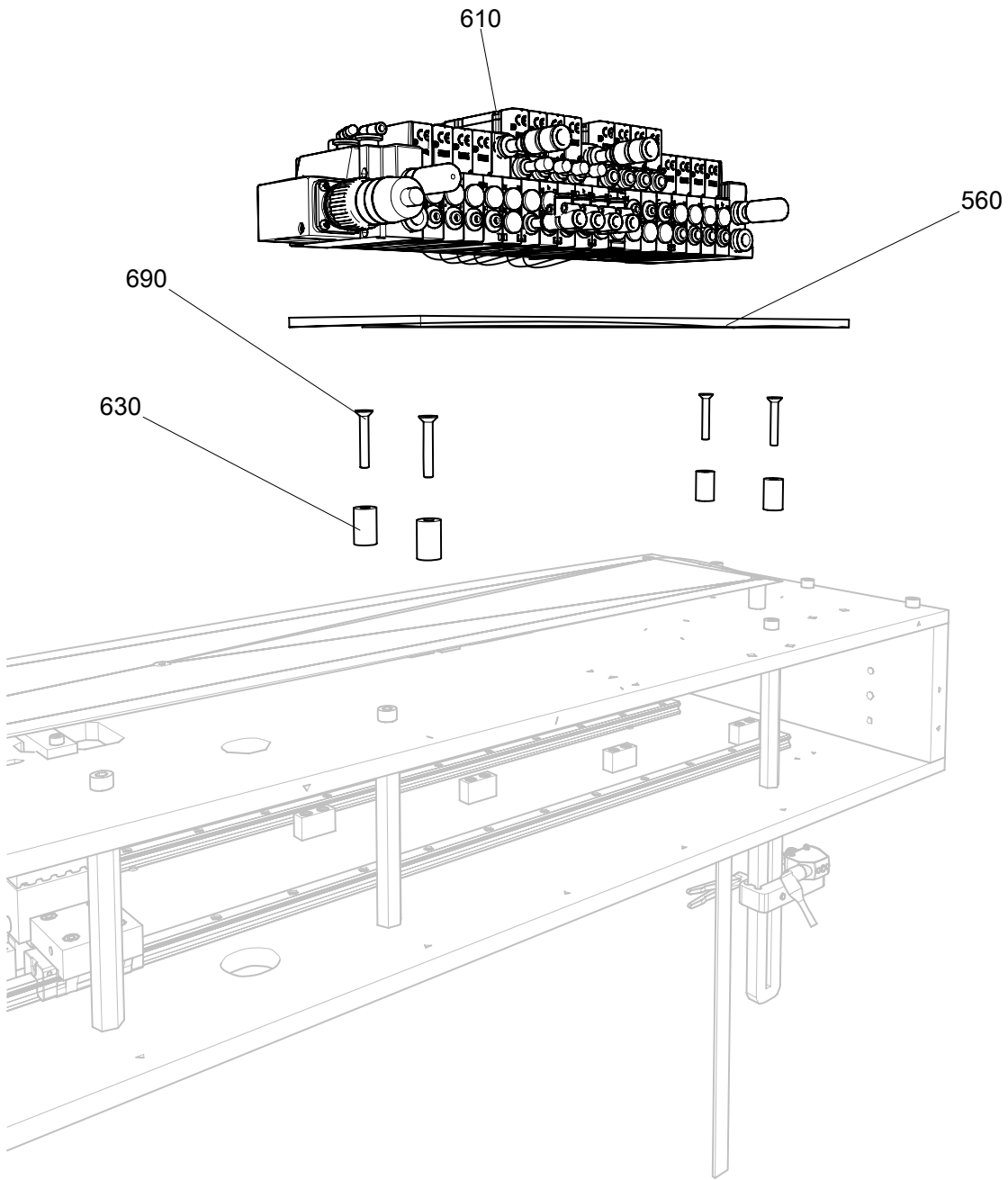


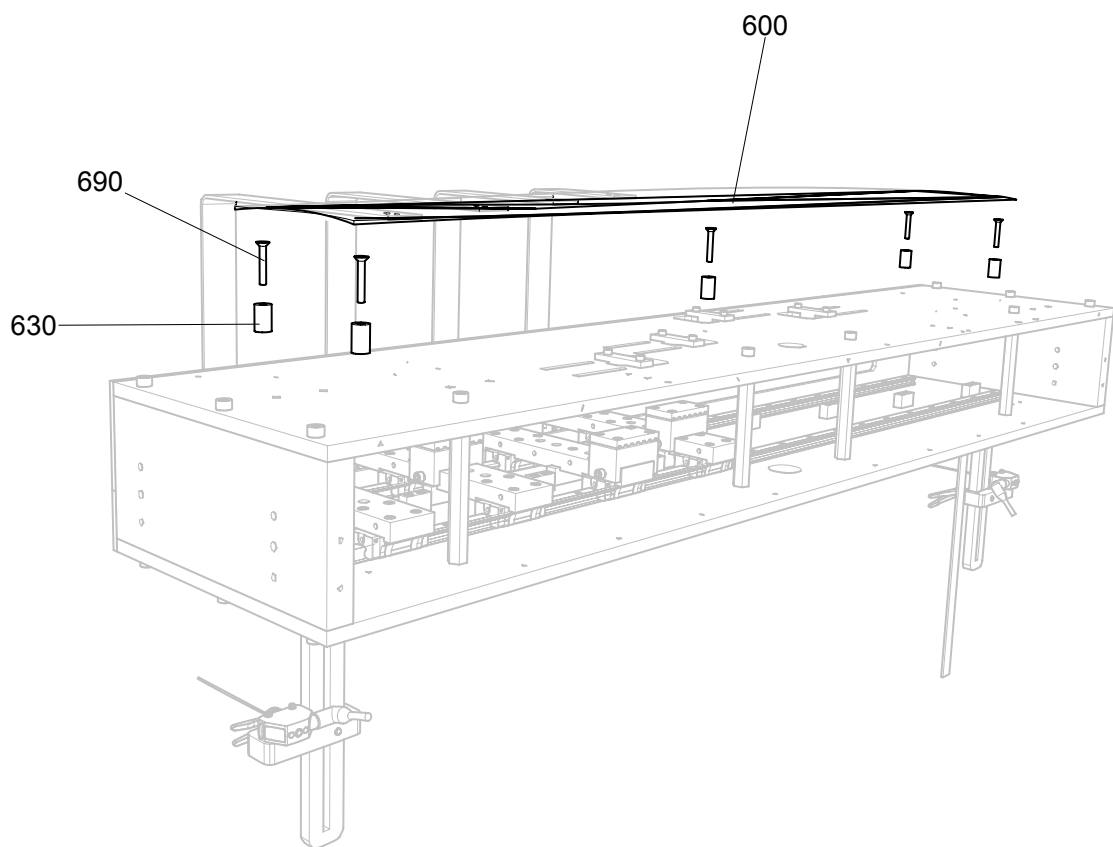
Overall



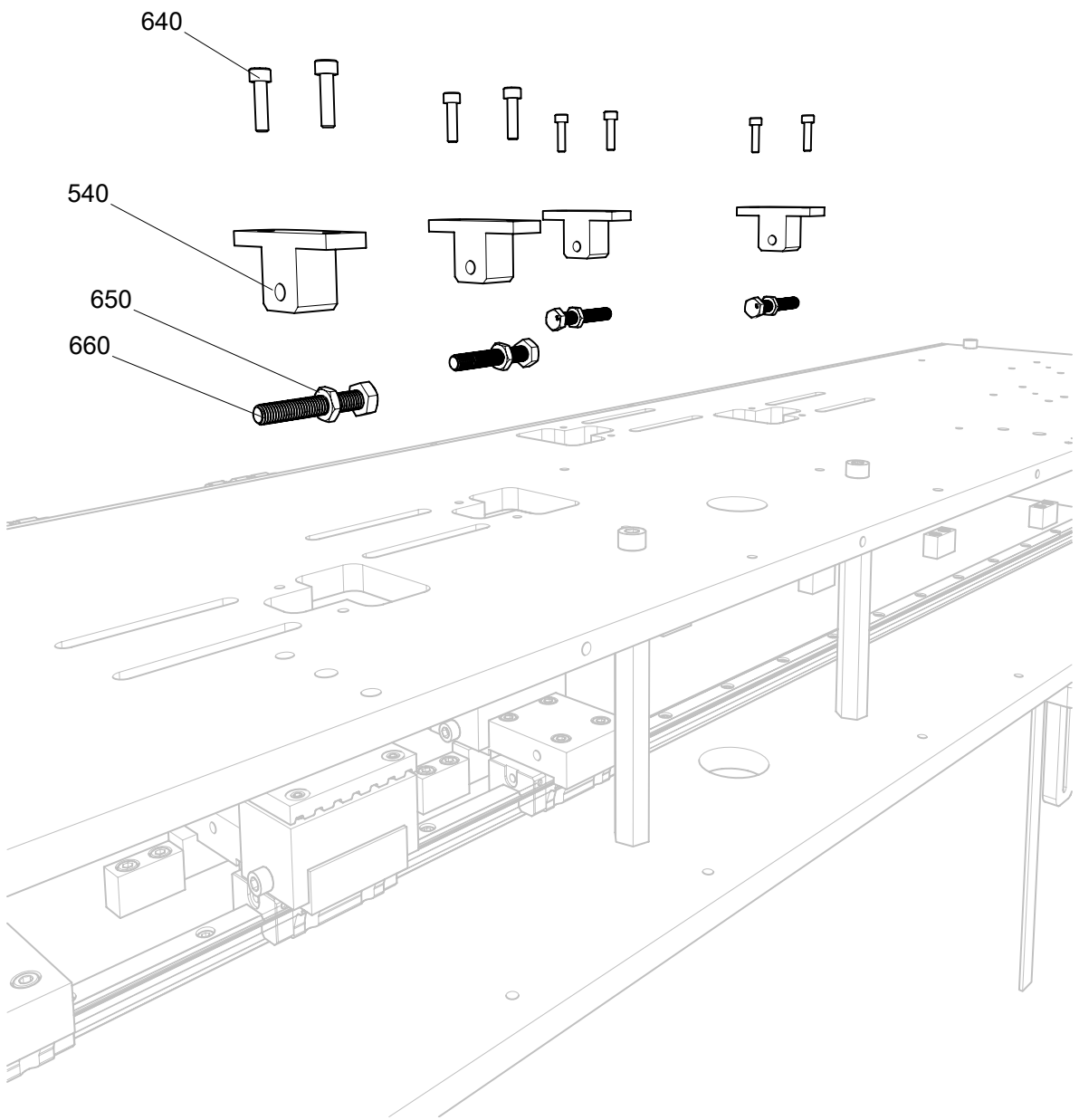
Rear Tooling Cover



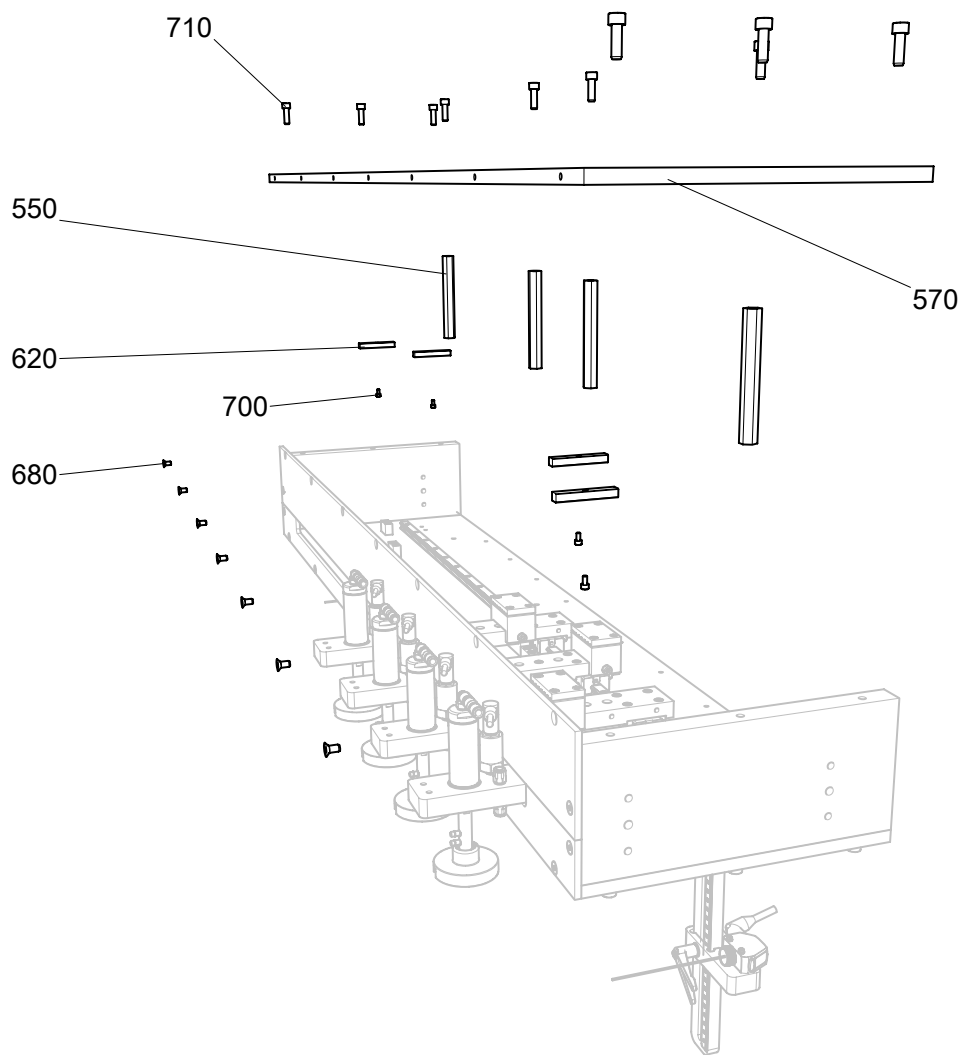
Pneumatic Controls



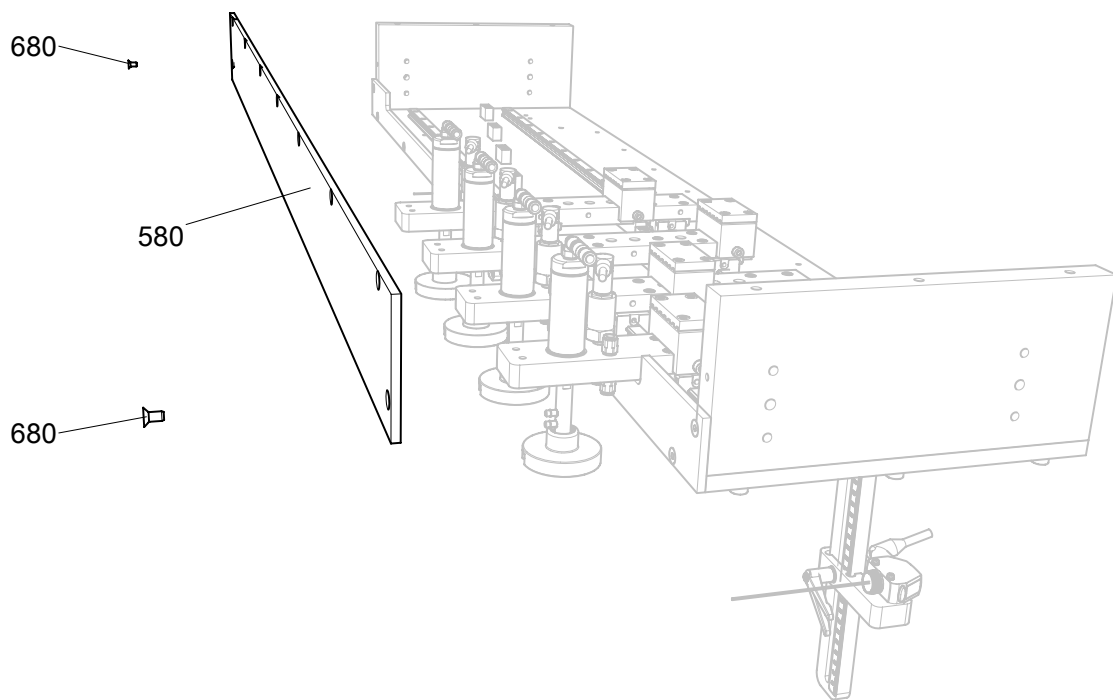
Slide Carrier Plate



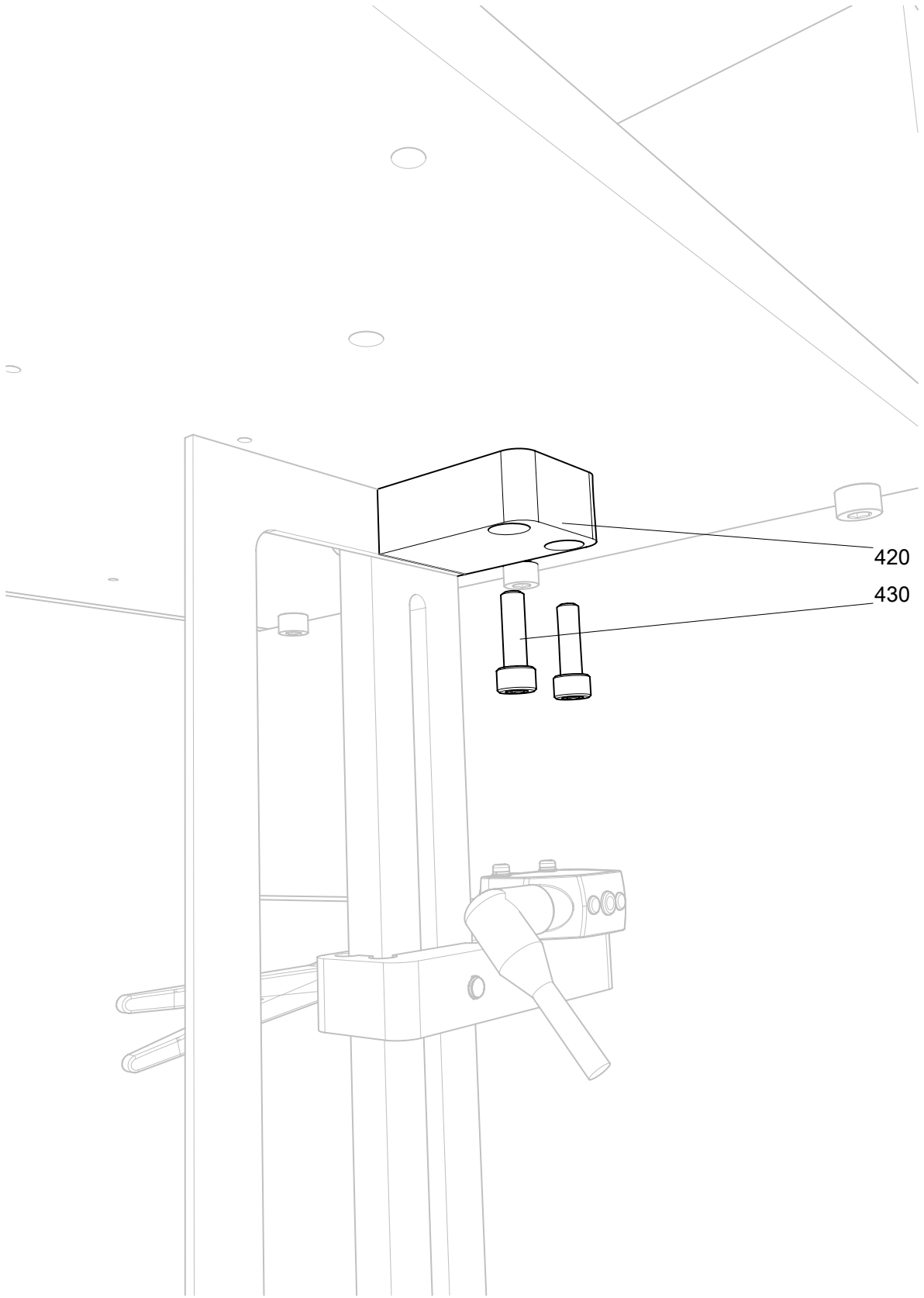
Tension Screw Mounts



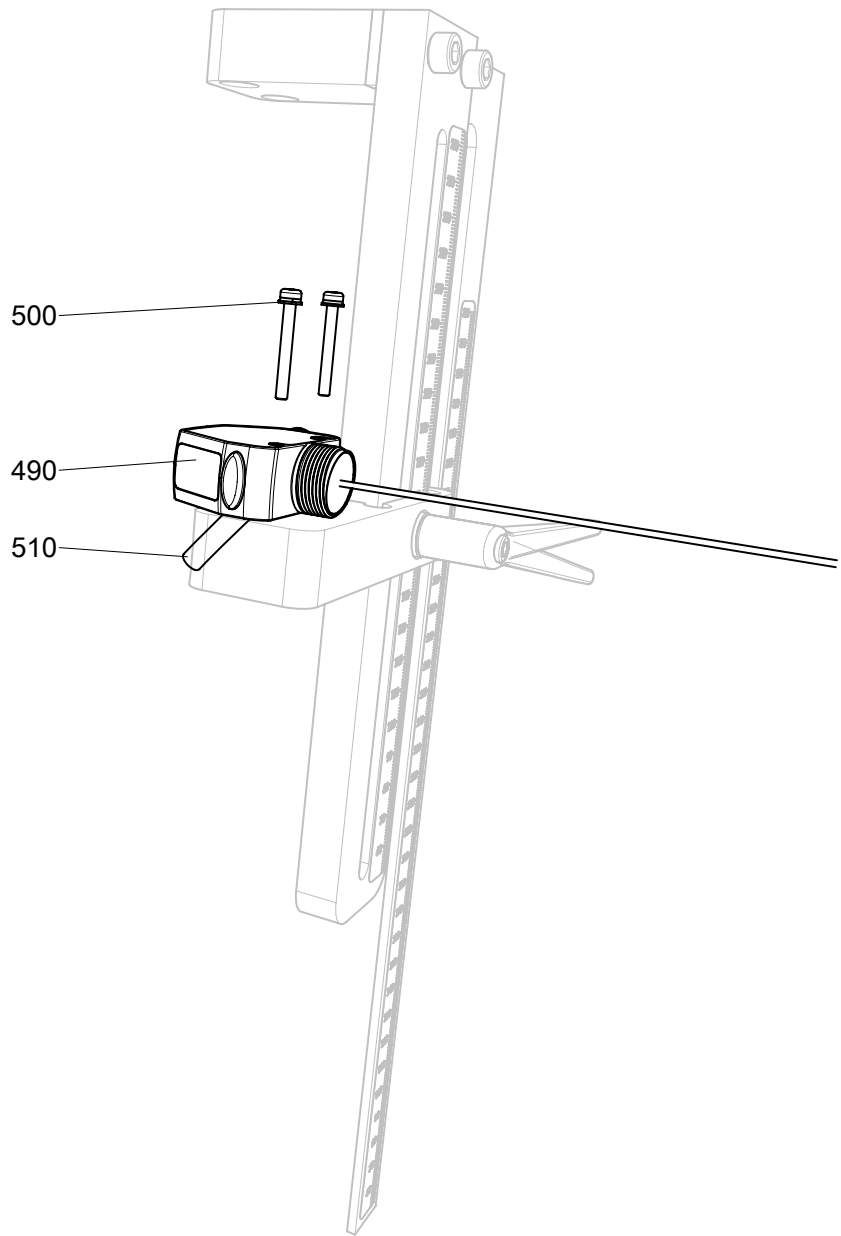
Timint Belt Mounting Plate



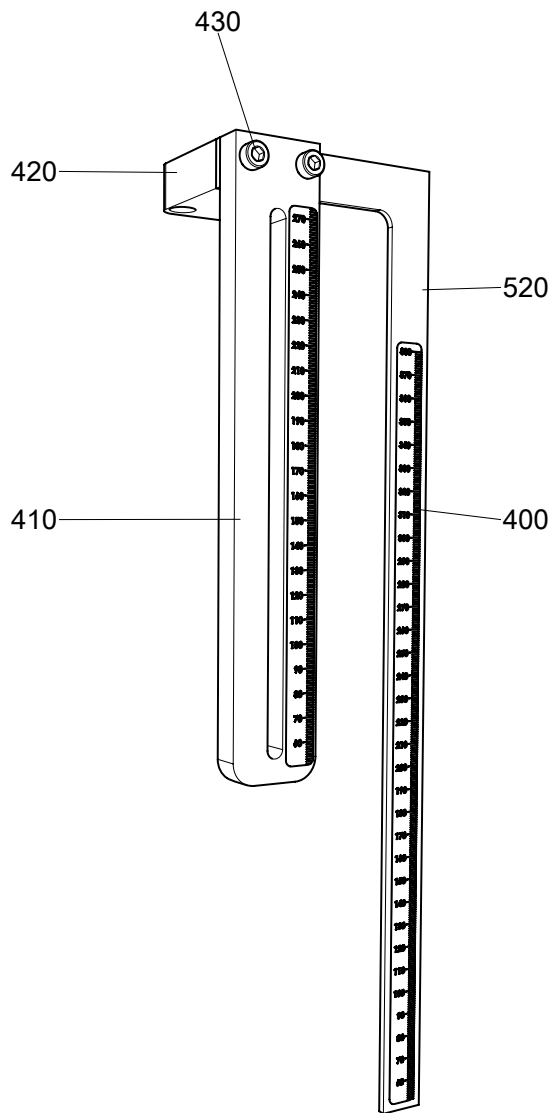
Upper Front Cover



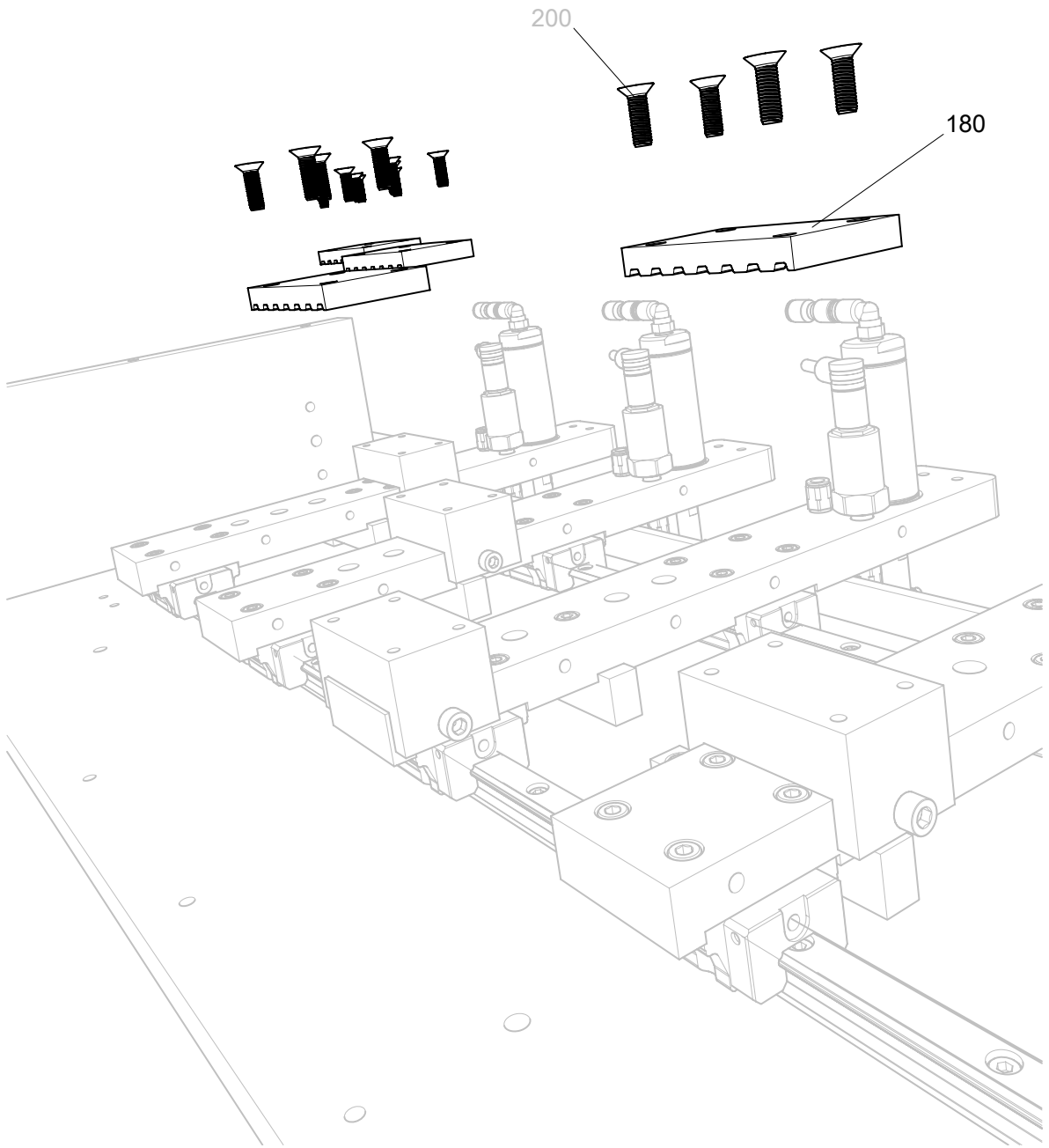
Sensor Mount Assembly



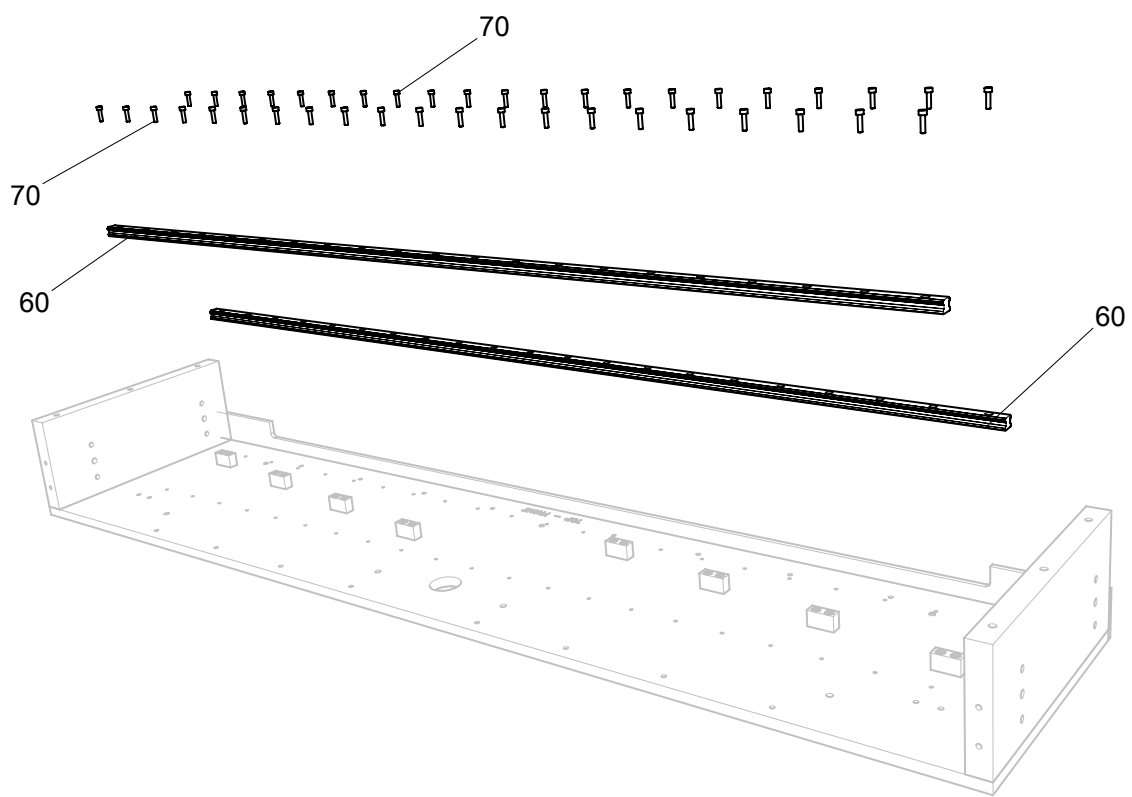
Sensor



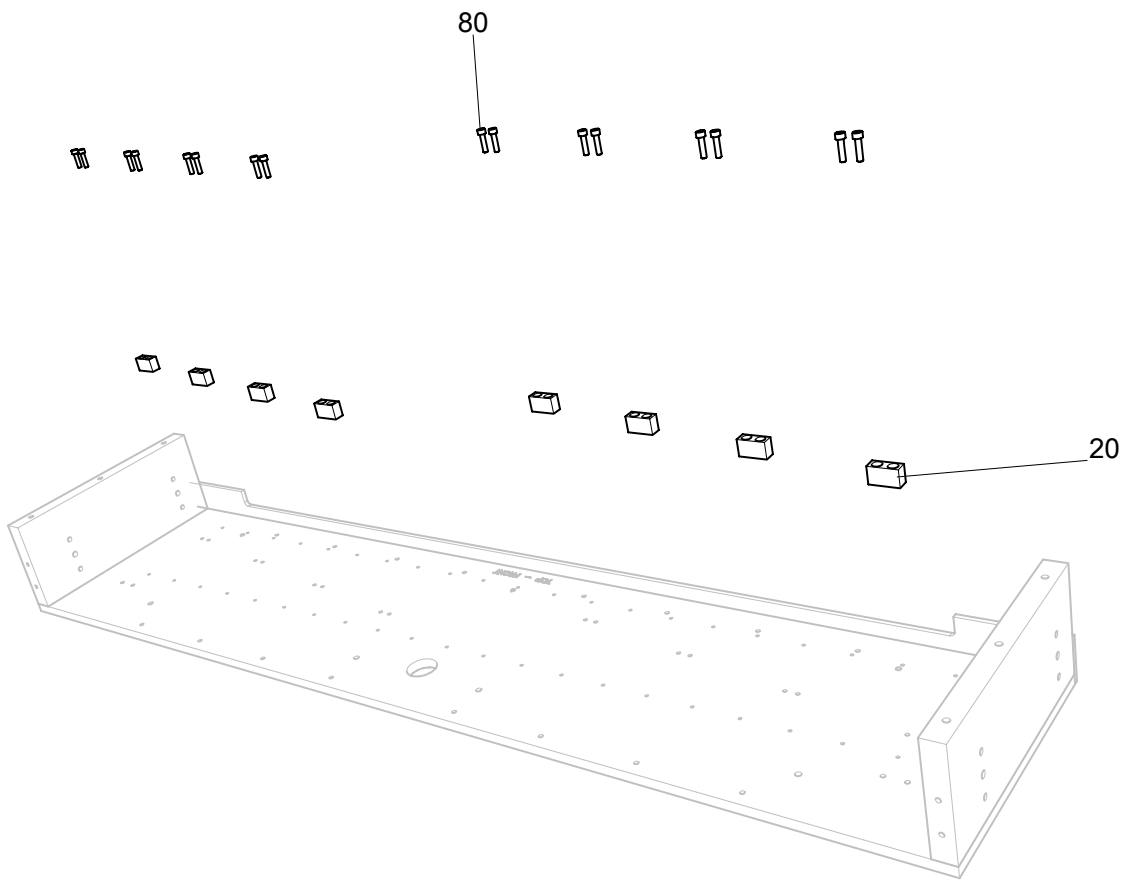
Slide Mount



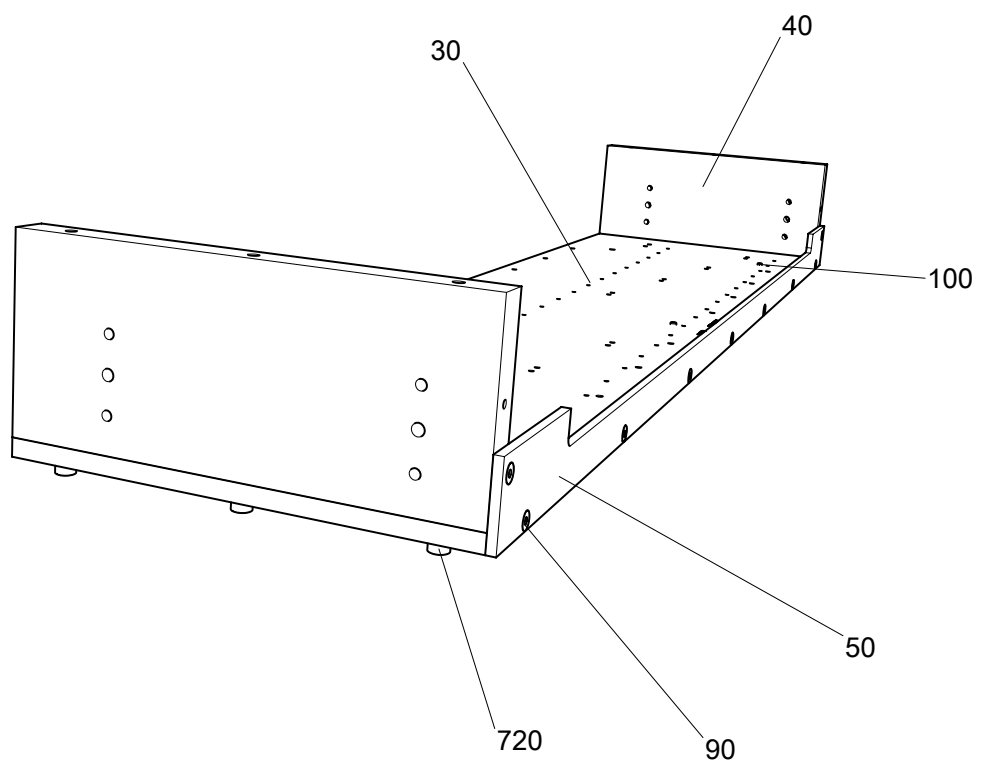
Timing Belt Clamp



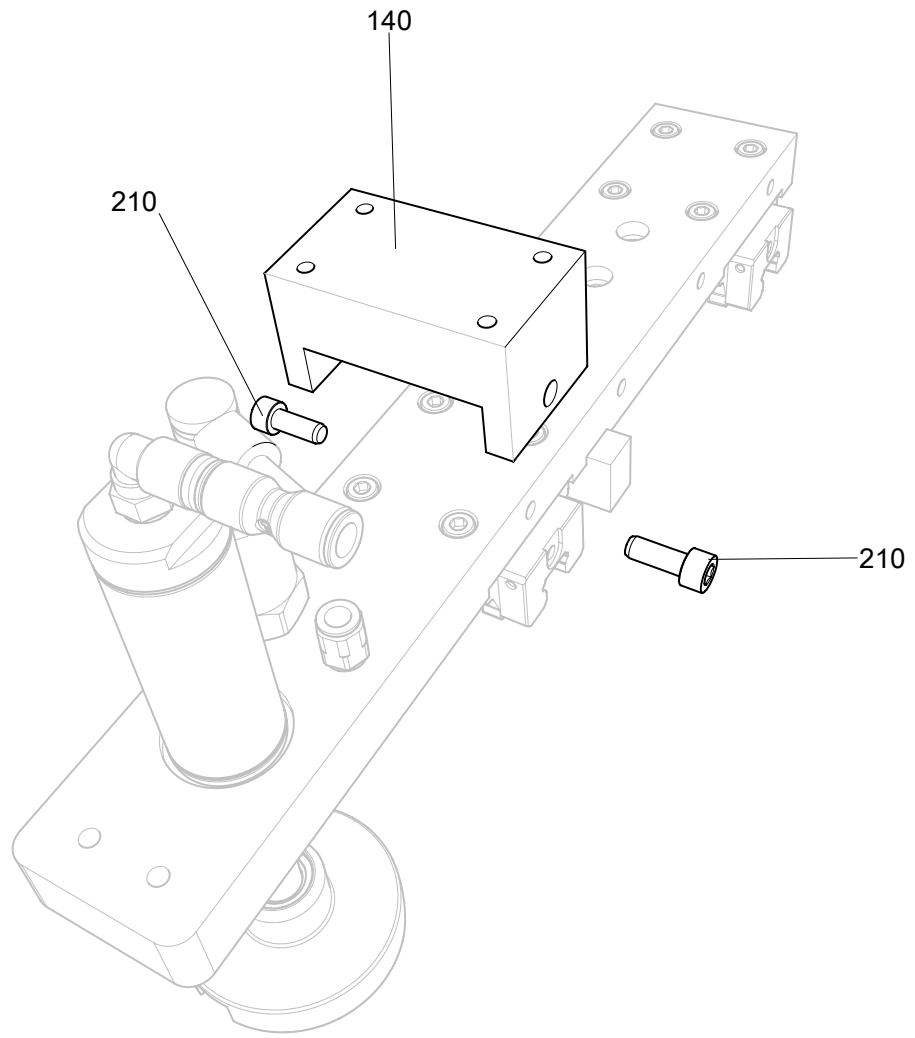
Rails



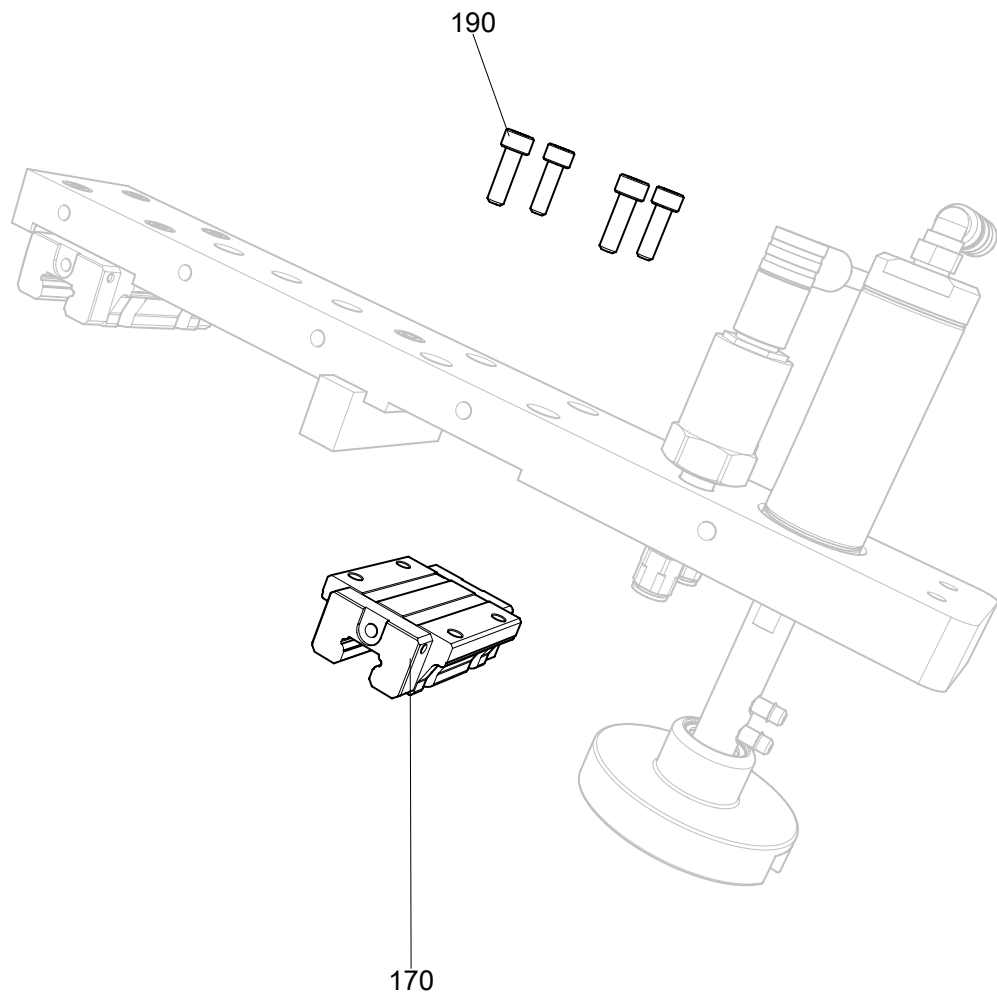
Rail Mounts



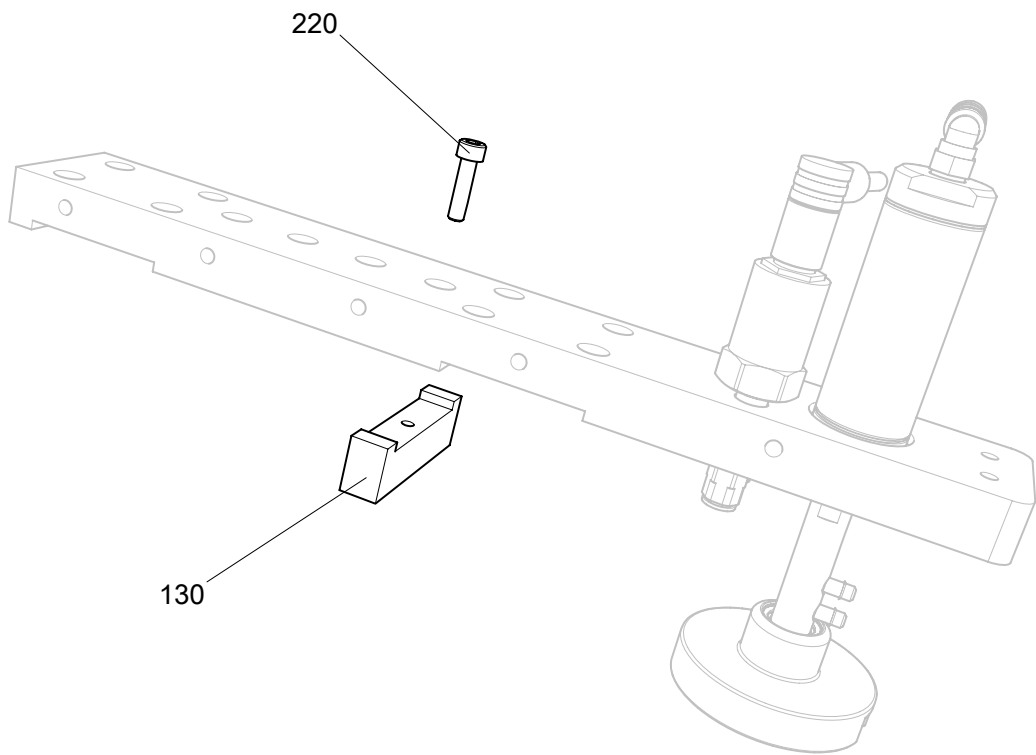
Bottom Slide Plate



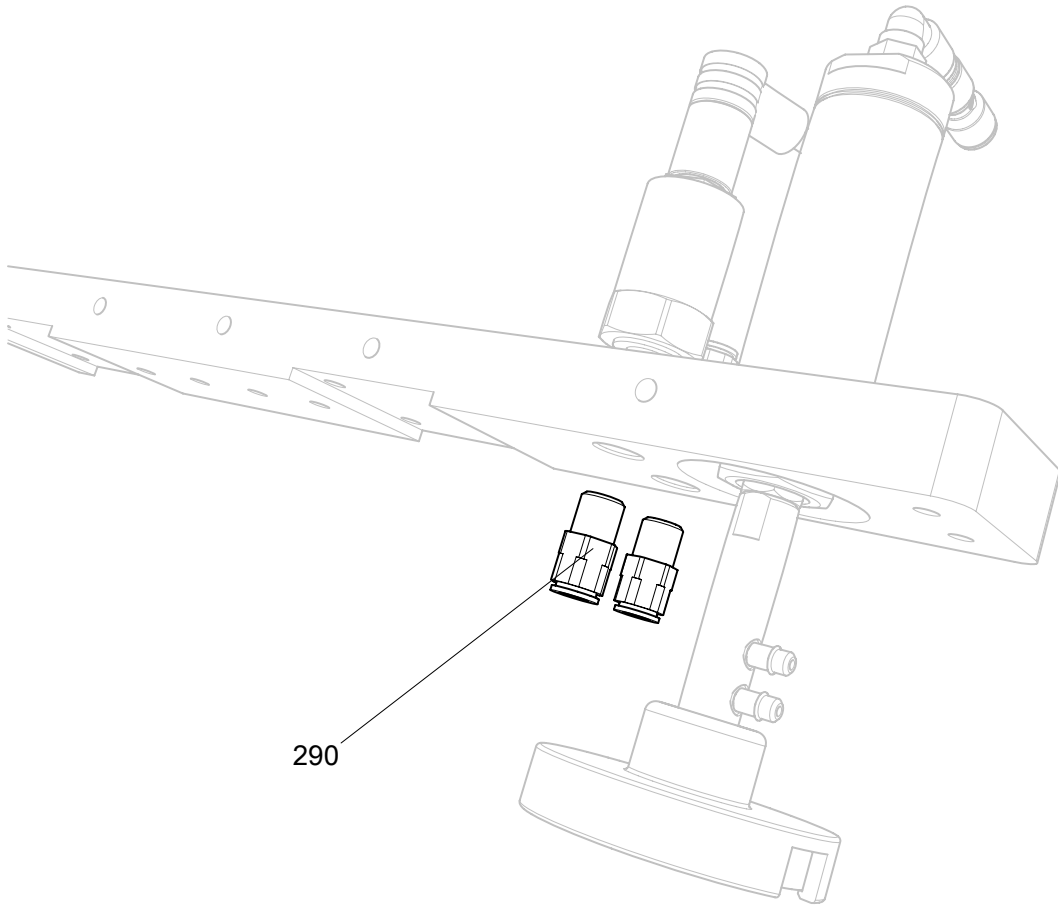
Probe Side Block



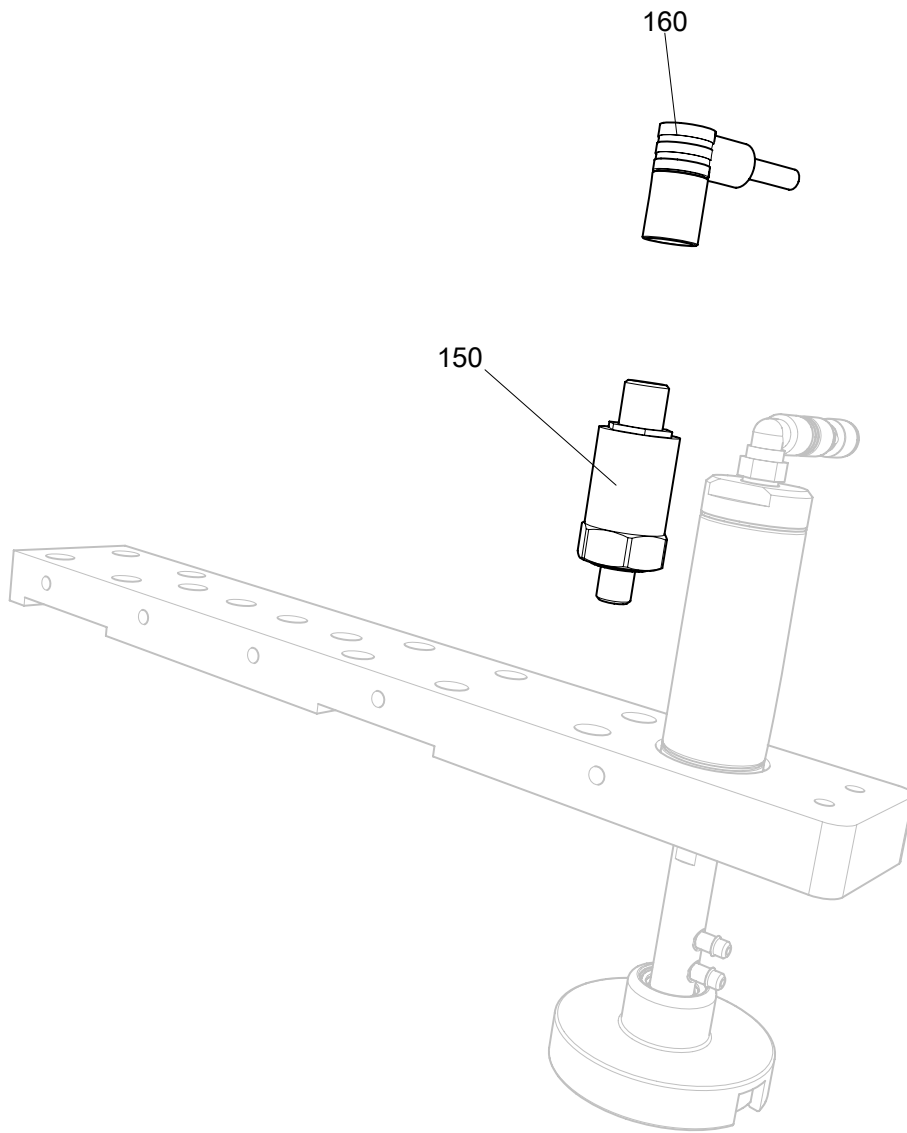
Linear Guide Block



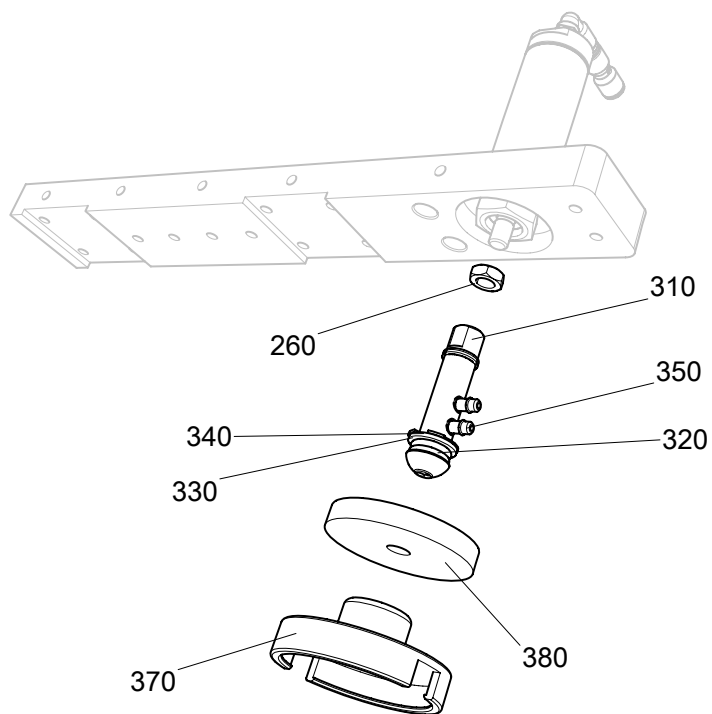
Probe Arm Stop



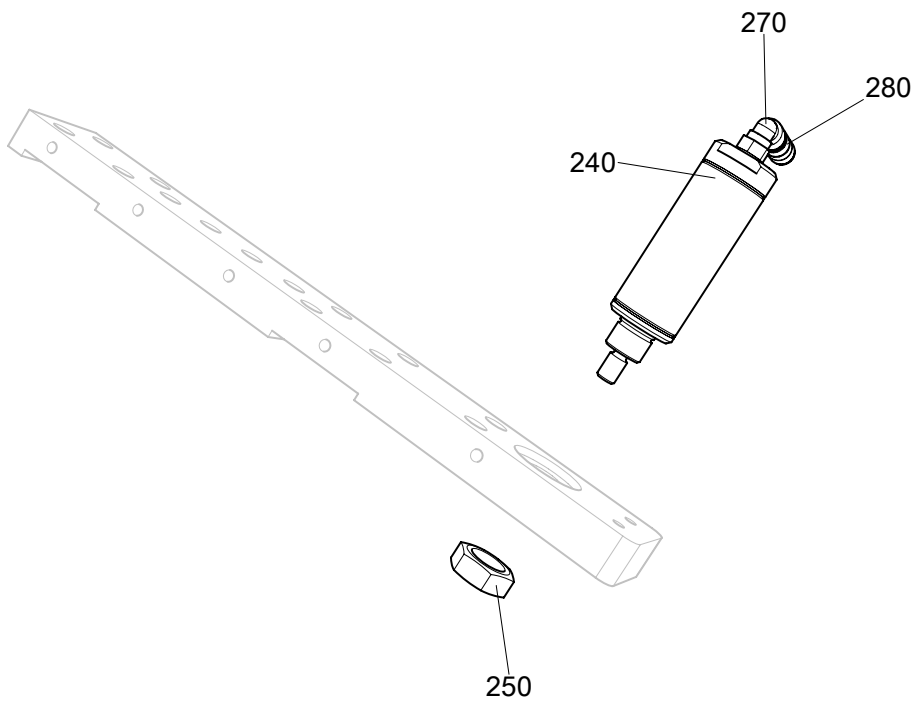
Air Fittings



Pressure Transducer



Probe Seal



Single Acting Cylinder

ITEM	DESCRIPTION	PART NO.	REV	QTY	INFO
10	FP2.1 TOOLING SLIDE ASSY	ASSY-038207	-	1	
20	•SLIDE HOME STOP BLOCK	MACH-038206	A	8	
30	•FP2.1 BOTTOM SLIDE PLATE	MACH-038208	-	1	
40	•FP2.1 SLIDE ASSY END SUPPORTS	MACH-038209	A	2	
50	•FP2.1 LOWER FRONT COVER	MACH-038210	-	1	
60	•RAIL,THK,SHS15-1240L	MECH-017195	-	2	
70		HDWX-006723	A	42	
80		HDWX-006727	-	16	
90	•SCREW, FHCS, M6 X 12 LG, SS	HDWX-013353	A	9	
100	•PIN, DOWEL, M6 X 12 LG, STL	MECX-017896	-	3	
110	•FP2.1 PROBE TOOLING - 2" STROKE	ASSY-038211	A	4	
120	••FP2.1 PROBE MOUNT	MACH-038222	C	1	
130	••FP 2-4 PROBE ARM STOP	MACH-026197	A	1	
140	••FLEX PITCH 2-4 PROBE SLIDE BLOCK	MACH-026198	A	1	
150	••TRANSDUCER, PRESSURE, 0-1 PSI, 4-20MA, 1/8NPT, TDL45BG000101Q005	ELEC-010903	A	1	
160	••CABLE, M12 4 PIN, 12M LG, TRANS D TDM124F69CR12M	ELEC-010358	A	1	
170	••LM LINEAR GUIDE BLOCK C1 LIGHT PRELOAD, THK SHS15C1SSC1	MECH-033323	A	2	
180	••TIMING BELT CLAMP (ALTER)	MECH-010107	A	1	
190	••SCREW, SHCS, M5 X 16 LG, SS	HDWX-014075	A	8	
200	••SCREW, FHCS, M5 X 16 LG, SS	HDWX-013351	A	4	
210	••SCREW, SHCS, M6 X 16 LG, SS	HDWX-006953	A	2	
220		HDWX-006727	-	1	
230	••FP CYL ASSY, 1-1/16 X 1, W/ TRANSDUCER	ASSY-023451	A	1	
240	•••CYLINDER, SINGLE ACTING, BUMPER, MAGNETIC, 1.06 BORE X 1 STROKE, AMER 1062SNS-1.00-4-32	PNEU-010421	E	1	
250	•••NUT, HEX, JAM, 5/8-18, PL	HDWX-013080	C	1	
260	•••NUT, HEX, JAM, 5/16-24, PL	HDWX-013078	C	1	
270	•••00764 FIT TUB ELB MAL .2500TUBE	PNEU-001011	E	1	
280	•••FITTING, UNION, 1/4 TUBE, LEGRIS 3106-56-00	PNEX-021048	F	1	
290	••FITTING, STRAIGHT, .250 TUBE TO 1/8 NPT, LEGRIS 3175-56-11	PNEU-001032	B	3	
300	••PROBE ASSEMBLY LARGE PORT 5/16-24 TAP	ASSY-024825	D	1	
310	•••PROBE STEM LARGE PORT 5/16-24	MECH-010112	C	1	
320	•••O-RING PARKER 2-111N674-70	SEAX-033314	D	2	
330	•••PROBE RETAINER WASHER	MECH-010695	D	1	
340	•••RING, RETAINING - INTERNAL INVERTED 3/4", ROTORCLIP HOI-75	MECX-017912	D	1	
350	•••FITTING, BARB, 10-32, FABCO 3214-1	PNEX-007527	D	2	

ITEM	DESCRIPTION	PART NO.	REV	QTY	INFO
360	••PROBE ASSY LARGE PORT FOR 431417	ASSY-025036	C	1	
370	•••PROBE SEAL HOLDER TILTING FOR 431417	MECH-010697	B	1	
380	•••SEAL SIL RUB 2-1/4OD 40 DURO 5/16THK	SEAL-010182	C	1	
390	•••O-RING QUAD 0.57ODX0.36IDX. 103 31957954 O-RING,QUAD,110	PNEX-021408	C	1	
400	•FP 2-4 BOTTLE SENSOR ASSEMBLY	ASSY-025643	A	2	
410	••FP 2-4 SENSOR SLIDE MOUNT	MACH-027830	A	1	
420	••FP 2-4 SENSOR SLIDE BASE	MACH-026200	A	1	
430	••SCREW, SHCS, M6 X 20 LG, SS	HDWX-013030	A	4	
440	••Clamp, Handle, M6 X 30 LG, Yellow, MCMaster 5101K653	MECH-033349	A	2	
450	•••Clamp, Handle, M6 X 30 LG, Yellow, MCMaster 5101K653	MECH-033349	A	1	
460	•••-	-	A	1	
470	••FP 2-4 SENSOR MOUNT	MACH-026201	A	1	
480	••Sensor, Laser, 25 - 300mm range clear only, BANNER Q4XTBCOD300-Q8	ELEC-012240	A	1	
490	•••-	-	A	10	
500	••BANNER M3 SCREW (SUPPLIED WITH SENSOR)	M3 SENSOR SCREW	-	2	
510	••Cable, 5 pin micro to leads, right angle, MQDC1-515RA	ELEC-033880	-	1	
520	••FP2.1 VERTICAL SCALE MOUNT	MACH-039047	A	0	
530	•TOP ASSY - TIMING BELT MOUNT	ASSY-038219	-	1	
540	••FP 2-4 TENSION SCREW MOUNT	MACH-027244	B	4	
550	••FP 2-4 HEX POST	MACH-028910	A	4	
560	••FP2.1 NEXGEN VALVE BANK MNT w/ CHAMFER	MACH-038224	B	1	
570	••FP2.1 TIMING BELT/DRIVE MOUNTING PLATE	MACH-038225	B	1	
580	••FP2.1 UPPER FRONT COVER	MACH-038226	-	1	
590	••FP2.1 REAR TOOLING COVER	MACH-038227	-	1	
600	••FP 2.1 SLIDE CABLE CARRIER PLATE	MACH-038228	-	1	
610	••SMC MAIFOLD ASSEMBLY	PNEU-038835	A	1	
620	••KEY, SQUARE WITH C'BORED HOLE, 10mm x 60mm LG, MISUMI KEDZ10-60	MACX-014552	C	4	
630	••SPACER,0.25" CLEARANCE,SC-LI NEAR	MECX-017985	-	9	
640		HDWX-006727	-	8	
650	••NUT, HEX, JAM, M8, SS	HDWX-006850	-	4	
660	••SCREW, HEX, M8 X 50 LG, PL	HDWX-013028	-	4	
670	••SCREW, BHCS, M6 X 14 LG, SS	HDWX-013241	A	11	
680	••SCREW, FHCS, M6 X 12 LG, SS	HDWX-013353	A	9	
690	••SCREW, FHCS, M6 X 40 LG, SS	HDWX-013359	A	9	
700		HDWX-014068	C	4	

ITEM	DESCRIPTION	PART NO.	REV	QTY	INFO
710	••SCREW, SHCS, M8 X 25 LG, SS	HDWX-006739	A	10	
720	•SCREW, SHCS, M8 X 25 LG, SS	HDWX-006739	A	6	